

**KAIKOURA DISTRICT COUNCIL WORKS AND SERVICES
COMMITTEE MEETING HELD AT 9.00AM ON WEDNESDAY 20
JULY 2005 IN THE MEMORIAL HALL SUPPER ROOM,
ESPLANADE, KAIKOURA.**

AGENDA

1. Apologies

2. Matters of Importance to be raised as Urgent Business.

3. Matters Arising from Report of 22/06/05

page 61

4. Minutes Action and Issues List Update

<i>MEETING</i>	<i>ACTION REQUIRED</i>	<i>BY</i>	<i>DATE ACTIONED</i>
	<i>18 AUGUST 2004</i>		
Works	Report on future of Gas Barbeques	Stuart/Ian	In Progress
	<i>16 MARCH 2005</i>		
Works	Check stormwater at individual houses	Martin	In Progress
Works	Subdivide walkway access at 20 Beach Road property	Stuart	In Progress
	<i>18 MAY 2005</i>		
Works	Moa Point Seawall report	Murray	In Progress
Works	Letter to Toll re Hapuku Railway Crossing	Murray	In Progress
Works	Meeting with local farmers re stock effluent	Murray	In Progress

5. Reports:

- **Works and Services Report** *page 1*
- **Roading Report** *page 5*
- **Works and Services Budget Report** *page 15*

6. Urgent Business

5. WORKS AND SERVICES REPORT

1.0 Introduction

On July 1, 2005 the management of all operation and maintenance contracts (Water, Sewer, Stormwater, Public Conveniences, and Parks and Reserves) was taken over by Gallo and Marlene. In addition to this all engineering issues relating to consent applications are now being processed in house, the numbers will be reported on by The Planning Department.

2.0 Water Supply

Urban Water

The water demand for June 2005 continued to decline averaging 2573m³/day, May 2005 averaged 2746m³/day. See graph attached showing the water demand trend from April 2004 to June 2005

On the 18th June, 2005 a burst pipe on the 200mm AC main supplying the reservoirs at the Southern End of Mt Fyffe Rd approx. 180m from centre line of Ludstone Rd intersection occurred and was immediately repaired. Apart from this incidence no major problems were encountered with the water supply system.

Leak Detection

Subsequent to the draft report that was submitted for leaks found within the reticulation system, Folton Hogan is now assigned to carryout the repairs. Works will start on the 25th July 2005 and is to be completed by the 5th August 2005.

Kincaid Water Supply

On the 28th June 2005 the presence of Ecoli in the water was reported in the test samples result. This was associated to the poor chlorination system in place. The contractor responded to issue and so far the system is okay.

Presently quotations have been received and are under review for the installation of a simple chlorination plant for the Kincaid water supply.

Metering of Commercial Properties

Council is presently in the process of having all commercial properties fitted with meters. Survey work to identify the location of the Toby boxes is underway. We anticipate some problems with the implementation as there are some properties sharing the same water lateral.

Capital Works

Watermain Renewals 2004/05

Works infrastructure is progressing smoothly on the replacement of pipelines.

Construction on the last section (Ludstone Road) is virtually complete.

The construction has run relatively smoothly, although there has been some minor delays and changes associated with inaccuracies with the base As-built plans (ie we had to change the point where the new pipe connects to the existing reticulation).

3.0 SEWER SYSTEM

Urban Reticulation

The sewage flow averaged 1361m³/day a normal trend in the winter period. See attached graph showing trend over the period.

Pump # 1 at Gillings Lane got faulty and was removed and replaced with a temporal pump, the pump was sent to Brown Brothers for repairs.

The measured Dissolved Oxygen continues to drop reaching levels (averaging 0.85mg/l) below the consented condition of 2mg/l and above as is shown in attached graph. When the new beds are commissioned this low DO level is expected to increase to acceptable limits.

The associated low DO may be as a result of septage dumping was observed on June 30th 2005. The dumping of septage resulted in a layer of FOG (Fats, oil and grease) on the surface of the pond which could have reduced dissolved oxygen concentration by natural aeration.

Apart from the above no major problems were encountered with the system

Capital Works

Sewage Treatment Upgrades

The contract to construct the new effluent disposal beds and associated pump station is virtually complete. There were delays associated with the contractor having problems with achieving a water tight wet well and some re-work was required to form the new beds to an acceptable standard. Over the weekend of July 9th work was done to stop the leaking in the pump sump. The masonry work that was carried out is presently been cured before any testing can be done on the system.

While these delays have been frustrating, the final construction quality is more than acceptable.

The design and specification of an inlet screen for the oxidation pond is also well advanced. Four potentially acceptable screen options were identified, which were all about the same price, but came with differing levels of after market service and differing histories for brand performance and reliability. Within the next month the specification for the installation requirements should be finalised and the final costs established. Based on current information, the total cost estimate for supply and installation is around \$100,000.

Connell Wagner will liaise with Council for the Commissioning of the new systems.

4.0 STORMWATER

Urban Stormwater

There has been no problem with the town's stormwater system for the month. There has however been a complaint about the stagnant condition of the open earth drain that runs along Ludstone Road/Rorrisons Rd. Folton Hogan the contractors have scheduled to correct the situation by 17th July 2005.

Discharge Audit

Audit of individual properties started on June 27th 2005 and is presently ongoing. To date Council staff has assessed 421 properties within the South Bay, Wakatu Quay and Esplanade/Torquay

area. 18 properties (4.3%) were found to be connected to the sewer system, of the 18 that were connected 6 have already been corrected with the other premises to be notified.

5.0 PARKS & RESERVES

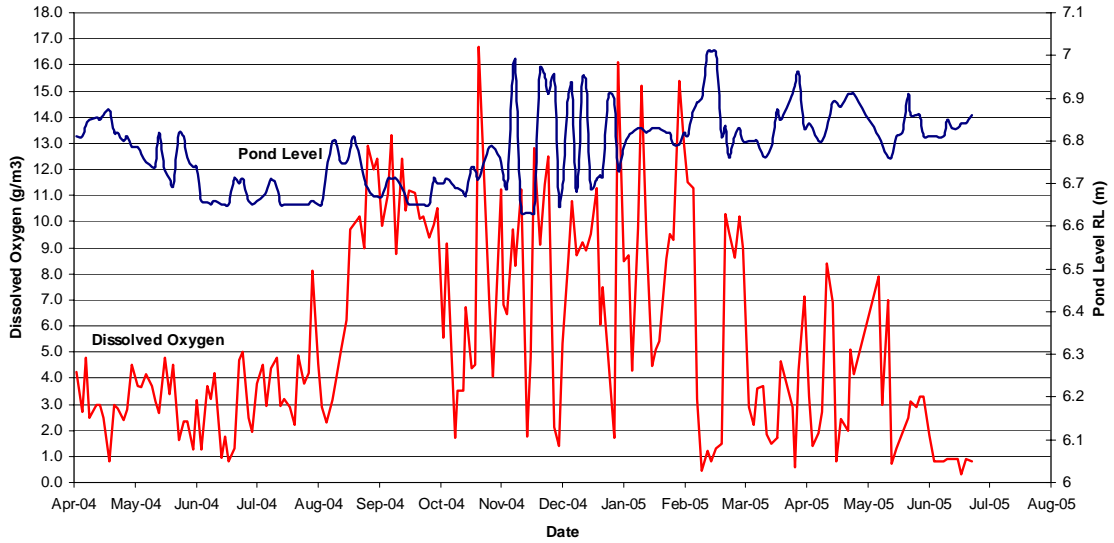
In addition to Roche Contracting Ltd contractual agreement additional works were carried out for the Council within the reporting period and includes croquet trimmings and hedge cutting in some areas along the Esplanade. Overall the areas are in a fair condition.

The chains and seating on swings at Churchill Park (old), Goose Beech, and SouthBay have been replaced with new ones for safety reasons. The old seats were worn out with exposed rough edges and projections.

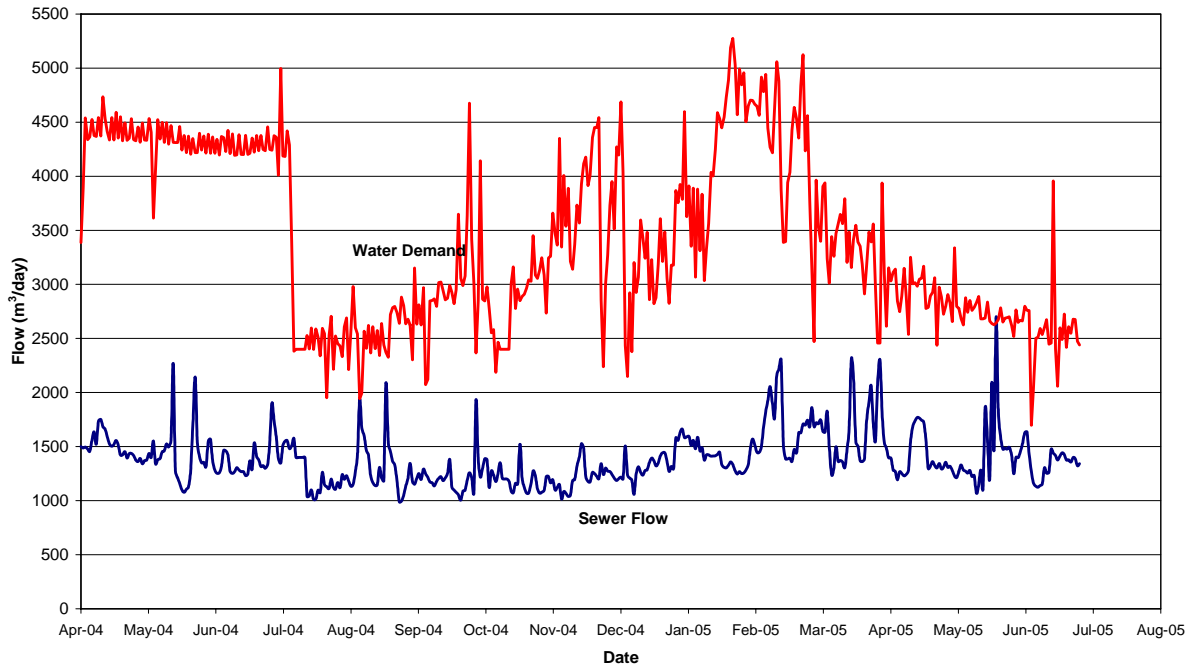
6.0 PUBLIC TOILETS

Most of the public toilets are in a fair condition however there continue to be numerous complaints about the facility at the West End which are dealt with immediately upon receipt, (e.g leaking taps)

**Kaikoura Oxidation Pond
DO & Water Levels
(April 2004 to July 2005)**



**Water Demands & Sewer Flows
(April 2004 - July 2005)**



Roading Report

LAND TRANSPORT PROGRAMMES/RECORDS

Returns and information are being supplied to Transfund New Zealand as requested.

With the end of the financial year we are tidying up expenditure and preparing the final claim to go into Land Transport New Zealand.

ROUTINE ROAD AND BRIDGE INSPECTIONS

Routine road and bridge inspections are continuing with the roads in the Northern Area inspected on 6 July 2005. (A copy of the record of inspection is attached.) The roads in the Kekerengu area were found to be in very good condition, having recently been graded and maintenance gravelled. The Blue Duck and Puhi Puhi Roads were in reasonable condition, although sections require maintenance grading.

A number of routine repairs were identified. These will be programmed to have work carried out on them.

RAMM SYSTEM UPGRADE

Maintenance of the RAMM system is ongoing and will be updated as more information becomes available.

TRAFFIC COUNTING PROGRAMME

Traffic counts for the month of June include the following roads:

- 1) Blue Duck Valley Road
- 2) Killarney Street (Upper)
- 3) Kiwa Road

Traffic on both Blue Duck Valley Road and Killarney Street has remained relatively constant over the past five years.

The count taken at Kiwa Road is in response to New Zealand Rail Corporation requesting traffic counts for all the rail crossings throughout the country. This was also noted in last month's report when we reported on traffic counts for Moana Road at Goose Bay.

As requested, we are continuing to forward copies of the traffic counts and speed matrices to the Kaikoura Police.

FOOTPATH UPGRADES

The asphaltting of Beach Road is now complete. Over the next week the laying of asphalt continues on Killarney Street, The Esplanade and part of Ludstone Road. The chip sealing continues on Kotuku Road, Kea Place and the north end of Beach Road with Whitby Place to follow.

WEST END REDEVELOPMENT – STAGE ONE

This project is complete and in maintenance.

RESEALING 2005/2006

The roads to be resealed in the 2005/2006 financial year have been measured up, seal designs completed, and the contract specification drafted. It is intended to tender this work shortly with tenders closing mid August 2005.

MAINTENANCE GRAVELLING 2005/2006

Over the next few months we will gather information as to which roads to maintenance gravel in the current financial year.

STOCK EFFLUENT ON COUNCIL ROADS

Follow up with the individual land owners is still to be carried out.

MOA POINT SEAWALL

The Resource Consent Application has been completed and is ready to lodge with Environment Canterbury.

STREET LIGHT UPGRADES

The next stage will look at the Deal/Hastings/Adelphi/Ludstone area as well as tidy up other small areas. A schedule and price is expected from MainPower early next month.

BAYVIEW STREET UPGRADE

Tenders have been called for the upgrading of Bayview Street. Tenders close on 26 July 2005.

We have delivered an information sheet to all houses in Bayview Street advising them of the work to be carried out and timing for this work. The information sheet also invites any feedback in relation to the project.

ROAD MAINTENANCE CONTRACT RECORD OF INSPECTION

6 July 2005

1 Kekerengu Valley Road

- (i) Small edge break, second sealed section right hand side.
- (ii) Clean detritus off deck of bridges (this is a general note for all bridges in Kaikoura).
- (iii) Road in good condition, recently graded and maintenance gravelled.

2 Wiffens Road

- (i) Road in good condition. Recently graded and maintenance gravelled.

3 East Lane

- (i) Road in good condition. Recently graded and maintenance gravelled.

4 Ellerton-Valhalla Road

- (i) Apply seal coat to old repair.
- (ii) Unsealed section in good condition. Recently graded and maintenance gravelled.

5 Unnamed Road – Clarence (Station Road)

- (i) Flat and potholed. Requires to be graded and cambered between State Highway 1 and railway crossing.

6 Clarence Valley Road

- (i) Tidy up around new cattle-stop plus apply extra maintenance gravel each side.
- (ii) Section beyond Silver Springs Road when inspected last was heavily potholed. Road has been graded but potholes have not been cut out. Can clearly see gravel graded into potholes which will quickly reform. Road needs to be heavily cut to remove potholes.

7 Inland Road

- (i) A number of marker pegs are damaged or missing. Contractor to reinstate marker pegs to correct standard.

8 Matariki Road

- (i) Recently graded and maintenance gravelled. Road has some potholes as a result of grading too flat. Contractor to correct this.

9 Waipapa Road

- (i) Road in good condition. Recently graded and maintenance gravelled.

10 Blue Duck Road

- (i) Culvert 22 – clean out surface water channel between Culverts 21 and 22. Stand netting back up around small drop out and monitor.
- (ii) Culvert 47 – end of culvert has dropped out. Contractor to make safe with netting and to programme in repair. Culvert diameter 450mm.
- (iii) Road needs grading.
- (iv) Surface water channel end of road, left hand side, needs to be reformed. This goes from corner with gully (Culvert 76) to end of road.
- (v) Slip just past Culvert 71. Salvage large rock and any good material for repair at Culvert 47.

11 Hapuka Road

- (i) Three to four edge breaks, left hand side by café and corner.

12 Puhi Puhi Road

- (i) Drop out at buff. Extend guard rail 11 metres and clean out surface water channel left hand side down to culvert, which is 30 to 50 metres away. Bring in basecourse and form mono-camber to road to ensure that water does not flow over bank but is retained in water channel and channelled away to culvert. This work is urgent. This work was clearly detailed in Record of Inspection 12 May 2005, item 10 (iv).
- (ii) Section between Puhi Puhi Number 1 Bridge RP 5.15km to 10km in need of grading. This section should also be flagged for maintenance gravelling this financial year.
- (iii) Looked at request from Kevin Topp to place culverts just north of Turners Mistake. Viewing site, there doesn't appear to be the need to put the culverts in. Murray to reply to Kevin Topp.

13 Harnetts Road

- (i) There is significant edge break on the section west of Wilderness Road. Contractor to mark out and advise of extent and cost. Again, this was looked at on 12 May 2005. Look at Record of Inspection, item 11 Harnetts Road.

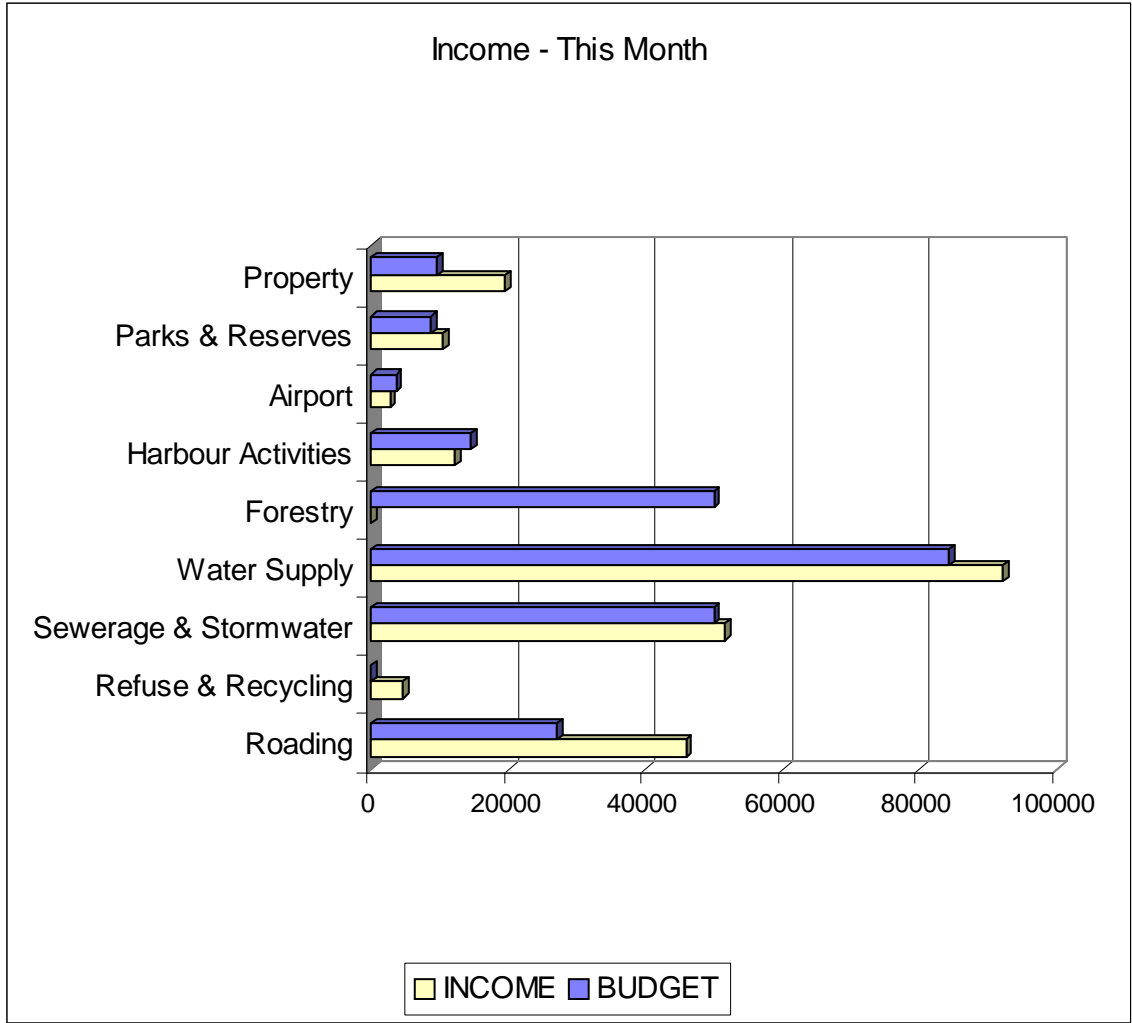
14 General

In the past, work noted in the Road Inspections has not been getting carried out as is evident with this inspection in regard to work at the Puhi Puhi slip and work on Harnetts Road. It is hoped that, with the change in personnel, all works will be carried out in a prompt manner to the required specification.

15 Next Inspection

The date of the next road inspection is 3 August 2005.

Works & Services Budget Report



Expenditure - This Month

