

**KAIKOURA DISTRICT COUNCIL WORKS AND SERVICES
COMMITTEE MEETING HELD AT 9.00AM ON WEDNESDAY 21
DECEMBER 2005 IN MEMORIAL HALL SUPPER ROOM,
ESPLANADE, KAIKOURA.**

AGENDA

1. Apologies

2. Matters of Importance to be raised as Urgent Business.

3. Matters Arising from Report of 16/11/2005

page 71

4. Minutes Action and Issues List Update

MEETING	ACTION REQUIRED	BY	DATE ACTIONED
	18 MAY 2005		
Works	Meeting with local farmers re stock effluent	Murray	In Progress
	17 AUGUST 2005		
Works & Services	Investigate the costs of a close circuit camera at the West End toilet facility and cost of moving camera around various locations	Marlene	Price has been obtained and is budgetable.
	19 OCTOBER 2005		
Works & Services	M Fletcher to speak with Chief Executive Officer regarding stock effluent on Rorrison's Road	M Fletcher	In Progress
Works & Services	Report on Setting of Speed Limits criteria	M Fletcher	Page 15
	16 NOVEMBER 2005		
Works & Services	Investigate erecting litter and recycle signs at Whaleway carpark	Marlene	In Progress
Works & Services	Meet with local police sergeant regarding policing of youth congregating at Whaleway carpark, and continuing vandalism of the town's toilet facilities	Councillor Pablecheque / Mayor Heays	In Progress
Works & Services	Investigate cost of replacing banners to fit existing banner arms	Councillor Macphail	In Progress
Works & Services	Investigate with Mainpower underground cabling in Bayview Street is installed prior to sealing of footpaths	Gallo	In Progress
Works & Services	Seal 345m section of Old Beach Road	Gallo	In Progress

5. Reports:

- **Works and Services Report** *page 1*
- **Roading Report** *page 5*
- **Works and Services Budget Report** *page 10*

6. Urgent Business

Works & Services Reports

WATER SUPPLY

Urban Water

The water demand for November 2005 showed a slight decrease when compared to September 2005 averaging 2697.03m³/day. The attached graph shows the water demand trend from October 2004 to November 2005.

During the month the system developed some operational problems with residents along Beach Rd, Scarborough Street complaining of Low water pressure. This was however corrected.

New Water Source

The installation of a second bore commenced during the month and work is progressing smoothly. It is anticipated that the Commissioning of the new bore will be early 2006 rather than the anticipated December 30th as was previously reported.

Subsequent to the taking of water from the system by the present owners, the Kincaid system ran out of water over the weekend of November 22, 2005 however this did not affect those connected to the Kincaid supply as all of these people are on restrictors and therefore have their own internal reservoirs. To prevent this from happening again the monitoring level in the reservoir at which an alarm is triggered for action is set at 50% full. When the reservoir reaches this level the present owners will close their system.

Kincaid Water Supply

The commissioning of the chlorination system was undertaken on November 23, 2005, followed by the removal of the boil water notice.

SEWER SYSTEM

Urban Reticulation

The sewage flow averaged 1272.26m³/day during the month of November, a slight decrease from the previous month. The maximum recorded flow was 1432.4m³/day.

The measured dissolved oxygen continues to meet the resource consent conditions averaging 6.4mg/l during the reporting month as is shown in the attached graph.

The major break down throughout the month was damage to the air valve located at the Oxidation pond on the 300 AC Mill Rd pumping main; this was however repaired temporarily on the same day and will be properly repaired when the inlet screens are being installed.

STORMWATER

Urban Stormwater

There have been no major operational problems during the month and all outstanding complaints that were received during the Month of October were addressed.

PARKS & RESERVES

The maintenance to these assets continues with no major problems during the month. The installation of the playground at Gillings Lane Reserve has now been completed and is safe for use.

17 new bins were installed along the Esplanade and in the South Bay area.

PUBLIC TOILETS

The facilities are being fairly maintained with few minor malfunctions during the reporting month.

As a follow-up to the installation of cameras at the toilets, a response from East Coast Security re the relocation of cameras has been obtained.

KAIKOURA AIRPORT

Sealing of Taxiway

This work is now complete.

LYELL CREEK FOOTBRIDGE

The preliminary design of the Lyell Creek footbridge is now complete. The design is presently with the Quantity Surveyors who are costing it. The breakdown of the costs and the preliminary engineering drawing will be provided to Council on the day of the meeting. Prior to any further design costs, it is recommended that Council makes a decision if the estimated cost and design is acceptable for implementation.

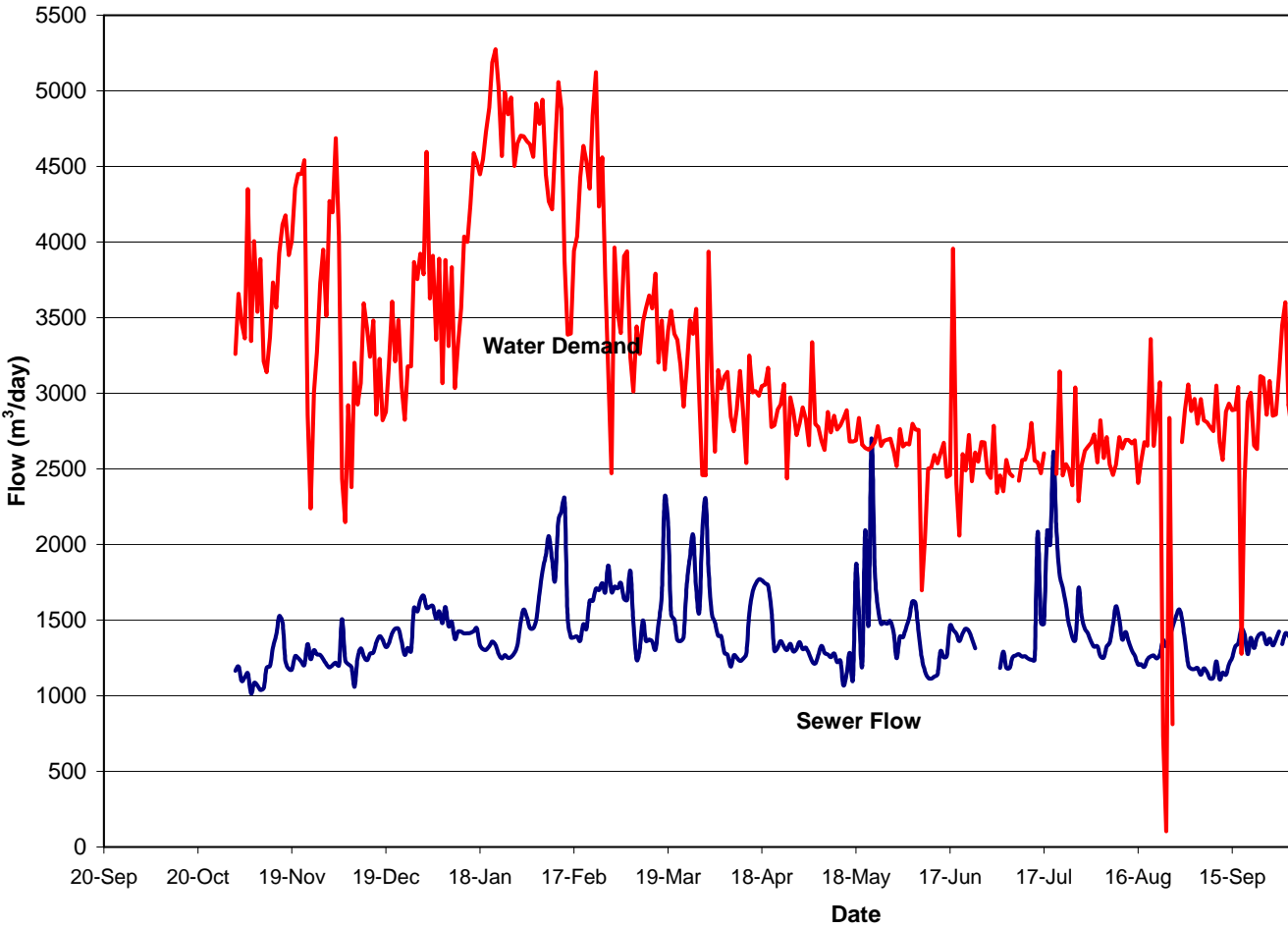
STATE HIGHWAY 1 / WEST END INTERSECTION

A request was made to Barry Stratton by the Kaikoura Business Group to investigate the short term possibility of an additional lane to allow for left and right hand turning traffic onto State Highway 1 from West End. In response to this request B Stratton has submitted a proposal for comments from the Business Discussion Group and Council. The response from the Business Discussion Group and the proposal is shown on page 12.

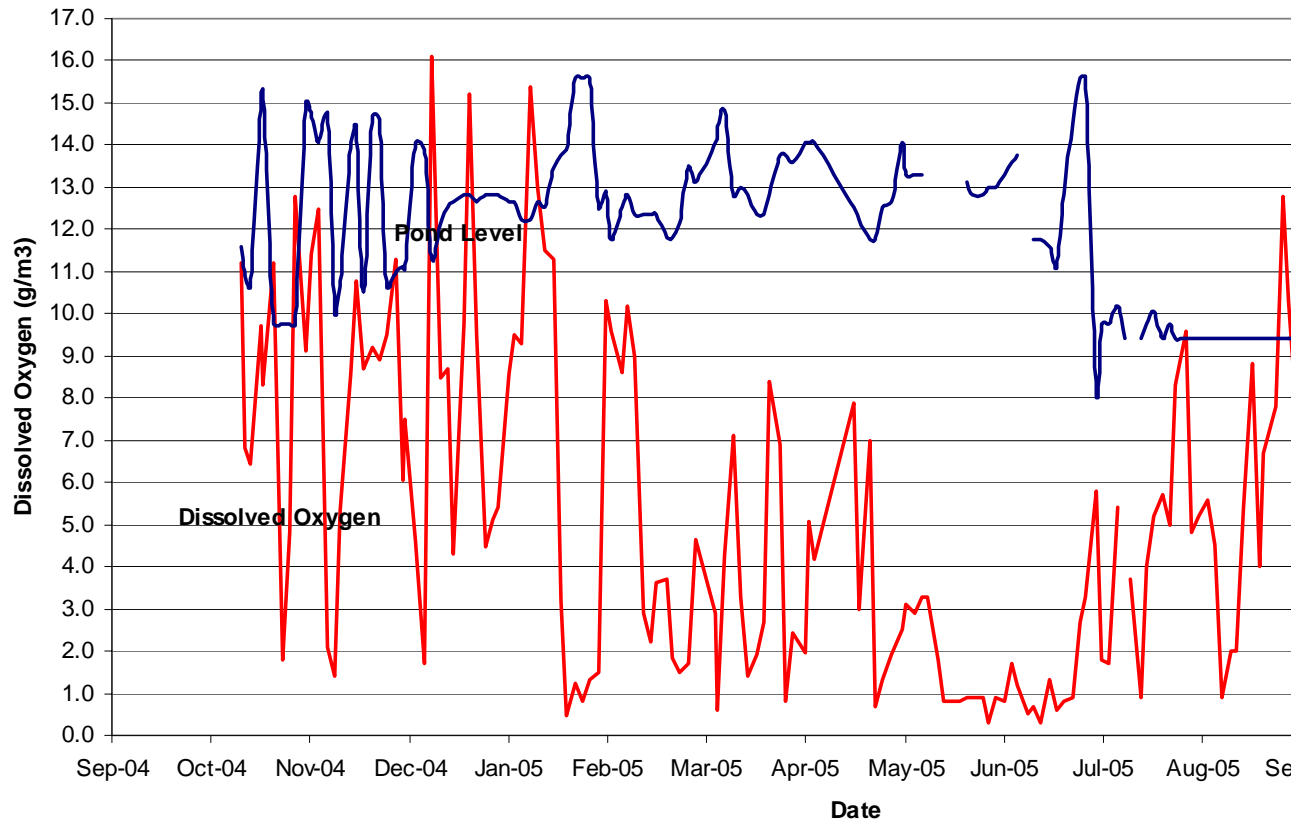
OTHER

Work is continuing on the processing of resource consents.

**Water Demands & Sewer Flows
(October 2004 - November 2005)**



**Kaikoura Oxidation Pond
DO & Water Levels
(Sept 2004 to November 2005)**



Roading Report

LAND TRANSPORT PROGRAMMES/RECORDS

Returns and information are being supplied to Transfund New Zealand as requested.

Kaikoura's 2006/2007 Land Transport Programme has been submitted to Transfund. The updated forward works programme is also soon to be submitted. This includes the Middle Creek Bridge replacement programmed for the 2006 / 2007 financial year.

Land Transport New Zealand has carried out a Procedural Audit of the Council's Land Transport funding back to 2001/2002. While we have not received LTNZ's report to date, we understand that except for one or two minor concerns everything is in order.

ROUTINE ROAD AND BRIDGE INSPECTIONS

Routine road and bridge inspections are continuing with the roads in the southern area inspected on 30 November 2005. (A copy of the record of inspection is attached.) Roads were found to generally be in a satisfactory condition with the exception of the unsealed section of Schoolhouse Road which has since been graded.

Of concern was that tree, shrub and grass cutting for all roads had not yet commenced. The timing for tree and shrub cutting is specified for between September and November each year. Mowing of all sealed and unsealed roads is also required in November.

There is also outstanding work on the Blue Duck Road including the repair of three slips and surface water channelling, all is considered urgent. Works Infrastructure has now advised that this work will not be carried out until 9 January 2006. We have expressed our concerns to Works, however, have not been able to get them to do the work sooner.

RAMM SYSTEM UPGRADE

Maintenance of the RAMM system is ongoing and will be updated as more information becomes available.

TRAFFIC COUNTING PROGRAMME

The traffic counting programme is completed for the year and will recommence in January 2006. The traffic counter is available over the Christmas period, if there is a need or wish to do one off counts on any roads.

FOOTPATH UPGRADES

The contract has reached practical completion with the final chip sealing work completed on Brighton Street and Adelphi Terrace. Care and maintenance of the new grass berms is still ongoing during the defects liability period.

The report of grass growing through the Kiwi Street and Beach Road footpaths has been inspected and the Contractor will spray and kill the grass in question.

RESEALING 2005/2006

The work is programmed to commence in early February 2006. The Contractor is T.C. Nicholls.

MAINTENANCE GRAVELLING 2005/2006

A list of the roads to be maintenance gravelled in the 2005/2006 financial year has been prepared and will be forwarded to the Contractor to carry out during March/April. The following roads are included:

1. Puhi Puhi Road - Between RP 5.1 and RP 10.1.
2. Blue Duck Road - Between RP 8.0 and RP 10.8.
3. Grange Road - 1.1km unsealed section.
4. Southern unsealed roads – Glen Cree Rd, Rakanui Rd, Valley Rd and Waitane Rd.
5. In addition to the above a light spread of maintenance gravel will be applied to other sections on Blue Duck Road following proposed surface water channel maintenance.

STOCK EFFLUENT ON COUNCIL ROADS

Further meetings with the individual landowners will continue over the coming months. Once all the landowners have been spoken to a report will be prepared for Council.

MOA POINT SEAWALL

We have received a letter from Environment Canterbury requesting further information. We believe that the request is unnecessary and unreasonable. We are arranging a meeting with the Consents Officer to discuss.

STREET LIGHT UPGRADES

The MainPower price for Stage 3 has been accepted and the materials ordered. It is expected that the installation of the Stage 3 lighting will commence in early 2006.

Stage 4 is likely to include Upper Killarney Street and Scarborough Street. South Bay and streets adjoining Beach Road are the other areas remaining.

BAYVIEW STREET UPGRADE

Work is nearing completion with the installation of the new kerb and channel and timber battens along the footpath completed. Work still required includes reinstatement and sealing of the footpath and road surfaces and final preparation of grass berms and planting beds. Completion is expected prior to Christmas.

SPEED LIMITS

As requested we attach a summary of the Speed Limit Criteria on page 15.

**Infrastructure Works Timetable
2005/2006**

Project	Awarded	Contractor	Start Date	Completed
Resealing 2005/2006	Yes	T.C. Nicholls	February 2006	-
Footpath Upgrading	Yes	Fulton Hogan	January 2005	Yes
Street Light Upgrades	Yes	MainPower	January 2005	-
Maintenance Graveling	Yes	Works Infrastructure	April 2006	-
West End Redevelopment Stage I	Yes	Works Infrastructure	February 2004	Yes
Road Marking	No	-	March 2006	-
Watermain Renewals 2005/2006	No	-		-
Sewage Treatment Upgrade	Yes	City Care Limited	February 2005	Yes
Moa Point Seawall	No	-	??	-
Bayview Street Upgrade	Yes	Works Infrastructure	September 2005	-
Peninsula Booster Pump Stn	Yes	Works Infrastructure	November 2005	-
New Water Source	Yes	Fulton Hogan	December 2005	-
Oxidation Pond Screen	Yes	Fulton Hogan	January 2006	-
Desludging of Oxidation Ponds	No	-	April 2006	-
Sewer Trunk Main	No	-	March 2006	-

RECORD OF INSPECTION ROAD MAINTENANCE CONTRACT

RECORD OF INSPECTION

30 November 2005

1. Birches Road

- i) Satisfactory condition, vegetation in centreline otherwise little deterioration since last grade.

2. Glencree Road

- i) A few potholes evident. Maintenance gravelling this financial year.

3. Oaro M

- i) Good condition, gravel has been swept off roadway.

4. Waitane Road

- i) A few potholes in unsealed area.

5. Moana Road

- i) Good condition.

6. Valley Road

- i) Potholes developing. Maintenance gravelling this financial year.

7. Peketa Road

- i) Chip sealing of carriageway has not started as programmed. Works unable to commence until new year.

8. Inland Road

- i) Bridge end marker on culvert headwall prior to Little Linton bridge is lying on ground and needs refixing.
- ii) Repair pothole prior to new gabion baskets.
- iii) Remove debris from edge of roadway along Greenburn bluffs.
- iv) Make up metal required to low shoulder on downhill section opposite new gabion baskets.
- v) Edge break repair and make up metal needed on inside corner at Kahutara bridge.
- vi) Scrub and tree cutting plus mowing for November not done.

- vii) Scotts Road sign missing (Replacement sign in depot).
- viii) Centreline marking has been remarked in low area prior to Greenburn bridge

9. Scotts Road

- i) Requires grading. Minor corrugations and badly potholed at bottom of hill.

10. Blunts Road

- i) Adequate condition although becoming due for a grade. Fords need attention and vegetation appearing in centreline and road edges. Grading to continue to extend out full width.

11. Dairy Farm Road

- i) Satisfactory condition
- ii) Dropout of road edge at culvert on steep hill section. Culvert pipe to be extended to allow for reinstatement of road edge using concrete bags if necessary.

12. Kowhai Ford Road

- i) Satisfactory, some corrugations. Look at including on maintenance gravelling programme.

13. Harris Lane

- i) Adequate condition considering use but has not been graded in some time.

14. Red Swamp Road

- i) Sweep metal from sealed roadway at entrances, particularly at silo by Schoolhouse Road corner.

15. Schoolhouse Road

- i) Unsealed section requires grading to repair numerous potholes.

16. Postmans Road / Chapmans Road

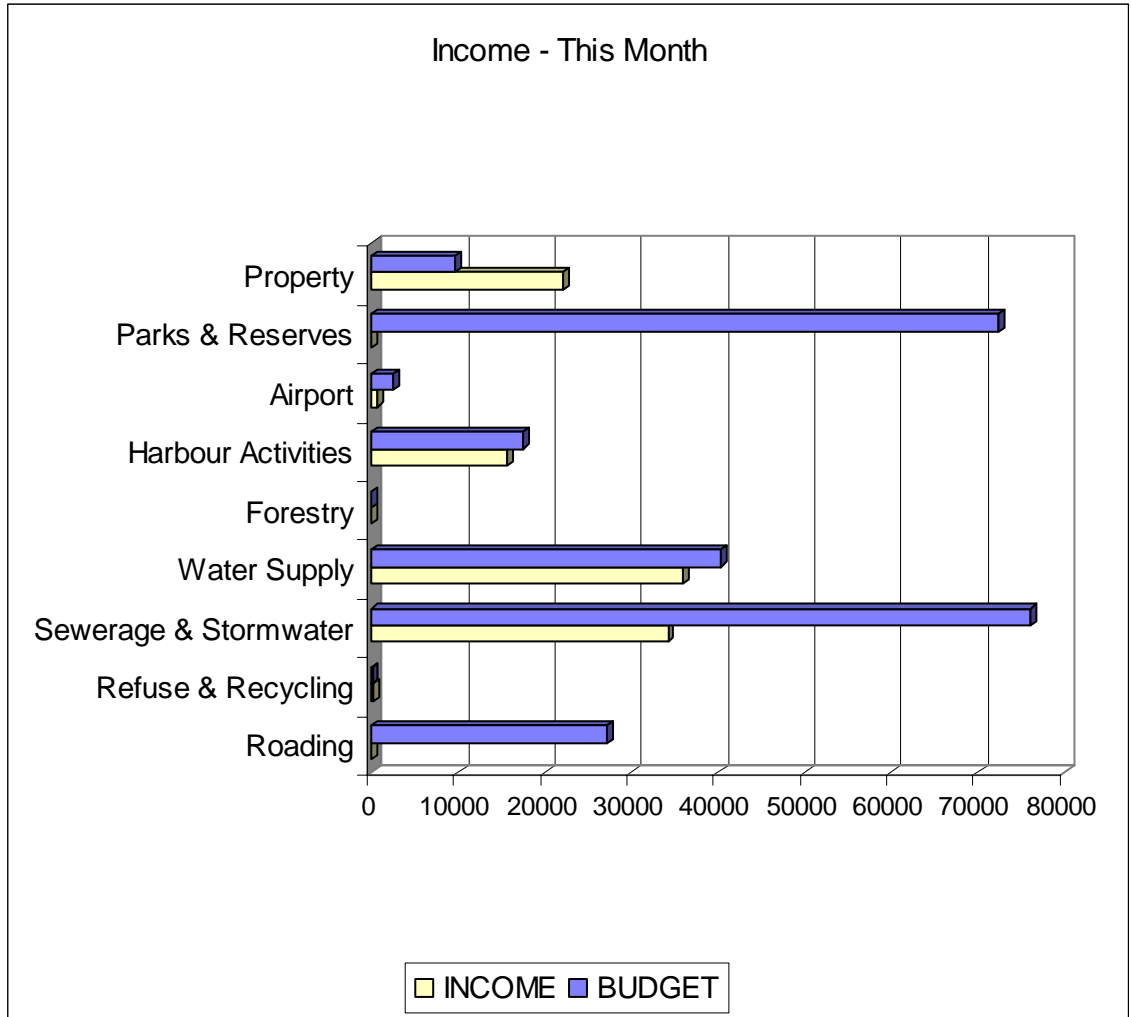
- i) Satisfactory condition. Has been recently graded.

17. McInnes Road

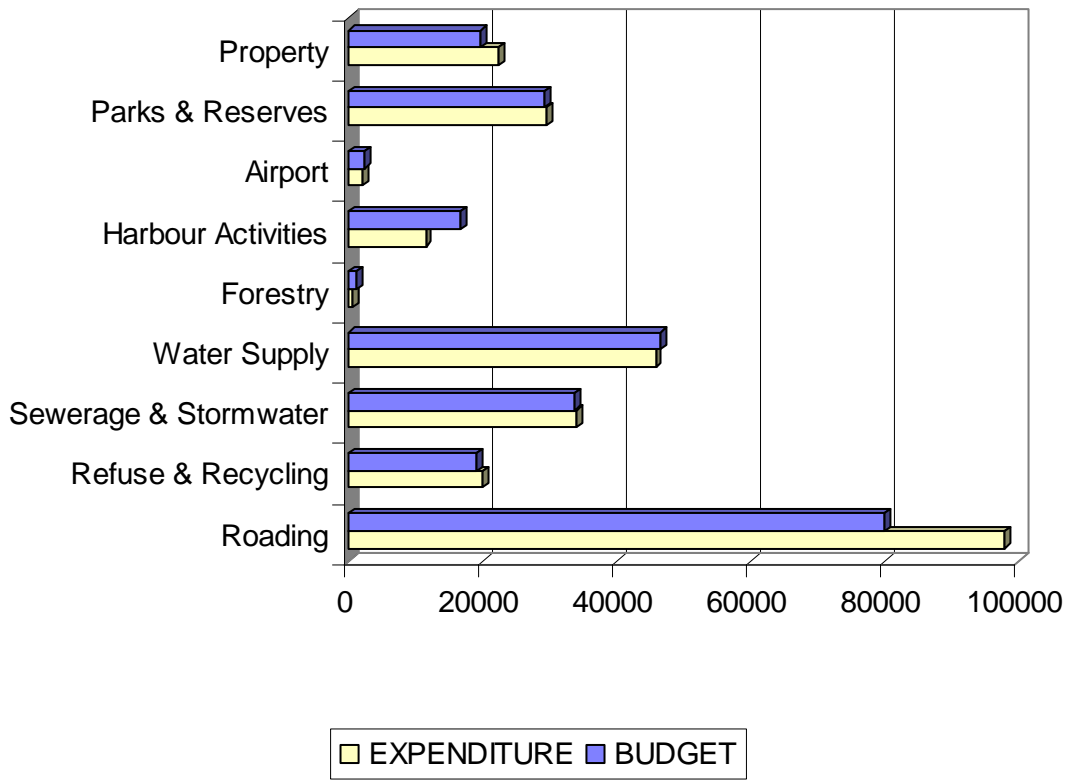
- i) Satisfactory. Problem area over first few hundred metres has been repaired

Note: Grass mowing and scrub and tree cutting due in month of November not yet done for all roads.

Works & Services Budget Report



Expenditure - This Month



Information on Land Transport NZ - Setting of Speed Limits Guidelines

(Available on the Land Transport website (<http://www.ltsa.govt.nz/roads/speed-limits/speed-limits-nz.html>))

Refer 'The decision making process – calculating the speed limit' (page 56 - section 4.0)

The Survey

A survey is carried out on the section of road using a survey form (the form and a completed example is downloadable at the bottom of the web page, Appendix II).

The survey is separated into two areas, Development Rating and Roadway Rating. Information is recorded in 100 metre lots with one survey form covering each one kilometre section of road. The diagram box on the left hand side of the form is used to record the various features as you travel along the road i.e. x = vehicle entrance.

Development Rating (page 57)

This is the survey of roadside features such as houses, vehicle entrances, shops and public buildings. Table SLNZ4 on page 58 gives the rating unit to be used for the various roadside development. The rating units are then summed up in 100 metre lots and entered into the box on the survey form. Side roads are also surveyed a distance of 500 metres each side of an intersection. For the side road portion, Table SLNZ5 (page 60) is used to convert the total rating units from the survey of the side road into a rating unit to be entered into the box on the survey form.

Roadway Rating (page 60)

A rating unit is also given for various roadway features such as footpaths and parking or lack thereof. The rating units are found in the tables on pages 61 and 62 and entered into the box on the survey form for each 100 metre lot.

An important point when calculating the total rating is that the Roadway Rating can not be greater than the Development Rating. For example a section of narrow road with no footpath, cycleway or parking provision would generate a high number of Roadway Rating units. However the Development Rating for a semi rural area could be quite low and as such the Roadway Rating total would be reduced to equal the Development Rating total.

Average Rating (page 63)

The average rating is found by adding together the Development and Roadway Rating totals for the total length of road being assessed and dividing this by the number of 100 metre sections.

For example, a 900 metre section in a rural area with a Development Rating of 18 and a Roadway Rating of 24 (reduced to 18) gives an average rating of 4 $(18+18 / 9)$

The Tables and Figures on pages 64 to 67 are then used to find the recommended speed limit.

For example an average rating of 4 in a rural area has a recommended speed limit of 80km/hr.

Further Information to Consider in the Decision Making Process.

Section 2 (page 42) and Section 3 (page 47) provide information to confirm the appropriate speed limit. Information is provided on appropriate situations and the minimum lengths for various speed limit restrictions and other factors to consider prior to the changeover.

