

**KAIKOURA DISTRICT COUNCIL WORKS AND SERVICES
COMMITTEE MEETING HELD AT 9.00AM ON WEDNESDAY 15
FEBRUARY 2006 IN MEMORIAL HALL SUPPER ROOM,
ESPLANADE, KAIKOURA.**

AGENDA

1. Apologies

2. Matters of Importance to be raised as Urgent Business.

3. Matters Arising from Report of 21/12/2005

page 73

4. Minutes Action and Issues List Update

MEETING	ACTION REQUIRED	BY	DATE ACTIONED
	18 MAY 2005		
Works	Meeting with local farmers re stock effluent	Murray	In Progress
	16 NOVEMBER 2005		
Works & Services	Investigate erecting litter and recycle signs at Whaleway carpark	Marlene	In Progress
Works & Services	Seal 345m section of Old Beach Road.	Gallo/M Fletcher	In Progress
	21 DECEMBER 2005		
Works & Services	Arrange for Road Sweepers to sweep Whaleway carpark area weekly	M Fletcher	In Progress
Works & Services	Investigate wireless closed circuit camera system	Councillor Macphail	In Progress
Works & Services	Arrange meeting with Works Infrastructure South Island Manager and Kaikoura Works Infrastructure regarding roading contract and work in general	M Fletcher Councillors Pablecheque and Seddon	In Progress
Works & Services	Inspect Ludstone Road/Red Swamp Road road surface in relation to complaints received of large trucks breaking up the road.	M Fletcher	In Progress
Works & Services	Place Traffic Counter on Hawthorne Road (Beach end) outside St John on yearly basis	M Fletcher	In Progress
Works & Services	Provide costings and design of a basic bridge for Lyell Creek and pursue all funding avenues	Gallo / M Fletcher/ Council	In Progress

5. Reports:

- **Works and Services Report** *page 1*
- **Roading Report** *page 6*
- **Works and Services Budget Report** *page 11*

6. LTNZ Financial Assistance Base Rates for 2006/07 *page 13*

For Information

7. Urgent Business

Works & Services Reports

WATER SUPPLY

Urban Water

Operations

During the Month of December a few problems were encountered with the water supply system. On December 18, 2005 a malfunction in the telemetry system resulted in the Peninsula reservoir emptying, this was followed by the burning of the chlorine dosing pump at the chlorine shed and the pump that operates the valving system at the Fords Reservoir the following day. The problems encountered as a result of these malfunctions were corrected and the system returned to normality within 4 days.

Entrained air in the water supply system has sporadically destabilized the supply zone of the Peninsula area, specifically within the Scarborough Street. The result of air in the system is low pressures and resulted in some properties on the high side of the street with tanks running out of water. Fulton Hogan has always responded to these issues and resolve the situation by pressurizing the distribution system.

Apart from the system being aerated some days within the reporting period, the system operated fairly well. Notwithstanding the above there were some complaints to the Council regarding discoloration of linen from the water. This complaint was investigated and based on the laboratory results Council was fairly satisfied that the discoloration was not attributable to the water being supplied.

Water Demand

During the month of December 2005 through to January 2006 there was a two-fold increase in water demand. The system was managed effectively during the period by supplementing the demand with water from the alternate bore. The graph below shows only the total supply from the Waimangara however, the table below gives a break down of the total water supplied from the system for the period December 21, 2005 through to January 12, 2006.

Dates	Demand – Chlorine shed (m³)	Demand – Alternate Bore (m³)	Total Demand (m³)	Average Demand (m³/day)
21-31, Dec 2005	41,063	15339.6	56402.6	5640.2
1-4, Jan 2006	14,237	6,578.5	20,815.5	5203
4-12, Jan 2006	30,513	12,291.84	42,804.8	5350.6

New Water Source

Work is continuing on this system with the construction of the Chlorine shed underway. All the piping connections and major electrical works have been completed. The sinking and development of the second bore has also been completed.

The construction of the booster pumping station at the Fords Reservoir is progressing.

Kincaid Water Supply

During the operations of the system it has been observed that the storage capacity for the Kincaid Supply i.e. "The reservoir" appears to be small. During high demand it was observed that the

reservoir emptied within an hour. The minimum storage volume requirement based on present demand of 5l/s is 450m³.

With the operations of the alternate bore the Kincaid system was able to maintain its supply rather than emptying as was observed during this high demand period. Continuous 24 hour supply was maintained for the Kincaid supply during the period.

SEWER SYSTEM

Urban Reticulation

The sewage flow averaged 1245m³/day during the month of December 2005 and 1676.5m³/day during January 2006. The maximum flow recorded was 1978m³ from January 26 – 31 2006. The resource consent condition which specifies that discharge shall not be greater than 2500m³/day has been complied with throughout the period based on the flow data obtained at the effluent pumping station.

The measured Dissolved Oxygen continues to meet the resource consent conditions averaging 4.9mg/l and 5.5mg/l for December 2005 and January 2006 respectively. For the period the DO dropped below the resource conditions only once.

The major break down throughout the month was blockages within the effluent pumps at the Oxidation Ponds.

STORMWATER

Urban Stormwater

There have been no major operational problems during December 2005 and January 2006.

PARKS & RESERVES

Maintenance to these assets continues with no major problems during the reporting months.

PUBLIC TOILETS

Public toilet facilities are being fairly maintained with few minor malfunctions during the reporting months at both the West End and Jimmy Armers facilities.

LYELL CREEK FOOTBRIDGE

As per Councils recommendation, two types of footbridges have been investigated as an alternative to the Cable Stayed Bridge and below are the details for each option:

Option 1 – A simply supported reinforced concrete bridge similar to the recently constructed footbridge.

Option 2 - A timber footbridge similar to the one shown below:



Summary of Estimated Costs for the 3 Options

Option	Estimated Cost	Excluding
Cable Stayed Bridge	\$345,000.00	<ul style="list-style-type: none"> - Consent - Professional Fees - Legal & Financing - Land Costs - GST
Simply Supported Reinforced concrete Bridge	\$150,000.00	
Timber Bridge	\$180,000.00	

It is recommended that Council makes a decision as to which option to implement.

STATE HIGHWAY/WEST END INTERSECTION

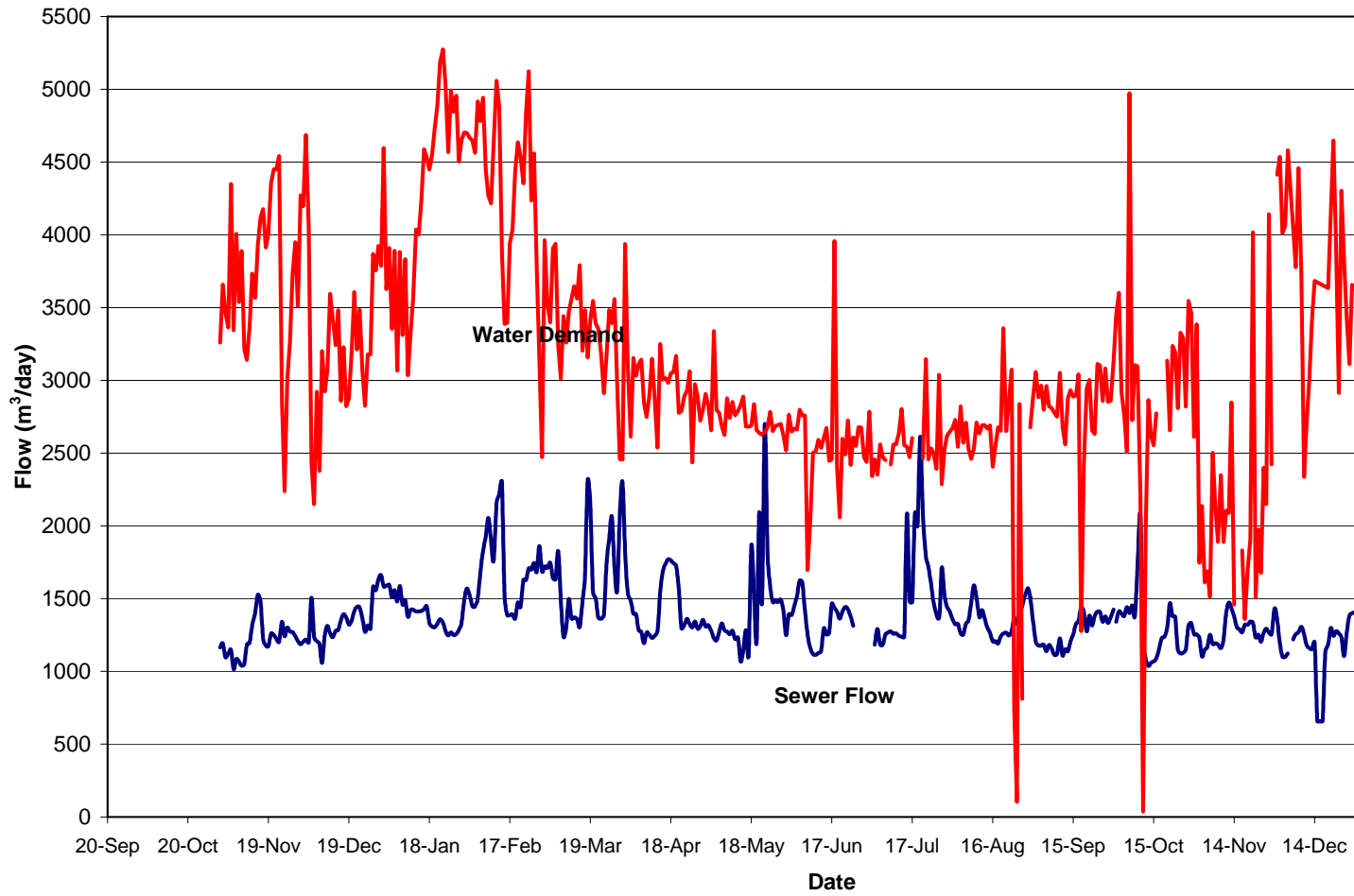
SH 1 Hotmix Resurfacing of Ludstone Rd/West End/Lyell Creek Bridge area of SH 1

James Park of Transit New Zealand has informed us that Transit New Zealand’s Maintenance Contractor - Works Infrastructure - has programmed a major intersection treatment at this site to commence 27 February 2006. The work is expected to take a week however they are allowing through to 15 March 2006 for bad weather. The intersection will be milled off with the two islands present being removed. The area will then be repaved and road marked with some changes incorporated that have already been discussed with the Council.

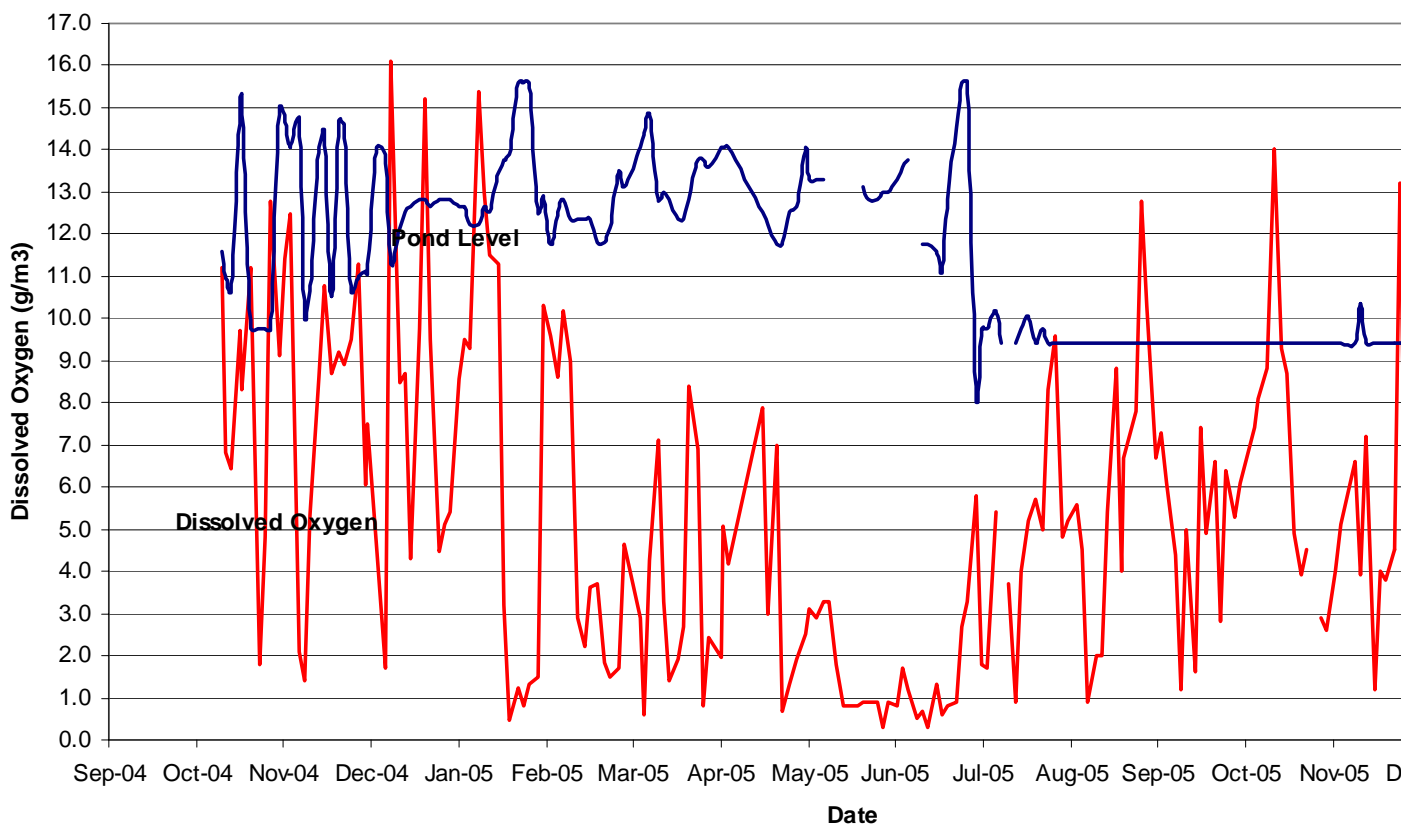
OTHER

Works continue on the processing of resource consents.

**Water Demands & Sewer Flows
(October 2004 - January 2006)**



**Kaikoura Oxidation Pond
DO & Water Levels
(Sept 2004 to January 2006)**



Roading Report

LAND TRANSPORT PROGRAMMES/RECORDS

Returns and information are being supplied to Transfund New Zealand as requested.

Kaikoura's 2006/2007 Land Transport Programme has been submitted to Transfund. The programme currently submitted in draft status will be reviewed and resubmitted as a final programme in March 2006.

ROUTINE ROAD AND BRIDGE INSPECTIONS

Routine road and bridge inspections are continuing with the roads in the northern area inspected on 18 January 2006. (A copy of the record of inspection is attached.) Grading was underway on Puhi Puhi Road with grading required on the majority of roads further north.

Tree, shrub and grass cutting work has been carried out, although low branches and shrubs overhanging the roadway were evident along numerous roads. Works Infrastructure has been instructed to follow this up and ensure the work is done to the standard detailed in the specification.

Repairs to the slips along Blue Duck Road have been completed with the exception of some minor work which is awaiting materials.

RAMM SYSTEM UPGRADE

Maintenance of the RAMM system is ongoing and will be updated as more information becomes available.

TRAFFIC COUNTING PROGRAMME

The traffic counting programme for the year has commenced. Traffic counts for the month of January were on the following road:

- 1) Avoca Street

The traffic counts on Avoca Street have steadily increased from 2001 (1380 vehicles per day) to 2006 (2020 vehicles per day) with the exception of a slight dip in 2005 (1690 vehicles per day).

As requested, we will continue to forward copies of the traffic counts and speed matrices to the Kaikoura Police.

FOOTPATH UPGRADES

The contract has reached practical completion. Preparing and sealing a scheduled length of footpath on Avoca Street was completed in January. Care and maintenance of grass berms is ongoing with the Contractor waiting for favourable weather to re-sow areas of poor growth.

RESEALING 2005/2006

The work is programmed to start on Tuesday the 7th of February 2006 and be completed by Tuesday the 14th of February 2006. The section on Inland Road will be sealed first before moving into the township on Wednesday. The Contractor is T.C. Nicholls.

MAINTENANCE GRAVELLING 2005/2006

A list of the roads to be maintenance gravelled in the 2005/2006 financial year has been prepared and will be forwarded to the Contractor to carry out during March/April. The following roads are included:

1. Puhi Puhi Road - Between RP 5.1 and RP 10.1.
2. Blue Duck Road - Between RP 8.0 and RP 10.8.
3. Grange Road - 1.1km unsealed section.
4. Southern unsealed roads – Glencree Rd, Rakanui Rd, Valley Rd and Waitane Rd.
5. In addition to the above a light spread of maintenance gravel will be applied to other sections on Blue Duck Road following proposed surface water channel maintenance.

STOCK EFFLUENT ON COUNCIL ROADS

Further meetings with the individual landowners will continue over the coming months. Once all the landowners have been spoken to a report will be prepared for Council.

MOA POINT SEAWALL

Correspondence with Environment Canterbury to arrange a meeting has been problematic. It is hoped the meeting will take place next week so that the outstanding issues with the resource consent can be discussed. We have also now been advised, due to the original investigating officer leaving, that the consent is to be reviewed by an outside consultant.

STREET LIGHT UPGRADES

MainPower have commenced the lighting upgrades to Stage 3, being the area from Yarmouth Street to Deal Street to Ludstone Road. Work is also being carried out on the streets adjoining Beach Road.

Stage 4 will be confirmed following the completion of Stage 3 and is likely to include Upper Killarney Street and Scarborough Street. South Bay is the other area remaining.

BAYVIEW STREET UPGRADE

The contract has reached practical completion and the three month defects liability period is in affect. A site inspection on 18 January 2006 identified minor work still required by the Contractor. This includes completion of the planting beds and establishment of the grass berms.

ROAD MARKINGS

New road markings from the 04/05 contract, such as the Esplanade cyclelanes, will be remarked during the current financial year. Discussions are taking place with the previous contractor, Roadmarkers NZ Ltd, to undertake this work in the coming months.

As the previous contract in 04/05 was carried out in April 2005 it is not intended to carry out a full road marking programme until November / December 2006.

Infrastructure Works Timetable 2005/2006

Project	Awarded	Contractor	Start Date	Completed
Resealing 2005/2006	Yes	T.C. Nicholls	February 2006	-
Footpath Upgrading	Yes	Fulton Hogan	January 2005	Yes
Street Light Upgrades	Yes	MainPower	January 2005	-
Maintenance Gravelling	Yes	Works Infrastructure	April 2006	-
West End Redevelopment Stage I	Yes	Works Infrastructure	February 2004	Yes
Road Markings	Yes	Roadmarkers NZ Ltd	March 2006	-
Watermain Renewals 2005/2006	No	-		-
Sewage Treatment Upgrade	Yes	City Care Limited	February 2005	Yes
Moa Point Seawall	No	-	??	-
Bayview Street Upgrade	Yes	Works Infrastructure	September 2005	Yes
Peninsula Booster Pump Stn	Yes	Works Infrastructure	November 2005	-
New Water Source	Yes	Fulton Hogan	December 2005	-
Oxidation Pond Screen	Yes	Fulton Hogan	January 2006	-
Desludging of Oxidation Ponds	No	-	April 2006	-
Sewer Trunk Main (Stage 1)	Yes	BG Contracting Ltd	February 2006	-
Sewer Trunk Main (Stage 2)	No	-	March 2006	-

RECORD OF INSPECTION ROAD MAINTENANCE CONTRACT

RECORD OF INSPECTION

18 January 2006

1. Clarence Valley Road

- i) Requires grading. Last grade had reclaimed edges and reformed surface water channels. Regrowth occurring within widen areas needs to be cleared and road shape maintained with ongoing grading.
- ii) Grass cutting completed from SH1 to first cattlestop only.
- iii) Tree and shrub cutting not completed. Sapling to be removed from road edge and shrubs cut to specification. Particularly evident north of Matariki Road.
- iv) Remove weight restriction sign on fence at Glen Alton Bridge (remaining from old bridge)

2. Waiautoa Road

- i) Road and fords in acceptable condition.

3. Silver Springs Road

- i) Requires grading. Corrugations on hill sections. Last grade had reclaimed edges and reformed surface water channels. Regrowth occurring within widen areas and along centreline needs to be cleared and road shape maintained with ongoing grading.

4. Matariki Road

- i) Satisfactory condition.
- ii) Grass cutting completed

5. Waipapa Road

- i) Acceptable condition with exception of a few potholes.

6. Blue Duck

- ii) Requires grading to remove corrugations and tidy up road following recent maintenance work. Grass in centreline and along edges.
- iii) 1st and 2nd Slip repairs completed. 3rd slip repair still requires installation of permathene mat and revegetating, otherwise work has been completed.
- iv) Other requested work on road including culvert repairs and surface water channel work either completed or in progress. Further work to clear and shape surface water channels to be arranged over coming months.
- v) Tree and Shrub cutting to be done to specification. Attention to be given to saplings along road edge.

7. Kiwa Road

- i) Due for grading to prevent minor corrugations worsening.

8. Puhi Puhi Road

- i) Grading completed from SH1 to picnic area. Grading required over remainder of road. Potholes and corrugations.
- ii) Water running along road south of Jordans bridge. Grading to shape and form surface water channel to prevent further scouring.
- iii) Slip around bluffs just past reserve. Work to mono-camber road not done. Surface water channel along bluff has been cleared.
- iv) Tree and Shrub cutting to be done to specification. Attention to be given to saplings along road edge.

9. Old Beach Road

- i) Good condition.
- ii) Grass cutting completed. Low branches evident along north section, tree and shrub cutting to be done as specified in contract.

10. Hapuku Settlement / Factory Road

- i) Satisfactory condition. Works to provide price schedule for raising of low area.

11. Factory Road

- i) Satisfactory condition. Some corrugations on downhill section. Grass mowing completed.

12. Skevingtons Road

- i) Satisfactory condition. Grass mowing completed.

13. Harnetts Road / Wilderness Road

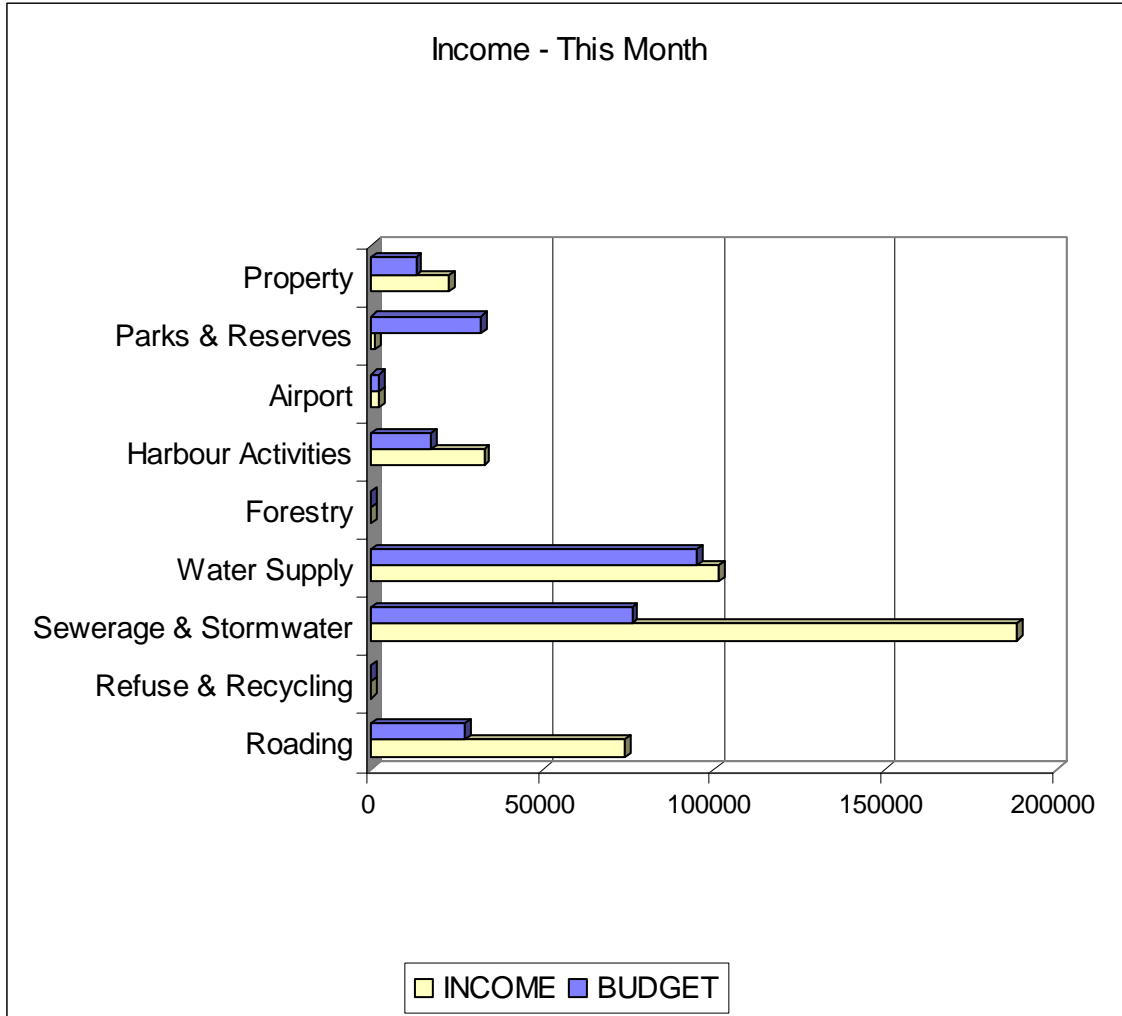
- i) Satisfactory condition. Grass mowing completed.

Note

It is the Contractor's responsibility to check all roads to confirm that grass, tree and shrub cutting has been completed to the required standard as per the specification.

The date of the next road inspection is 1 February 2006.

Works & Services Budget Report



Expenditure - This Month

