

**KAIKOURA DISTRICT COUNCIL WORKS AND SERVICES COMMITTEE
MEETING HELD AT 9.00AM ON WEDNESDAY 15 MARCH 2006 IN
MEMORIAL HALL SUPPER ROOM, ESPLANADE, KAIKOURA.**

AGENDA

1. Apologies

2. Matters of Importance to be raised as Urgent Business.

3. Matters Arising from Report of 15/02/2006

page 84

4. Minutes Action and Issues List Update

MEETING	ACTION REQUIRED	BY	DATE ACTIONED
	18 MAY 2005		
Works	Meeting with local farmers re stock effluent	Murray	In Progress
	16 NOVEMBER 2005		
Works & Services	Seal 345m section of Old Beach Road.	Gallo/M Fletcher	In Progress
	21 DECEMBER 2005		
Works & Services	Investigate wireless closed circuit camera system	Councillor Macphail	In Progress
Works & Services	Arrange meeting with Works Infrastructure South Island Manager and Kaikoura Works Infrastructure regarding roading contract and work in general	M Fletcher Councillors Pablecheque and Seddon	In Progress
Works & Services	Place Traffic Counter on Hawthorne Road (Beach end) outside St John on yearly basis	M Fletcher	In Progress
Works & Services	Pursue all funding avenues for Lyell Creek Bridge	Gallo / M Fletcher/ Council	In Progress
Works	Signage on rubbish bins advising where recycle bins/stations are	Nicole	In Progress
Works	Check condition of inside of Jimmy Armers toilet facility	Marlene	In Progress
	15 FEBRUARY 2006		
Works & Services	Supply list of trucking companies responsible for damaging seal at corner of Ludstone/Red Swamp Roads to Chief Executive Officer	Councillor Woods	In Progress

Works & Services	Criteria for swale drainage and maintenance of shingle roads	M Fletcher	In Progress
Works & Services	Re-sow grass berms in Bayview, Torquay and Yarmouth Streets	M Fletcher	In Progress

5. Reports:

- **Works and Services Report** *page 1*
- **Roading Report** *page 5*
- **Works and Services Budget Report** *page 16*

6. Urgent Business

WORKS & SERVICES REPORTS

WATER SUPPLY

Urban Water

Operations

During the Month of February two major problems were encountered with the water supply system.

Both the chlorination and the flow meter at the Brunnels road shed malfunctioned during the month. The other major issue was the constant low pressure or no water complaint in the Scarborough Street area. During this period it was mainly the residents on Maui Street that were affected.

Water Demand

During the month of February 2006 we continued to operate the alternate bore to supplement the water demand of the township. The graph below shows only the total supply from the Waimangarara however, the table below gives a break down of the total water supplied from the system for the period February 1-28, 2006. The total demand for the chlorine shed is an estimate based on the readings before the meter malfunctioned and after the meter was repaired.

Dates	Demand –Chlorine shed (m ³)	Demand – Alternate Bore (m ³)	Total Demand (m ³)	Average Demand (m ³ /day)
Feb, 2006	75460	43,000	118460	4230.7

New Water Source

The majority of the works for this system has now been completed. A trial run of the system is now scheduled for 13th March 2006.

The construction of the booster pumping station at the Fords Reservoir is 99% complete with the testing and commissioning to be also conducted on the 13th March 2006.

Kincaid Water Supply

There has been no major malfunction at the Kincaid system during the reporting month.

SEWER SYSTEM

Urban Reticulation

The sewage flow averaged 1979.4m³/day during the Month of February. The maximum flow recorded was 2150 m³ /day on the 12th of February, the outflow at the pond pumping station showed an average outflow of 1994 m³/day.

The measured Dissolved Oxygen continues to meet the resource consent conditions averaging 3.5mg/l.

During the week February 13-17th the pond deviated from its intended mode of operation creating odour in the neighbouring community. As a short term corrective measure, lime was added to the pond which helped restore the system to its normal function.

Since realizing the effects that the dumping of septage is having on the system we have asked the persons carrying out this activity to provide us with some information regarding volume and source of their

septage. For the month of February it was reported that approximately 10.5m³ of septage was dumped in the system.

STORMWATER

Urban Stormwater

There have been no major operational problems during this period.

PARKS & RESERVES

The maintenance to these assets continues with no major problems during the reporting month.

PUBLIC TOILETS

The facilities are being fairly maintained.

LYELL CREEK FOOTBRIDGE

Since recommending the type of footbridge that is required for the Amphitheatre/Lyell Creek area, we are now in the process of preparing the contract documents for tendering. In addition to this, we have also communicated with the Business Discussion Group who have indicated that they would prefer to have the timber hand rails; this will be incorporated into the final design.

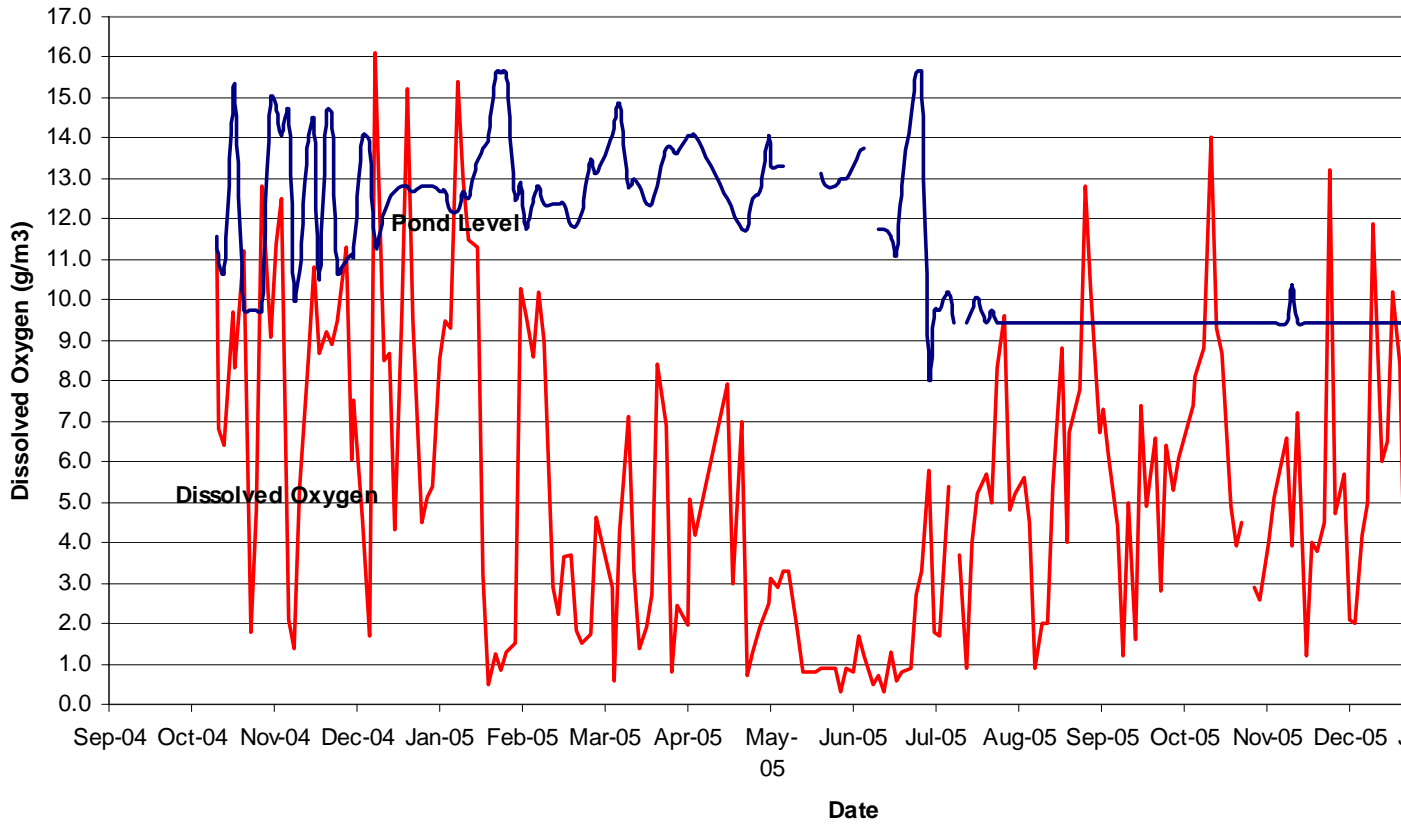
STATE HIGHWAY/WEST END INTERSESECTION

Work at the intersection progressed smoothly during February 27 through to March 3 and did not take the 3 weeks that was originally anticipated.

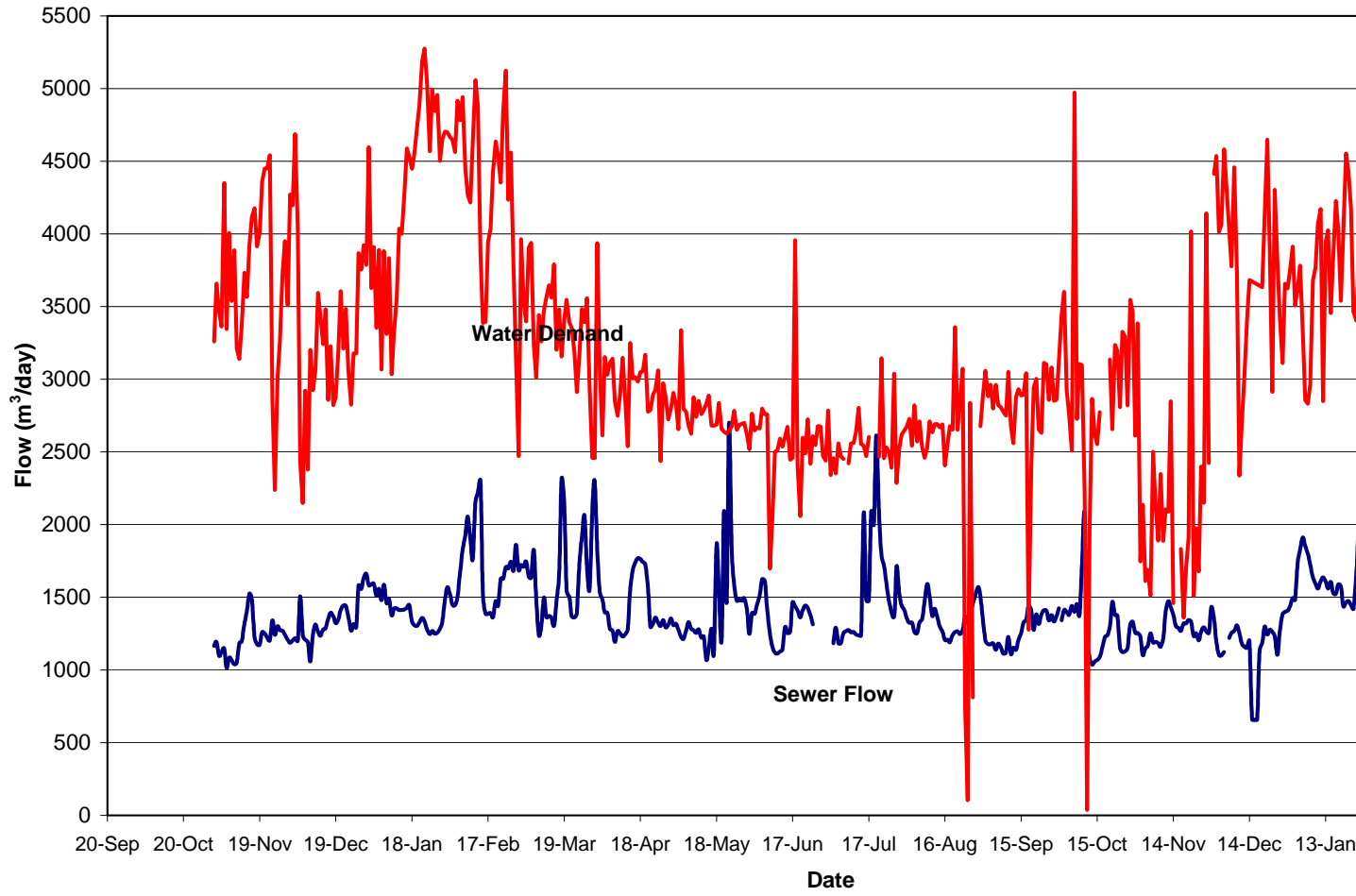
OTHER

Work continues on the processing of resource consents.

**Kaikoura Oxidation Pond
DO & Water Levels
(Sept 2004 to February 2006)**



**Water Demands & Sewer Flows
(October 2004 -February 2006)**



ROADING REPORT

LAND TRANSPORT PROGRAMMES/RECORDS

Returns and information are being supplied to Transfund New Zealand as requested.

Kaikoura's 2006/2007 Land Transport Programme has been submitted to Transfund. The programme currently submitted in draft status will be reviewed and resubmitted as a final programme this month.

ROUTINE ROAD AND BRIDGE INSPECTIONS

Routine road and bridge inspections are continuing with the roads in the southern area inspected on 8 February 2006 and roads in the northern area inspected on 1 March 2006. (Copies of the record of inspection are attached.)

The southern roads were generally in satisfactory condition however the roads on the flat including Postmans and Mt Fyffe were found to be corrugated and in need of grading. Other general repairs were noted such as edge break along Inland Road.

Grading was in operation on the northern roads and as such were for the most part found to be in good condition. Clearing out of the surface water channels along Blue Duck Road was scheduled up and past to the contractor to carry out during the next fortnight.

RAMM SYSTEM UPGRADE

Maintenance of the RAMM system is ongoing and will be updated as more information becomes available.

TRAFFIC COUNTING PROGRAMME

Traffic counts for the month of February include the following roads:

- 1) Bay Paddock Road
- 2) Mount Fyffe Road (at the bore)

The traffic counts on Bay Paddock Road were higher than all years on record with the exception of 2004 where 150 vehicles per day was recorded (130 vehicles per day in 2006).

The traffic counts on Mount Fyffe Road at the bore had increased slightly from previous years to 230 vehicles per day (200 and 220 vehicles per day from 2000 to 2005).

As requested, we will continue to forward copies of the traffic counts and speed matrices to the Kaikoura Police.

FOOTPATH UPGRADES

The defects liability period for the contract is now over. The Contractor has been working through a list of maintenance items recorded during the last inspection. A final overall inspection will be carried out next week.

RESEALING 2005/2006

Resealing works were carried out during the second week of February. The majority of sealing was completed in warm, dry conditions before wet weather over two days delayed the completion of the work.

MAINTENANCE GRAVELLING 2005/2006

A list of the roads to be maintenance gravelled in the 2005/2006 financial year has been forwarded to the Contractor to carry out during April. The following roads are included:

1. Puhi Puhi Road - Between RP 5.1 and RP 10.1.
2. Blue Duck Road - Between RP 8.0 and RP 10.8.
3. Grange Road - 1.1km unsealed section.
4. Chapmans Road including Postmans Road corner
5. In addition to the above a light spread of maintenance gravel will be applied to other sections on Blue Duck Road following the surface water channel maintenance.

STOCK EFFLUENT ON COUNCIL ROADS

Further meetings with the individual landowners will continue over the coming months. Once all the landowners have been spoken to a report will be prepared for Council.

MOA POINT SEAWALL

Environment Canterbury has now been supplied with all requested additional information for the resource consent. We now await their decision as to whether the consent is to be notified or non-notified.

STREET LIGHT UPGRADES

MainPower are underway with the lighting upgrades to Stage 3, being the area from Yarmouth Street to Deal Street to Ludstone Road.

Stage 4 will be confirmed following the completion of Stage 3 and is likely to include Upper Killarney Street and Scarborough Street. South Bay is the other area remaining.

BAYVIEW STREET UPGRADE

The contract is in the three month defects liability period. The contractor is still to complete outstanding work noted in a January inspection. This includes completion of the planting beds by installing timber battens along the back and removing the weeds. When this is completed Council staff will be informed so that the planting beds can be landscaped.

ROAD MARKINGS

Roadmarkers NZ Ltd will carry out remarking of the Esplanade cyclelanes and other new markings in the coming months. Other markings in the area that have badly faded or are otherwise required can also be remarked as part of the work.

As the previous contract in 04/05 was carried out in April 2005 it is not intended to carry out a full road marking programme until November / December 2006.

**Infrastructure Works Timetable
2005/2006**

Project	Awarded	Contractor	Start Date	Completed
Resealing 2005/2006	Yes	T.C. Nicholls	February 2006	Yes
Footpath Upgrading	Yes	Fulton Hogan	January 2005	Yes
Street Light Upgrades	Yes	MainPower	January 2005	-
Maintenance Gravelling	Yes	Works Infrastructure	April 2006	-
West End Redevelopment Stage I	Yes	Works Infrastructure	February 2004	Yes
Road Markings	Yes	Roadmarkers NZ Ltd	March 2006	-
Watermain Renewals 2005/2006	No	-		-
Sewage Treatment Upgrade	Yes	City Care Limited	February 2005	Yes
Moa Point Seawall	No	-	??	-
Bayview Street Upgrade	Yes	Works Infrastructure	September 2005	Yes
Peninsula Booster Pump Stn	Yes	Works Infrastructure	November 2005	-
New Water Source	Yes	Fulton Hogan	December 2005	-
Oxidation Pond Screen	Yes	Fulton Hogan	March 2006	-
Desludging of Oxidation Ponds	No	-	May 2006	-
Sewer Trunk Main (Stage 1)	Yes	BG Contracting Ltd	February 2006	-
Sewer Trunk Main (Stage 2)	No	-	March 2006	-

**RECORD OF INSPECTION
ROAD MAINTENANCE CONTRACT**

RECORD OF INSPECTION

8 February 2006

1. Birches Road

i) Satisfactory condition, vegetation in centreline otherwise little deterioration since last grade.

2. Glencree Road

ii) Pothole repairs required, particularly at bridge ends. Maintenance gravelling this financial year.

3. Oaro M

iii) Sweep loose gravel from stockpile area off road.

4. Waitane Road

iv) Pothole repairs required at start of unsealed section.

5. Moana Road

v) Good condition.

6. Valley Road

vi) Potholes repairs required. Maintenance gravelling this financial year.

7. Peketa Road

vii) Chip sealing of road completed and to a good standard.

8. Inland Road

viii) Bridge end marker missing on Greenburn bridge (B&W, east side).

ix) Edgebreak repairs to be identified and marked up by Contractor. Edgebreak noted at Little Linton bridge and several other locations, generally in hill sections past RS/16 marker.

x) Tree and Shrub cutting requires further work to remove branches and shrubs overhanging road.

9. Scotts Road

xi) Minor corrugations on hill section.

xii) Shrub cutting requires further work to meet specified standard.

10. Blunts Road

xiii) Road in satisfactory condition.

xiv) Low branches overhanging road need cutting.

11. Dairy Farm Road

- xv) Grading needs to extend into road edges. Extensive grass growth within width previously graded.
- xvi) Hill section corrugated and grading needed on road beyond bridge.
- xvii) Dropout of road edge at culvert on steep hill section. Culvert pipe to be extended to allow for reinstatement of road edge using concrete bags if necessary. Contractor to provide price.

12. Kowhai Ford Road

- xviii) Requires grading. Badly corrugated and potholed, likely due to heavy vehicles.

13. Red Swamp Road

- xix) Loose metal on road at vehicle crossing into silo near Schoolhouse Road. Apparent increase in vehicles using entrance. Contractor to provide price for sealing of vehicle crossing.
- xx) Unsealed section in satisfactory condition.

14. Schoolhouse Road

- xxi) Unsealed section satisfactory. Low branches and shrubs overhanging road need cutting.

15. Postmans Road / Chapmans Road

- xxii) Unsealed section requires grading. Heavily corrugated and potholed. Repair potholes at bridge approaches. Chapmans Road could warrant maintenance gravelling.
- xxiii) Low shrub needs cutting at end of seal.

16. McInnes Road

- xxiv) Generally road is in a satisfactory condition, however scouring and loss of shape over first two hundred metres. Investigate installation of surface water channels over initial section to prevent this.

17. Mt Fyffe Road

- xxv) Unsealed section requires grading to repair corrugations and scouring.
- xxvi) Removal of high shoulder or cutouts and possible surface water channel work to be carried out to prevent scouring and repeat of last years storm damage.

18. Pooles Road / Topline Road

- xxvii) Some corrugations, to be graded at same time as Mt Fyffe Road.

19. Burrells Lane

- xxviii) Grading required. Grass cutting required.

20. Scarborough Street

- xxix) Reinstate westbound 50km/hr sign near walkway.

21. Rorrisons Road

- xxx) Giveway sign knocked over at Ludstone Road intersection.

RECORD OF INSPECTION

1 March 2006

1 Kekerengu Valley Road / Wiffens Road

xxx) Road requires grading. Potholes, corrugations. Noted grader currently in operation in Kekerengu area.

2 East Lane

i) Road requires grading. Potholes, corrugations. Noted grader currently in operation in Kekerengu area.

3 Ellerton-Valhalla Road

i) Grading in progress. Edges to be reclaimed.

ii) Request price for dropout repair at culvert no.10. To be priced in conjunction with other work in area.

22. Clarence Valley Road

i) Recently graded. Previous grade had reclaimed edges and reformed surface water channels. This recent grade has covered main roadway but not the widened areas where regrowth is occurring. Contractor to ensure that next grade on this road covers full road width.

23. Matariki Road

ii) Satisfactory condition.

24. Waipapa Road

i) Recently graded. Grading has created high windrows along road edge particularly at end near Limeworks. Grading to ensure windrows are removed before leaving area so that runoff of surface water is not hindered.

25. Blue Duck

i) Satisfactory condition.

ii) Lengths and locations of surface water channels to be cleared noted and supplied to Contractor. Clearing to be carried out using excavator and truck.

26. Kiwa Road

i) Corrugations, mostly minor. Length from SH1 to first corner looking bare. Grading will be required when dry weather ends.

27. Puhi Puhi Road RP 0.0 to RP 6.0

i) Some corrugations over first few kilometres. Remaining road generally in satisfactory condition following recent grade.

ii) Maintenance gravelling programmed from RP 5.15 to RP 10.08.

28. Old Beach Road

- i) Unsealed sections corrugated and require grading.
- ii) South of Factory Road – Existing concrete upstand to be secured to box culvert by drilling in steel rods and placing on new concrete base.
- iii) Bridge end markers (x4) to be installed either side of culvert under road near rail crossing (Factory Rd).

29. Hapuku Settlement / Factory Road

- i) Satisfactory condition. Raising of low area to be carried out.

30. Parsons Road

- i) Low shoulder resulting in minor edgebreak. Consider placing make up metal along road edges.

31. Grange Road

- i) Unsealed section programmed for maintenance gravelling. Currently bare with some potholes and corrugations.

32. Wilderness Road

- i) Wilderness has minor corrugations and loss of shape in wheel tracks.

33. Harnetts Road

- i) Edgebreak near intersection with Beach Road

34. Esplanade (Avoca Street)

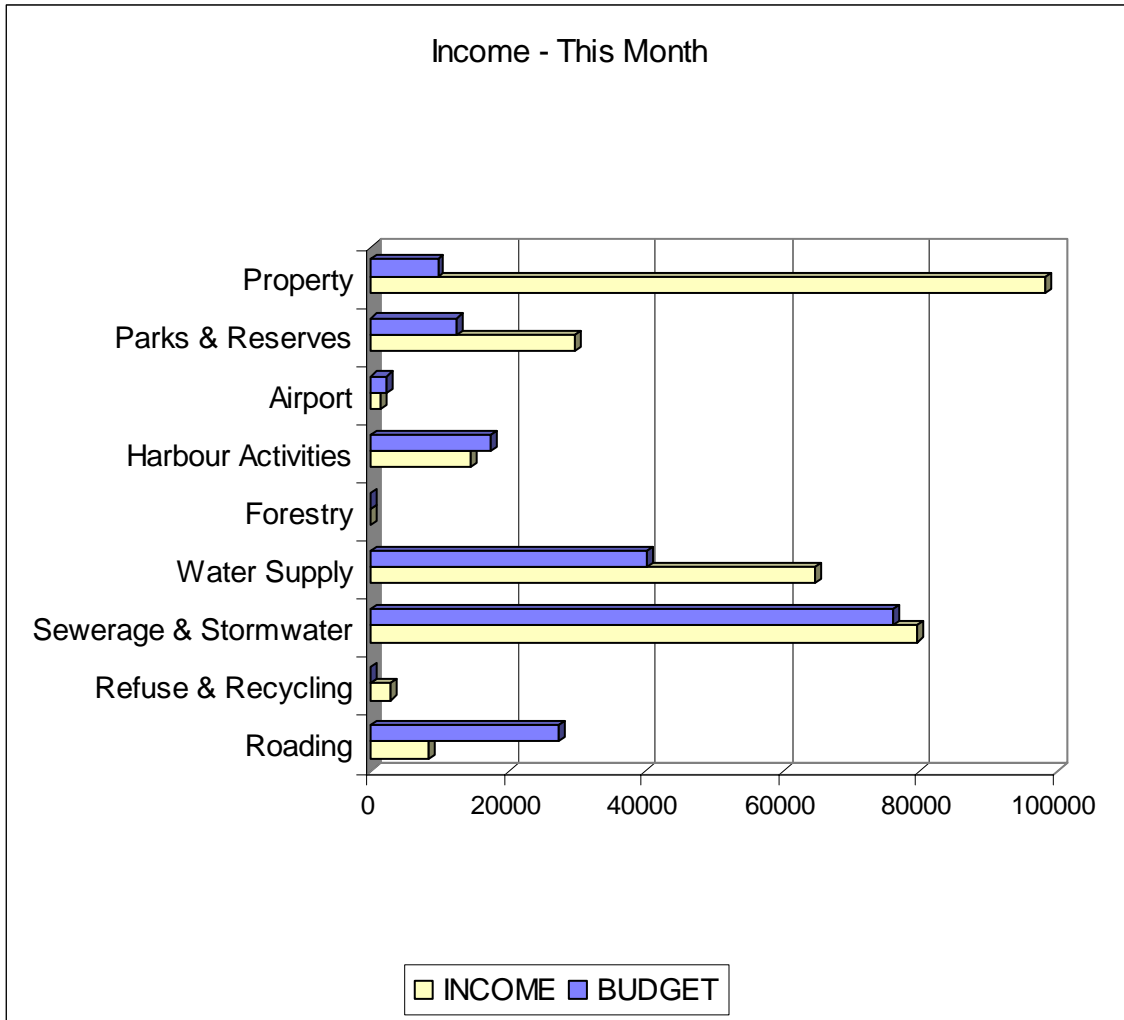
- ii) Edgebreak / pothole in seal edge near Fyffe House corner.

Note

It is the Contractor's responsibility to check all roads to confirm that grass, tree and shrub cutting has been completed to the required standard as per the specification.

The date of the next road inspection is 5 April 2006.

WORKS & SERVICES BUDGET REPORT



Expenditure - This Month

