

**KAIKOURA DISTRICT COUNCIL WORKS AND SERVICES
COMMITTEE MEETING HELD AT 9.00AM ON WEDNESDAY 17
MAY 2006 IN MEMORIAL HALL SUPPER ROOM, ESPLANADE,
KAIKOURA.**

AGENDA

1. Apologies

2. Matters of Importance to be raised as Urgent Business.

3. Matters Arising from Report of 20/04/06

page 66

4. Minutes Action and Issues List Update

MEETING	ACTION REQUIRED	BY	DATE ACTIONED
	18 MAY 2005		
Works	Meeting with local farmers re stock effluent	M Fletcher	In Progress
	21 DECEMBER 2005		
Works & Services	Pursue all funding avenues for Lyell Creek Bridge	Council	In Progress
	15 MARCH 2006		
Works & Services	Install closed circuit cameras near West End Toilet Facility.	Marlene	See Report
Works & Services	Inspect Chapmans/Postmans Roads following complaints re gravelling	M Fletcher	In Progress
Works & Services	Arrange meeting with Works Infrastructure South Island Manager and Kaikoura Works Infrastructure, along with Councillors Pablecheque and Seddon regarding roading contract and work in general and report back to April Works meeting.	M Fletcher	In Progress
	20 APRIL 2006		
Works	Look into upgrading inside of Jimmy Armers toilet facility	Marlene	In Progress
Works	Carry out further investigations on Middle Creek Bridge	Gallo/M Fletcher	In Progress
Works	Instruct Transit to stop any further works on the West End/State Highway 1 Intersection	Gallo	Transit advised
Works	Ask Murray Fletcher about road markings	Mayor	In Progress

	in Scarborough Street following resealing.		
Works	Provide report on grading and rutting relating to shingle roads north of Postmans Road to chlorine shed.	M Fletcher	In Progress

5. Reports:

- **Works and Services Report** *page 1*
- **Roading Report** *page 5*
- **Works and Services Budget Report** *page 16*

6. South Bay Traffic Speeds *page 18*

Attached is a letter from the South Bay Ratepayers & Residents Association outlining their concerns at the speed of traffic at South Bay.

Mr P Turner will be present at 9.30am to speak to Council on behalf of the association regarding this matter.

7. West End/State Highway 1 Intersection *page 19*

Motion to rescind the Council resolution of 21 December 2005 which states that Council “approve Transit New Zealand’s State Highway 1/West End intersection concept for a trial period”.

8. Davidson Terrace Walkway *page 23*

9. Urgent Business

Works & Services Report

WATER SUPPLY

Urban Water

Operations

The chlorination system located at Brunnels Road malfunctioned on the 5th of April however this was corrected and put back in service the same day.

Water Demand

Between the 27th and the 29th April Kaikoura experienced heavy rains which resulted in high turbidity levels of the water supply from the Waimangarara source. As a result, the town's water supply was solely sourced from the alternate bore from 28 April to 30 April when the turbidity levels returned to normal. During this time residents were asked to conserve water as the alternate bore can only supply at a reduced rate.

In general, the demand for the period is decreasing when compared to the previous month. The average demand for April was 3081.75m³/day whereas for March it was 3442m³/day.

The graph below shows only the total supply from the Waimangarara however, the table below gives a break down of the total water supplied from the system for the period April 1- 30, 2006.

Dates	Demand –Chlorine shed (m ³)	Demand – Alternate Bore (m ³)	Total Demand (m ³)	Average Demand (m ³ /day)
April, 2006	87468	4984.36	92452.36	3081.75

New Water Source

Work on the new source is still ongoing. There has been a set-back in the works however these issues are in the process of been resolved.

The new booster pumping station at the Fords reservoir and upgraded telemetry control is now commissioned and operational.

Kincaid Water Supply

Apart from the effect of the high turbidity levels between the 28th and 30th of April there were no major malfunctions with the Kincaid system during the reporting month.

SEWER SYSTEM

Urban Reticulation

The sewage flow averaged 1703.35.6m³/day during the Month of April. The maximum flow recorded was 2395 m³ /day on the 28th of April, when it rained heavily for most of the day. The outflow at the pond pumping station showed an average of 1760 m³/day with a maximum of 2991m³/day, this high volume is attributable to the continuous rains over the weekend of April 27-30th

The measured Dissolved Oxygen continues to meet the resource consent conditions averaging 3.0mg/l.

STORMWATER

Urban Stormwater

Despite the heavy rains there was no major problem with the stormwater system for the reporting month.

PARKS & RESERVES

The maintenance of these assets continues however, there were some set backs in the schedule as a result of the number of wet days experienced in the month.

PUBLIC TOILETS

The facilities are being fairly maintained. There has been a set back regarding the camera installation for the West End facility as the cabinets have not yet been received from the vendor in Christchurch.

The toilet facility at the Northern Entrance has still not been connected however it is hoped to be connected by the end of May. The Contractor has however been informed to proceed with getting the facility operational.

LYELL CREEK FOOTBRIDGE

The contract for the construction of the bridge has been awarded to Works Infrastructure being the only company that submitted a bid. The total bid price for the tendered works is \$64,225.98 excluding GST.

An application for resource consent has been lodged with Environment Canterbury and we are awaiting their response. The building consent has been received.

Construction works is scheduled to start by the end of May 2006.

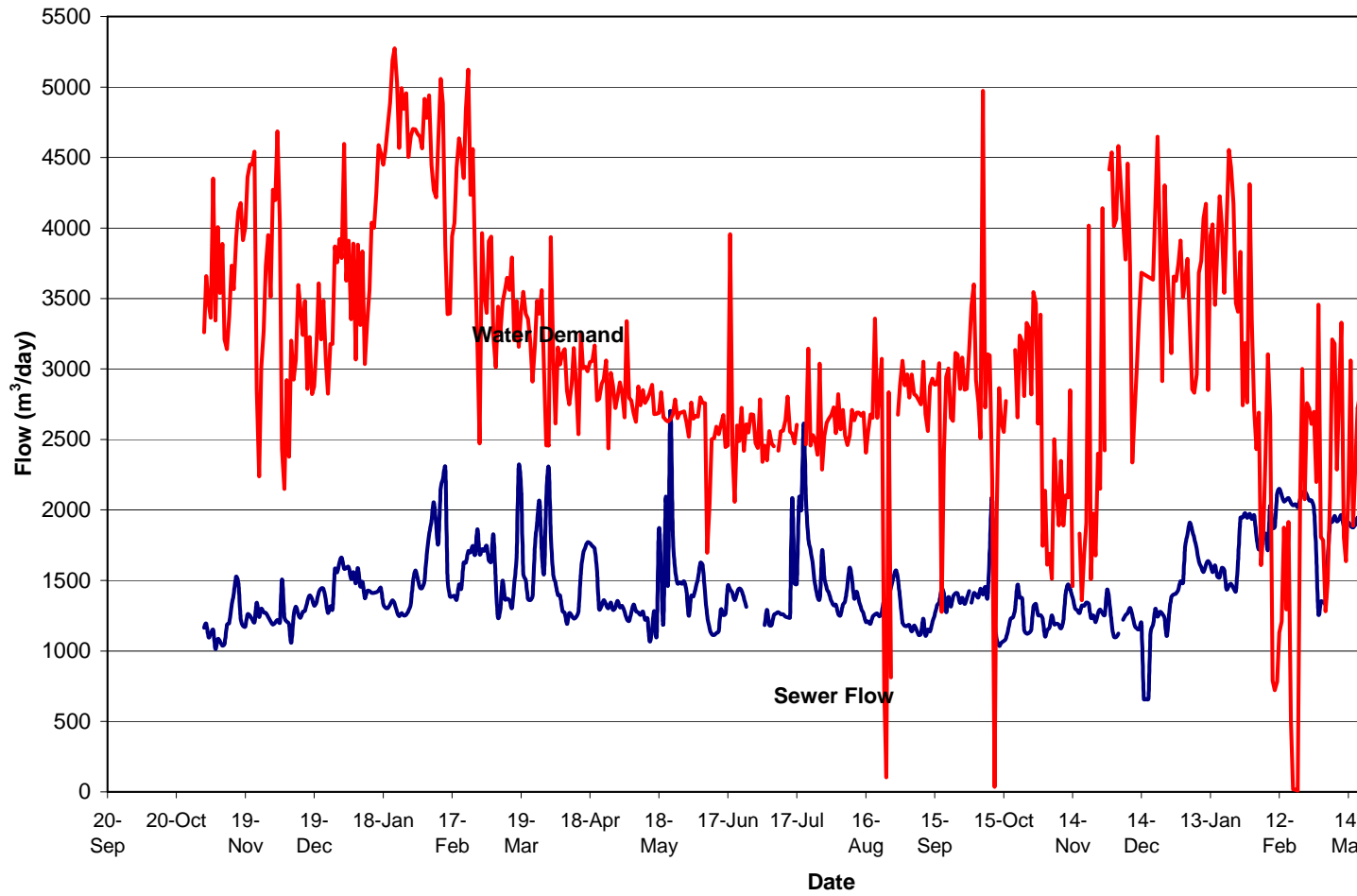
STATE HIGHWAY 1/WEST END INTERSECTION

Transit has been notified to suspend the removal of the car parks. Transit has since responded that they have instructed their contractor to terminate the works as they are no longer going to finance or be involved in the completion of the works

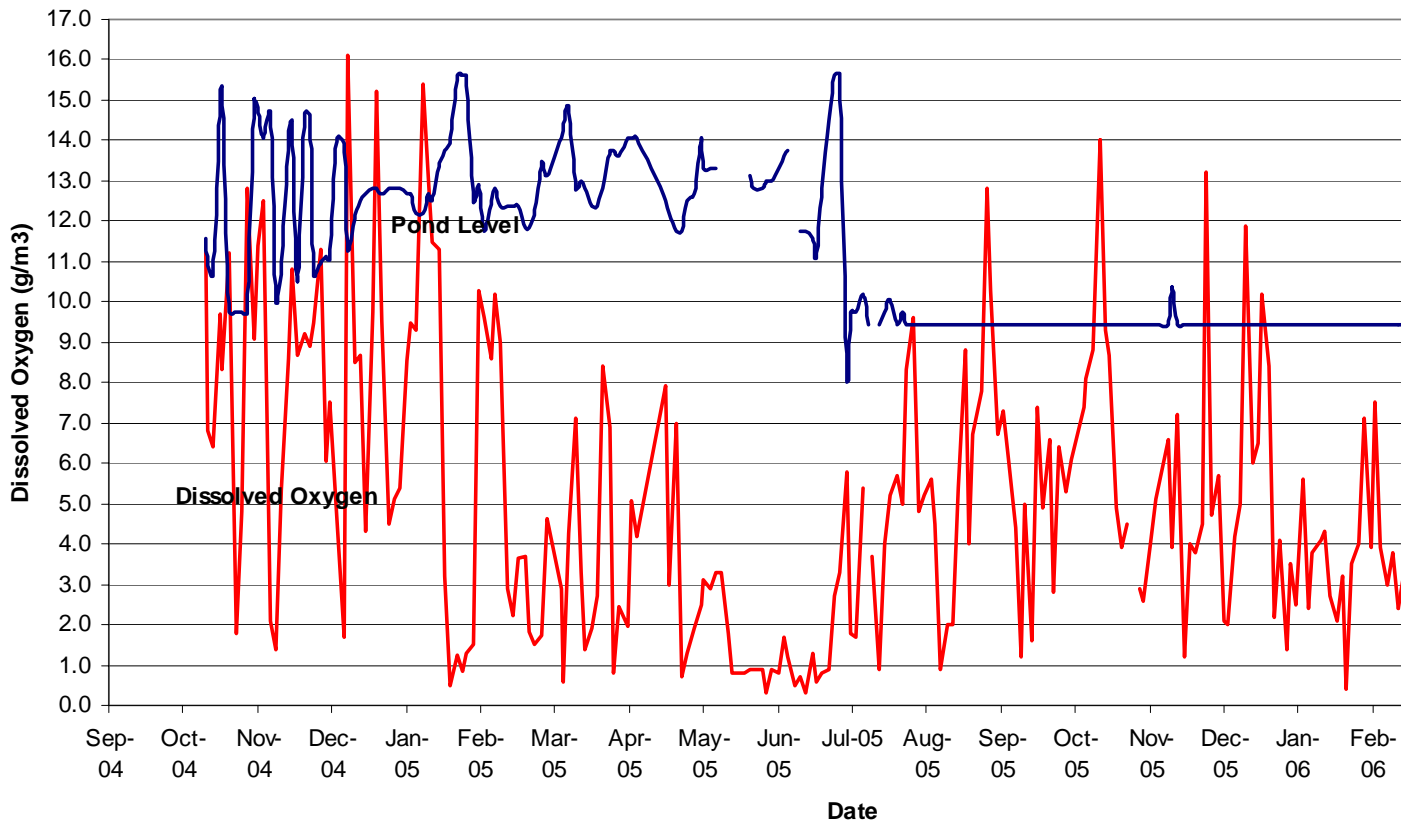
OTHER

Work continues on the processing of resource consents.

**Water Demands & Sewer Flows
(October 2004 - April 2006)**



**Kaikoura Oxidation Pond
DO & Water Levels
(Sept 2004 to April 2006)**



Roading Report

LAND TRANSPORT PROGRAMMES/RECORDS

Returns and information are being supplied to Transfund New Zealand as requested.

The Middle Creek Bridge Replacement submission has been placed as a draft. Further investigation is now required into replacement options that will meet the funding criteria.

ROUTINE ROAD AND BRIDGE INSPECTIONS

Routine road and bridge inspections are continuing with the roads in the northern area inspected on 4 May 2006. (Copies of the record of inspection are attached.)

The majority of the northern roads required grading with the grader currently in operation on Blue Duck Road. It is planned for the grading to continue on roads due for maintenance gravelling as listed below under Maintenance Gravelling.

RAMM SYSTEM UPGRADE

Maintenance of the RAMM system is ongoing and will be updated as more information becomes available.

TRAFFIC COUNTING PROGRAMME

Traffic counts for the month of April include the following roads:

- 1) Harnetts Road
- 2) Clarence Valley Road
- 3) Inland Road (State Highway 1 end)

The traffic counts on Harnetts Road were lower than the previous two years at 80 vehicles per day. Counts over the last 6 years show fluctuations within a relatively small range of 60 to 120 vehicles per day.

The traffic counts on Clarence Valley Road have remained virtually unchanged since the counts began in 2001 (60-70 vehicles per day).

The traffic counts on the Inland Road were higher than the previous two years and the second highest since records began in 2001 (470 vehicles per day). This has resulted in an overall positive growth rate of +1.50%, (-1.30% in 2005).

We are forwarding copies of the traffic counts and speed matrices to the Kaikoura Police.

FOOTPATH UPGRADES

A number of maintenance items are still required to be completed by the Contractor before the contract can be finalised and retentions released. These include tidying up of grass berms, sweeping of all chip sealed footpaths and repairing areas of slumped road reinstatement adjacent to the new kerb and channel on Ludstone Road.

RESEALING 2005/2006

The three month defects liability period ends on the 17th of May 2006. A final inspection will be carried out following this date and retentions released.

MAINTENANCE GRAVELLING 2005/2006

A list of the roads to be maintenance gravelled in the 2005/2006 financial year has been forwarded to the Contractor to carry out this month. The following roads are included:

1. Puhi Puhi Road - Between RP 5.1 and RP 10.1.
2. Blue Duck Road - Between RP 8.0 and RP 10.8.
3. Grange Road - 1.1km unsealed section.
4. Chapmans Road
5. Postmans Road – End of seal to Chapmans Road (follows work to raise low area)

STOCK EFFLUENT ON COUNCIL ROADS

Further meetings with the individual landowners will continue over the coming months. Once all the landowners have been spoken to a report will be prepared for Council.

MOA POINT SEAWALL

Affected parties have voiced their opposition to the seawall. As a result we have approached ECan to explore the possibility of a limited notifiable consent and are now awaiting their reply.

STREET LIGHT UPGRADES

A site meeting with MainPower is being arranged to finalise the lighting for Stage 4. This will include installation of underground cable and new lighting columns along Upper Killarney Street and new lighting on Scarborough Street.

BAYVIEW STREET UPGRADE

The Contractor is currently working through the list of maintenance items. A final inspection will then be conducted and retentions released.

ROAD MARKINGS

Roadmarkers NZ Ltd have stated that they will carry out remarking of the Esplanade cyclelanes and other requested areas within the next few weeks.

As the previous contract in 04/05 was carried out in April 2005 it is not intended to carry out a full road marking programme until November / December 2006.

**Infrastructure Works Timetable
2005/2006**

Project	Awarded	Contractor	Start Date	Completed
Resealing 2005/2006	Yes	T.C. Nicholls	February 2006	Yes
Footpath Upgrading	Yes	Fulton Hogan	January 2005	Yes
Street Light Upgrades	Yes	MainPower	January 2005	-
Maintenance Gravelling	Yes	Works Infrastructure	May 2006	-
West End Redevelopment Stage I	Yes	Works Infrastructure	February 2004	Yes
Road Markings	Yes	Roadmarkers NZ Ltd	May 2006	-
Watermain Renewals 2005/2006	No	-	May 2006	-
Sewage Treatment Upgrade	Yes	City Care Limited	February 2005	Yes
Moa Point Seawall	No	-	??	-
Bayview Street Upgrade	Yes	Works Infrastructure	September 2005	Yes
Peninsula Booster Pump Stn	Yes	Works Infrastructure	November 2005	-
New Water Source	Yes	Fulton Hogan	December 2005	-
Oxidation Pond Screen	Yes	Fulton Hogan	May 2006	-
Desludging of Oxidation Ponds	No	-	May 2006	-
Sewer Trunk Main (Stage 1)	Yes	BG Contracting Ltd	February 2006	-
Sewer Trunk Main (Stage 2)	No	-	June 2006	-

**RECORD OF INSPECTION
ROAD MAINTENANCE CONTRACT**

**RECORD OF INSPECTION
4 May 2006**

1. Kekerengu Area

- i) Roads to be inspected in conjunction with bridge inspections later this month.

2. Clarence Valley Road

- i) Requires grading. Potholes, corrugations and some scouring on hill section evident. Next grade must extend out into shoulder / channel where grass regrowth is occurring.
- ii) Level approach to cattlestop installed last year.

3. Silver Springs Road

- i) Requires grading. Potholes, corrugations. Next grade must extend out into shoulder / channel where grass regrowth is occurring.

4. Matariki Road

- ii) Requires grading. Loss of shape in wheel tracks and some potholes.

5. Waipapa Road

- i) Warrants grading. Some potholes.

6. Blue Duck

- i) Grader currently in operation. Windrows and loose clumps yet to be tidied up over end section.
- ii) Noticeable improvement to road following cleaning out of scheduled sections of surface water channels. Further work to other sections can be looked at a later date.
- iii) Maintenance gravelling programmed from RP 8.0 to end.

7. Kiwa Road

- i) Corrugations developing.

8. Puhi Puhi Road RP 0.0 to RP 6.0

- i) Requires grading. Potholes and scouring.
- ii) Repair potholes at Puhi Puhi #1 bridge ends.
- iii) RG-20 signs (priority arrow) at both approaches to Puhi Puhi #1 one lane bridge. RG-20 on south approach to be replaced with RG-19 sign.

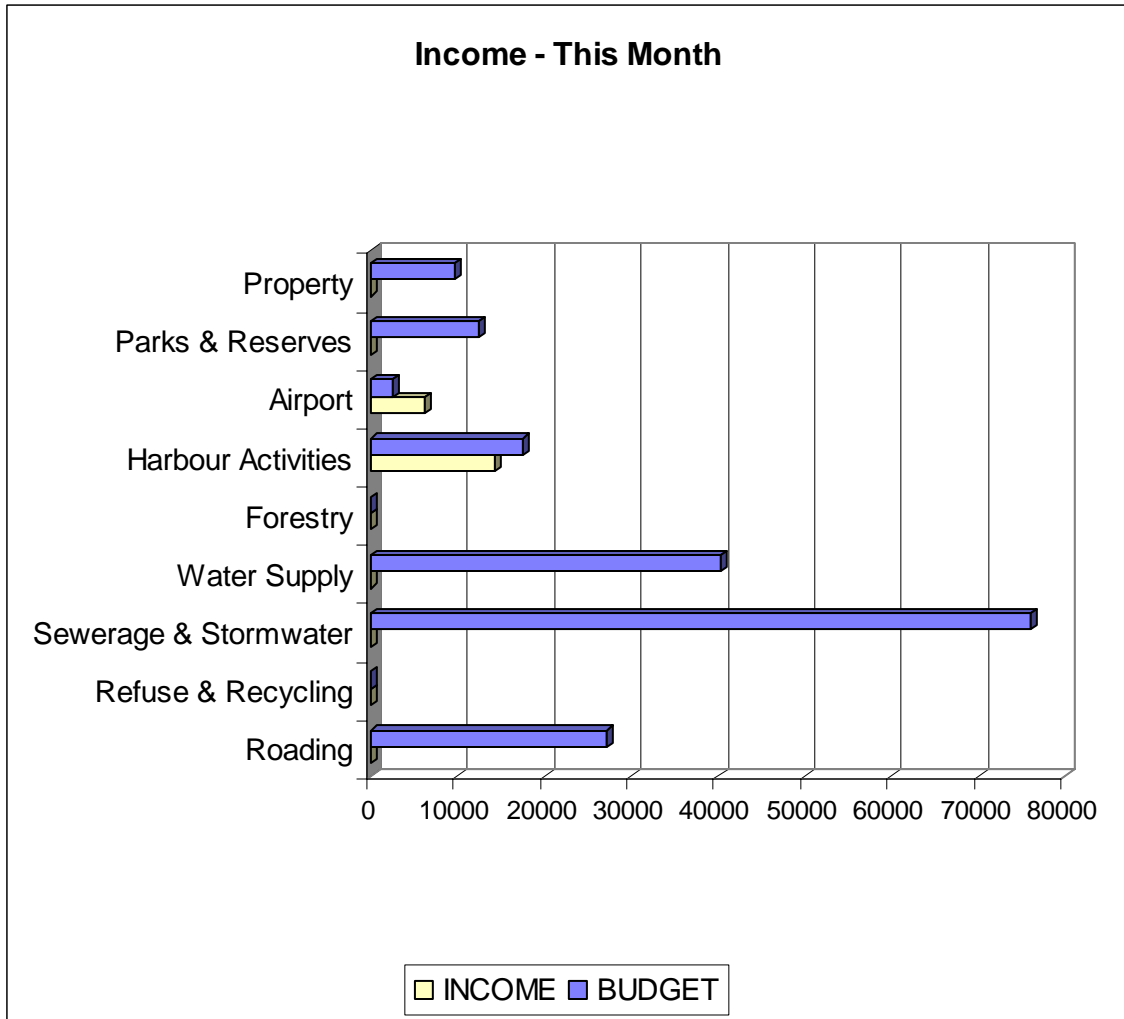
- iv) Reduced shoulder adjacent to river on RHS prior to small fords. Edge marker posts to be installed around corner within wider areas.
- v) Jordan Ford impassable and needs reopening. Approaches to bridge have been reinstated.
- vi) Maintenance gravelling programmed from RP 5.15 to RP 10.08.

9. Old Beach Road

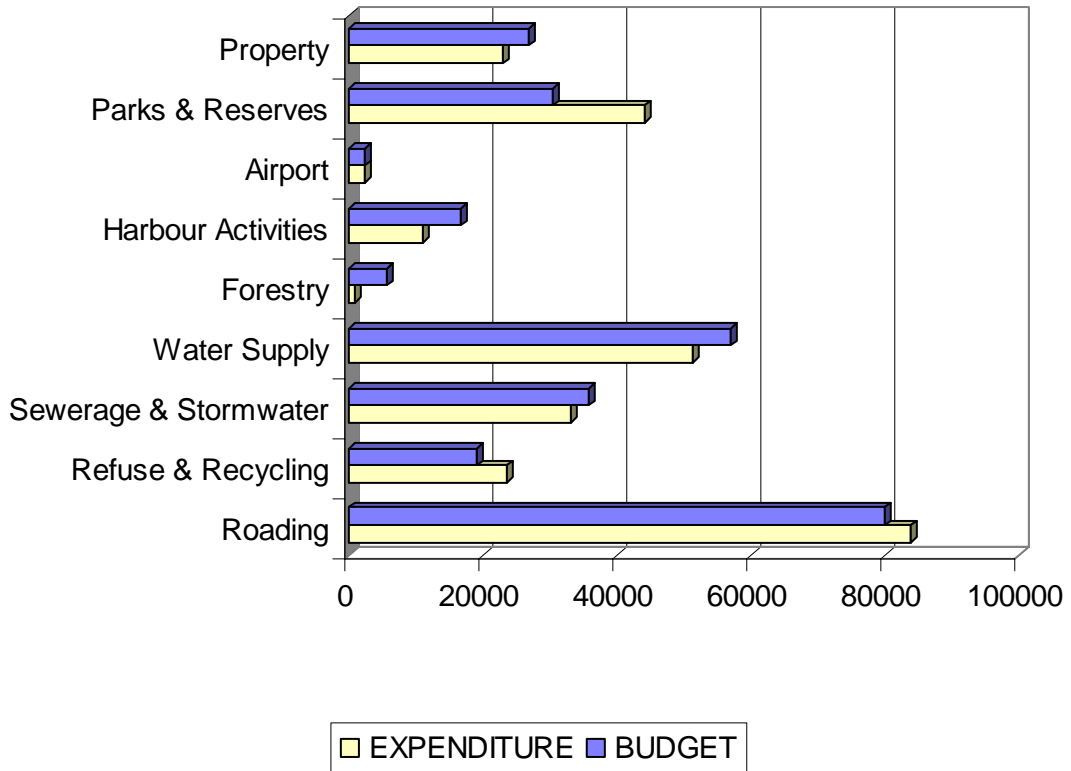
- i) Some corrugations but generally satisfactory condition.
- ii) South of Factory Road – Existing concrete upstand to be secured to box culvert by drilling in steel rods and placing on new concrete base.
- iii) Reinstate fallen bridge end marker recently installed at culvert under road near rail crossing (Factory Rd).
- iv) New edge marker posts to be installed to delineate corner on Factory Road at intersection. Existing Factory Road sign to be relocated as discussed.
- v) Replace faded RG-20 sign on north approach to Middle Creek bridge.

The date of the next road inspection is 7 June 2006.

Works & Services Budget Report



Expenditure - This Month



West End/State Highway 1 Intersection

At its meeting on 20 April 2006, the Committee requested that the motion to rescind the resolution of 21 December 2005 wherein Council “approved Transit New Zealand’s State Highway 1/West End intersection concept for a trial period” be placed on the agenda for the May meeting of the Committee.

Attached is Transit New Zealand’s request to Council on 5 December 2005 for approval to their proposed changes to the West End/State Highway 1 intersection along with a plan of the proposed changes. Also attached are the minutes of the Works & Services Committee meeting held 21 December 2005 where Council discussed and approved Transit New Zealand’s State Highway 1/West End Intersection concept plans for a trial period.

MINUTES OF THE WORKS & SERVICES MEETING HELD 21 DECEMBER 2005

STATE HIGHWAY 1 / WEST END INTERSECTION

The Asset Manager advised a request had been received from B Stratton of Transit New Zealand to investigate a second lane at the West End intersection. He advised the idea had been floated with the Business Discussion Group, who had requested the additional lane, and with affected businesses in the West End. Businesses in the West End had not supported the idea and had advised they would prefer to retain existing carparks as they were integral to their businesses, especially the take away shop. They had also noted cars often drove into the West End on the wrong side of the road, which was very frequent in the summer period.

Councillor McChesney advised while she understood parking affected businesses such as the take away shop, she believed Council shouldn't be asking affected businesses to make the decision because they would naturally not want to lose parks outside their shops and noted the second lane concept would stop the backup of traffic through the West End.

Councillor Woods felt on the whole it was a very sound idea to get rid of the three carparks on the left hand side, however she felt the design tabled was over-kill.

Councillor Seddon favoured the two lanes with one park of the three existing parks being removed and all of the five parks on the other side removed, as shown in Transit's plan as it would allow for better traffic flow.

Councillor Thomas noted while the proposed change meant the loss of 6 carparks, a lot of additional parking had been provided at the Whaleway carpark. He advised he also believed the parks on the left side were currently a safety issue.

Councillor Macphail suggested a trial period as congestion at the intersection needed to be addressed further noting it did not detract from what Council was trying to achieve.

Moved by Councillor McChesney, seconded by Councillor Macphail and resolved that Council approve Transit New Zealand's State Highway 1/West End intersection concept for a trial period.

Against: Councillor Woods

Davidson Terrace Walkway

It was requested at the meeting of 20 April 2006 that the pedestrian crossing at Davidson Terrace Walkway be re-visited by the committee.

Background

A preliminary design and cost estimate to carry out work at the Davidson Terrace pedestrian railway crossing was presented to the Works & Services meeting of 17 November 2004 by M Fletcher of Connell Wagner. Both are appended to this report.

Attached are the minutes of that meeting where the committee resolved that the Davidson Terrace Walkway Upgrade be added to the 2005/2006 Land Transport Programme. It was also requested at that meeting that a survey count of users of the crossing be undertaken by M Fletcher which were included in the Roading Report of the Works & Services agenda 20th April 2005 as follows:

DAVIDSON TERRACE WALKWAY

Pedestrian counts were carried out on Wednesday 6 April 2005 between 2.00pm and 4.00pm. This period of the day was chosen to coincide with the schools finishing.

As expected, the main concentration occurred between 3.00-3.30pm with school children heading home. The results were as follows:

*North to South 2.00-3.00pm = 1, 3.00-4.00pm = 37
South to North 2.00-3.00pm = 0, 3.00-4.00pm = 13*

*Total count = 51, of which 16 had bicycles
Crossing over the track = 42, under the bridge = 9*

At that meeting M Dasler advised “pedestrian counts had been carried out between early April and as expected the main concentration of pedestrians had occurred between 3-3.30pm.

Councillor McChesney suggested the count would have more weight if there was a figure for it to be compared by.

The Chief Executive Officer advised once the Adelphi Terrace Walkway was completed a further survey may be undertaken”.

MINUTES OF THE WORKS & SERVICES COMMITTEE MEETING HELD 17 NOVEMBER 2006.

Davidson Terrace Walkway

A preliminary design and estimate were included in the agenda. M Fletcher advised there were currently two walkways, both in poor condition, however the walkway on the town side would be re-surfaced as part of the footpath upgrade contract recently tendered. He advised the walkway on the other side was not presently in any upgrading programme. A past request was to install a level crossing which was taken to Tranzrail, however this was turned down. Upgrading the existing walkway under the rail with wheelchair access had also been

looked at. The plan included in the agenda showed the length the ramps would need to be and also showed steps coming from the cutting by the ramps. He advised the steps were there for people not in wheelchairs that wanted to access Davidson Terrace without having to use the ramps.

M Fletcher advised while a full survey had not been undertaken, the preliminary price estimate was \$116,928.00.

Councillor McChesney enquired if the eastern side that was being re-surfaced would be wheelchair friendly. M Fletcher advised the Adelphi Terrace end of the walkway had a grade less than 1 in 2 which would be wheelchair friendly, and that it was also wide enough to cater for wheelchairs.

Councillor McChesney further enquired if Council could approach Transit and suggest they take some of the responsibility toward funding since it would be taking children and cyclists off the highway. The Chief Executive Officer advised part of the new safety strategy was to get people cycling off main roads and state highways. He advised Transfund were looking more favourably at funding walkways and suggested a cost benefit be undertaken. M Fletcher advised he would arrange for a survey and count of the area to be undertaken.

Moved by Councillor Seddon, seconded by Councillor McChesney and resolved that the Davidson Terrace Walkway Upgrade be added to the 2005/2006 Land Transport Programme.

**KAIKOURA DISTRICT COUNCIL
Davidson Terrace Pedestrian Rail Crossing
Preliminary Price Estimate**

Item	Description	Unit	Quantity	Rate \$	Amount \$
1.0	General				
1.1	Site Establishment - including insurances etc to meet the contract requirements	LS	1		5,000.00
1.2	Traffic Control - including traffic management plan	LS	1		10,000.00
2.0	Clearing and Earthworks				
2.1	Clearing within area of proposed construction including fences, handrails, shrubs and other vegetation	LS			2,000.00
2.2	Saw cut sealed road. 25mm deep max.	Lin.m	44	4.00	176.00
2.3	Excavate to design formation level (includes excavation of road, steps and existing wall) including carting of	Cu.m	240	50.00	12,000.00

	material to waste and shoring (up to 2.5m high)				
2.4	Excavate concrete incased SW pipe & headwall and cart to waste	Lin.m	5	45.00	225.00
3.0	Retaining Wall				
3.2	Formwork to walls	Sq. m.	120	100.00	12,000.00
3.3	Concrete to walls	Cu.m	17	300.00	5,100.00
3.4	Reinforcement to walls	Tonnes	1	3,125.00	3,125.00
3.2	Keystone retaining wall or similar to extend existing north wall where necessary	Sq.m	16	260.00	4,160.00
	Compacted river run behind new retaining wall	Cu.m	24	28.00	672.00
4.0	Pedestrian Ramp Construction				
4.1	Supply, lay and compact M/4 AP20 100mm thick	Sq.m	95	20.00	1,900.00
4.2	Supply, lay and compact AC10 25mm thick	Sq.m	95	25.00	2,375.00
4.3	Supply and place new timber battens	Lin.m	42	15.00	630.00
4.4	Supply and install new handrails	Lin.m	60	250.00	15,000.00
5.0	Road Construction				
5.1	Supply, lay and compact M/4 AP40 50mm thick	Sq.m	45	54.00	2,430.00
5.2	Supply, lay and compact M/4 AP65 200mm thick	Sq.m	45	35.00	1,575.00
5.3	Two coat seal (Grade 4 and 6) including preparation, adhesion agent and all other items required to complete seal coat in accordance with TNZ P/3 and P/4	Sq.m	59	15.00	885.00
5.4	Supply and install new guardrail and handrail	Lin.m	45	350.00	15,750.00
5.0	Stormwater				
5.1	Supply and Install sump and risers	No.	1	1,000.00	1,000.00
5.2	Supply and install new uPVC SW pipe and connect into existing outfall	Lin.m	5	85.00	425.00
6.0	Miscellaneous				
6.1	New signage / paint markings	LS			500.00
7.0	Contingency Sum				10,000.00
8.0	Engineering Fees				10,000.00
9.0	Total				116,928.00

