

**KAIKOURA DISTRICT COUNCIL WORKS AND SERVICES
COMMITTEE MEETING HELD AT 9.00AM ON WEDNESDAY 21
JUNE 2006 IN MEMORIAL HALL SUPPER ROOM, ESPLANADE,
KAIKOURA.**

AGENDA

1. Apologies

2. Matters of Importance to be raised as Urgent Business.

3. Matters Arising from Report of 17/05/2006

page 60

4. Minutes Action and Issues List Update

MEETING	ACTION REQUIRED	BY	DATE ACTIONED
	21 DECEMBER 2005		
Works & Services	Pursue all funding avenues for Lyell Creek Bridge	Council	In Progress
	15 MARCH 2006		
Works & Services	Install closed circuit cameras near West End Toilet Facility.	Marlene	In Progress
Works & Services	Arrange meeting with Works Infrastructure South Island Manager and Kaikoura Works Infrastructure, along with Councillors Pablecheque and Seddon regarding roading contract and work in general and report back to April Works meeting.	M Fletcher	In Progress
	20 APRIL 2006		
Works	Carry out further investigations on Middle Creek Bridge	Gallo/M Fletcher	In Progress
	17 MAY 2006		
Works & Services	Arrange collective meeting for early June with local farmers re stock effluent on roads	M Fletcher	In Progress
Works & Services	Provide a report and list of costs relating to upgrading of interior of Jimmy Armer's toilet facility	Marlene	In Progress
Works & Services	Road markings in Scarborough Street to be completed by end of May	M Fletcher	In Progress
Works & Services	Investigate options and costings for footpathing in South Bay. Look at	Gallo/Marlene	In Progress

	potholes.		
Works & Services	Investigate upgrading Davidson Terrace Walkway and re-fencing of railway line	Gallo / Marlene	In Progress
Works & Services	Remove one carpark, being the first carpark from State Highway 1, on the Lyell Creek side of the West End.	Gallo	In Progress

5. Reports:

- **Works and Services Report** *page 1*
- **Roading Report** *page 5*
- **Works and Services Budget Report** *page 15*
-

6. Urgent Business

Works & Services Report

WATER SUPPLY

Urban Water

Operations

During this reporting period there was a failure with the chlorination system and this has since been resolved. There was also a burst on the trunk main along Mt Fyffe Road on the 22nd May 2006 which was repaired on the same day.

Water Demand

In general, the demand for the period is decreasing when compared to the previous month. The average demand for May was 2531m³/day whereas for April it was 3081.75m³/day

The graph below shows only the total supply from the Waimangarara.

New Water Source

Work on the new source is still ongoing and the resource application process for the extraction of water from the source is with Environment Canterbury.

Kincaid Water Supply

There was no major malfunction with the Kincaid Water System during the reporting month.

SEWER SYSTEM

Urban Reticulation

The sewage flow averaged 1456.6m³/day during the Month of May, much less than the over 1700m³/day measured last month. The maximum flow recorded was 2049 m³ /day on the 3rd May, when it rained heavily for most of the day. The outflow at the pond pumping station showed an average of 1502 m³/day with a maximum of 2118m³/day, this high volume is attributable to the mostly wet period we have been experiencing.

The measured Dissolved Oxygen averaged 3.0mg/l. during the month with some readings dropping below 2.0mg/l.

STORMWATER

Urban Stormwater

Despite the rains during the month there was no major problem with the storm-water system.

PARKS & RESERVES

The maintenance of these assets continues with the contractor trying to ensure that he does not slip behind with his schedule as a result of the rains.

PUBLIC TOILETS

The public toilet facilities are being fairly maintained. The camera installation at the West End toilet facility has now been completed.

The toilet facility at the Northern Entrance has now been connected and is fully operational.

The investigation for upgrade at the Jimmy Armers toilet has not been concluded and will be presented at the next Council meeting.

LYELL CREEK FOOTBRIDGE

Construction works is in progress, the bridge is now in place and the handrails will be installed by the end of June.

STAIRWAY UNDER RAILWAY LINE – DAVIDSON TERRACE

Work to upgrade the stairway under the railway has been identified and is estimated to cost approximately \$13,000.00 excluding GST.

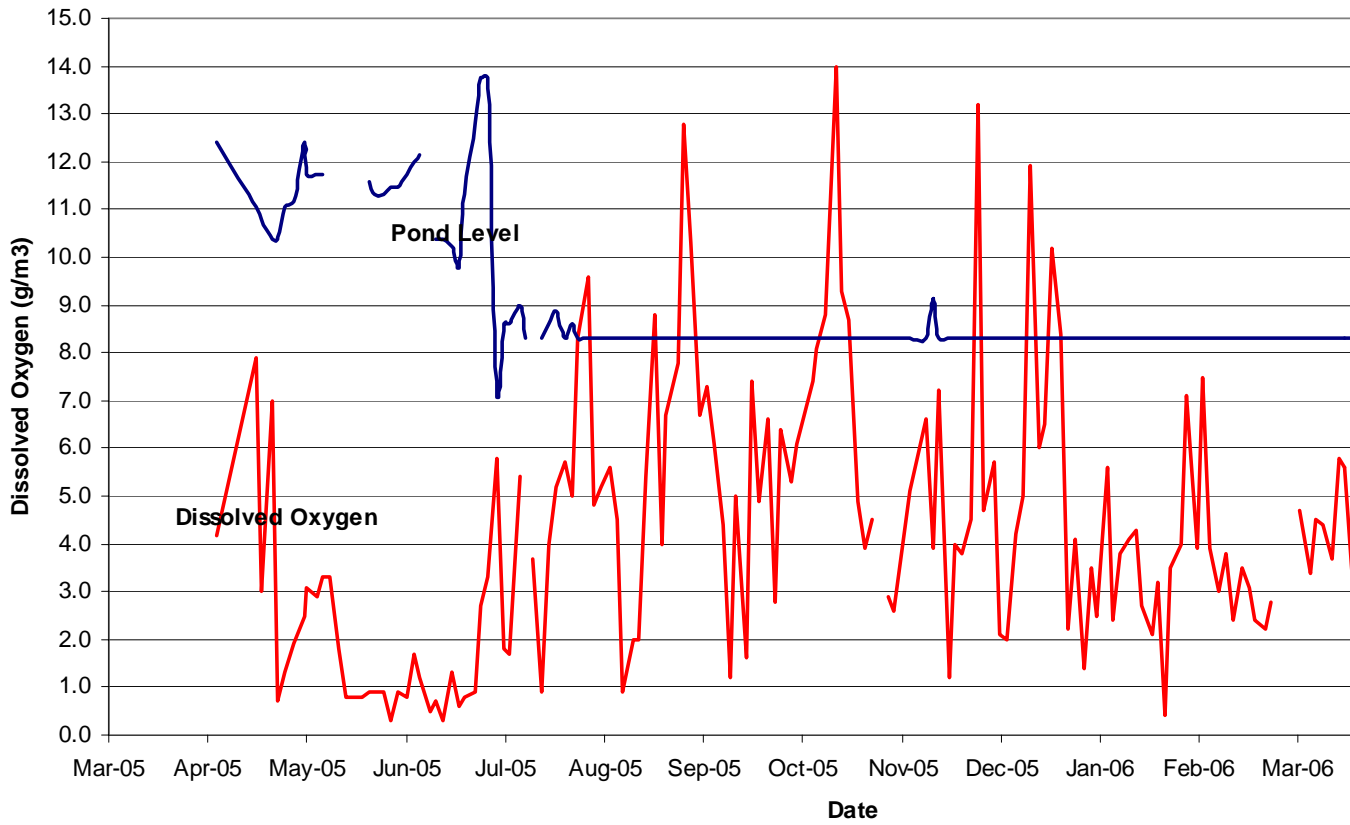
The work includes the following:

- 1 – Remove the existing stairs (treads and risers)
- 2 – Construct a standard concrete stairway with a minimum waist of 80mm and a minimum of 2m headroom directly under Railway Bridge.

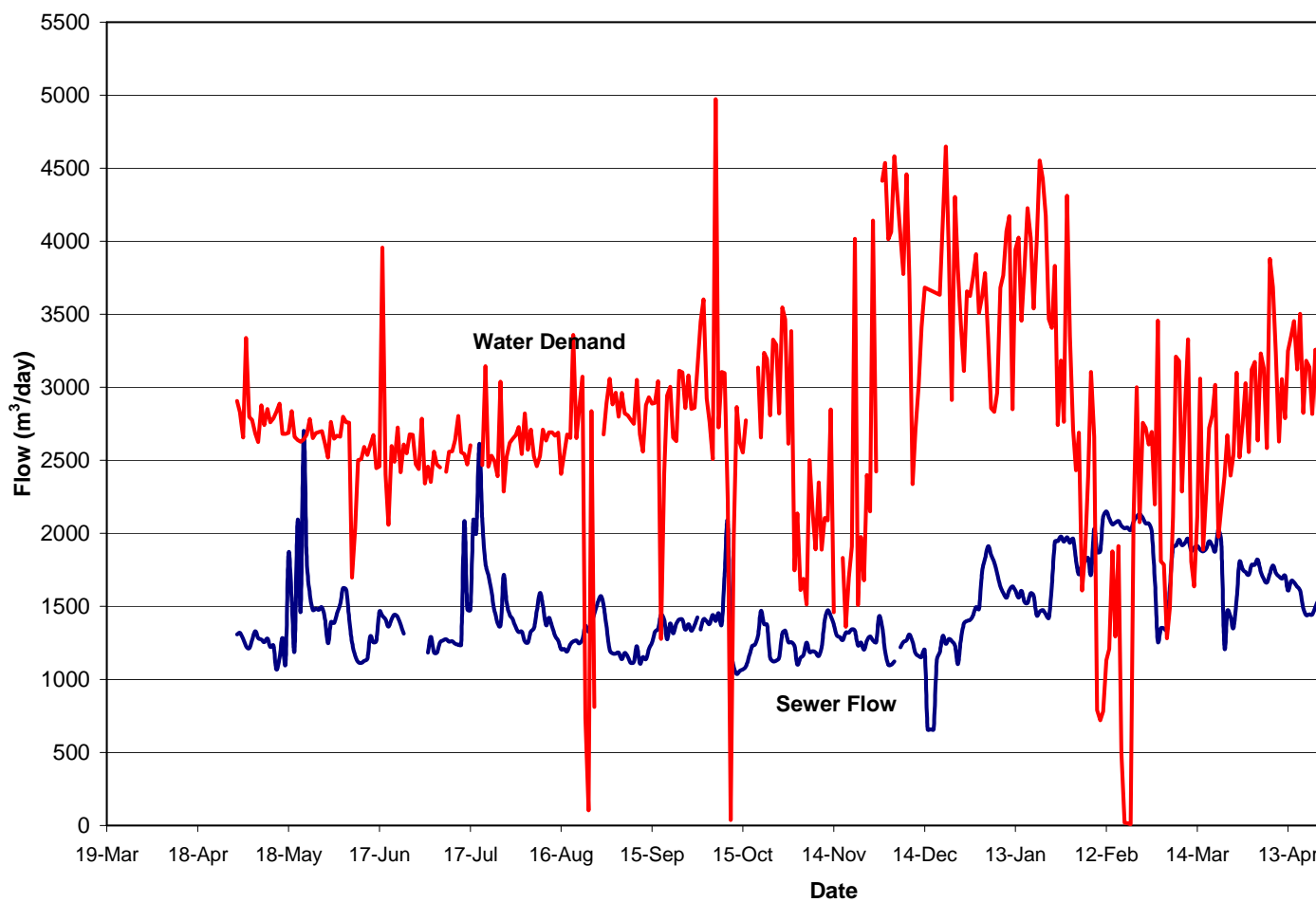
OTHER

Works continue on the processing of resource consents.

**Kaikoura Oxidation Pond
DO & Water Levels
(April 2005 to May 2006)**



**Water Demands & Sewer Flows
(May 2005 -May 2006)**



Roading Report

LAND TRANSPORT PROGRAMMES/RECORDS

Returns and information are being supplied to Transfund New Zealand as requested.

The Middle Creek Bridge Replacement submission has been placed as a draft. Further investigation is now required into replacement options that will meet the funding criteria.

ROUTINE ROAD AND BRIDGE INSPECTIONS

Routine road and bridge inspections are continuing with the roads in the southern area inspected on 7 June 2006. (Copies of the record of inspection are attached.)

Pavement repairs were needed in several locations on the southern roads, otherwise the roads were generally in a satisfactory condition. Grading is required and has been programmed for Beach Road and other northern roads over the next month. Maintenance gravelling for the current financial year has been completed. The work to raise low areas on Postmans Road and Hapuku Settlement has been completed

RAMM SYSTEM UPGRADE

Maintenance of the RAMM system is ongoing and will be updated as more information becomes available.

The biennial RAMM Road Condition Rating survey of the Kaikoura District is to be carried out this month.

TRAFFIC COUNTING PROGRAMME

Traffic counts for the month of May include the following roads:

- 1) Inland Road – Linton Downs
- 2) Kekerengu Valley Road

The traffic counts on Inland Road – Linton Downs were higher than the previous two years (210 vehicles per day), Counts have fluctuated within a range of 140 to 230 vehicles per day over the last 6 years.

The traffic counts on Kekerengu Valley Road have remained virtually unchanged since 2003 (60-70 vehicles per day).

We are forwarding copies of the traffic counts and speed matrices to the Kaikoura Police.

FOOTPATH UPGRADES

A number of maintenance items are still required to be completed by the Contractor before the contract can be finalised and retentions released. These include tidying up of grass berms, sweeping of chip sealed footpaths and repairing areas of slumped road reinstatement adjacent to the new kerb and channel on Ludstone Road.

RESEALING 2005/2006

The 2005 / 2006 reseal contract is complete. Work will soon begin on identifying road sections to be included in next years resealing programme.

MAINTENANCE GRAVELLING 2005/2006

Maintenance gravelling for the current financial year has been completed with the majority of the road sections inspected and found to be in good condition.

STOCK EFFLUENT ON COUNCIL ROADS

Further meetings with the individual landowners will continue over the coming months. Once all the landowners have been spoken to a report will be prepared for Council.

MOA POINT SEAWALL

Following the articles in the paper and opposition voiced by some of the local residents, Environment Canterbury decided to change their approach from limited notification to full notification.

Submissions on the seawall proposal are expected to be received over the next month.

STREET LIGHT UPGRADES

A site meeting with Mainpower is being arranged to finalise the lighting for Stage 4. This will include installation of underground cable and new lighting columns along Upper Killarney Street and new lighting on the initial section of Scarborough Street.

BAYVIEW STREET UPGRADE

An inspection was carried out on 7 June 2006. Before the contract can be finalised further work is required to sweep & remove loose chip from the footpaths and top up & level grass berms. Weeds and bare patches within the grass berms are also to be attended too.

ROAD MARKINGS

Roadmarkers NZ Ltd have been delayed due to wet weather and other work commitments but are endeavouring to carry out the programmed remarking of the Esplanade cyclelanes and other requested areas as soon as possible.

As the previous contract in 04/05 was carried out in April 2005 it is not intended to carry out a full road marking programme until November / December 2006.

**Infrastructure Works Timetable
2005/2006**

Project	Awarded	Contractor	Start Date	Completed
Resealing 2005/2006	Yes	T.C. Nicholls	February 2006	Yes
Footpath Upgrading	Yes	Fulton Hogan	January 2005	Yes
Street Light Upgrades	Yes	MainPower	January 2005	-
Maintenance Gravelling	Yes	Works Infrastructure	May 2006	Yes
West End Redevelopment Stage I	Yes	Works Infrastructure	February 2004	Yes
Road Markings	Yes	Roadmarkers NZ Ltd	June 2006	-
Watermain Renewals 2005/2006	No	-	July 2006	-
Sewage Treatment Upgrade	Yes	City Care Limited	February 2005	Yes
Moa Point Seawall	No	-	??	-
Bayview Street Upgrade	Yes	Works Infrastructure	September 2005	Yes
Peninsula Booster Pump Stn	Yes	Works Infrastructure	November 2005	-
New Water Source	Yes	Fulton Hogan	December 2005	-
Oxidation Pond Screen	Yes	Fulton Hogan	May 2006	Yes
Desludging of Oxidation Ponds	Yes	Robson Environmental	August 2006	-
Sewer Trunk Main (Stage 1)	Yes	BG Contracting Ltd	February 2006	-
Sewer Trunk Main (Stage 2)	No	-	July 2006	-

**RECORD OF INSPECTION
ROAD MAINTENANCE CONTRACT**

RECORD OF INSPECTION

7 June 2006

1. Birches Road

- i) Only wheeltracks free of grass growth. Next grade to ensure full width reclaimed.

2. Glencree Road

- i) Pothole repairs required, particularly at bridge ends.

3. Oaro M

- i) Satisfactory condition.

4. Waitane Road

- ii) Minor potholes at start of unsealed section.

5. Moana Road

- i) Satisfactory condition.

6. Valley Road

- i) Satisfactory condition.

7. Rakanui / Bullens Roads

- i) Minor potholes in unsealed section. Sight rail has been repaired.

8. Inland Road

- i) Temporary ice/grit sign has been vandalised. Signs to be straighten or replaced if necessary.
- ii) Missing curve advisory sign past Greenburn bridge to be replaced.
- iii) Cleaning out of roadside dish channels and clearing of slip and branches along Greenburn bluffs now considered urgent.
- iv) Further edgebreak repairs marked out near gabion baskets / Greenburn bridge.

9. Scotts Road

- i) Recent washout at first corner has been repaired. Further work required to reinstate LHS shoulder and to clear out channel around culvert inlet.
- ii) Road in acceptable condition.

10. Blunts Road

- i) Road in acceptable condition. Grass growth evident in centreline and edges.

11. South Bay Parade / Tui Road / Moa Road

- i) Moa Road boat area has extensive potholes in sealed and unsealed area requiring repair. Smaller potholes in road carriageway.
- ii) Tui Road looking narrow due to edgebreak and recently filled shoulder looking low. Shoulders to be maintained with make up material added as necessary. Consider this road for resealing next financial year including edgebreak repairs to reclaim width.
- iii) Repair potholes at corner of South Bay Parade and Tui Road.

12. Ludstone Road

- i) Two digout repairs needed prior to Green Lane. This section of road regularly needing repairs possibly due to runoff from steep adjacent land. Surface water channel to be excavated on LHS from culvert back to prior corner.

13. Green Lane

- i) Road in acceptable condition.

14. Red Swamp Road

- i) No problems noted over sealed section.

15. Postmans Road / Chapmans Road

- i) Maintenance gravelling and raising of low area complete. Informed that low area draining to culvert as per design.
- ii) One lane bridge priority give way signs now installed at Kennedys Bridge.

16. McInnes Road

- i) Next grading to tidy shoulders and surface water channel over initial section.

17. Mt Fyffe Road

- i) Road in adequate condition. Noted flatness and width of carriageway causing localised scouring.
- ii) Grading to form more cutouts at regular intervals along high shoulders on both sides to allow stormwater runoff.
- iii) Note: possible improvements to road as improved camber by grading and further maintenance metal.
- iv) Note: Monitor future stormwater damage on road. Drainage could be improved by forming shoulder / surface water channels and creating a more uniform road width.

18. Pooles Road / Topline Road

- i) Satisfactory condition.

19. Factory Road

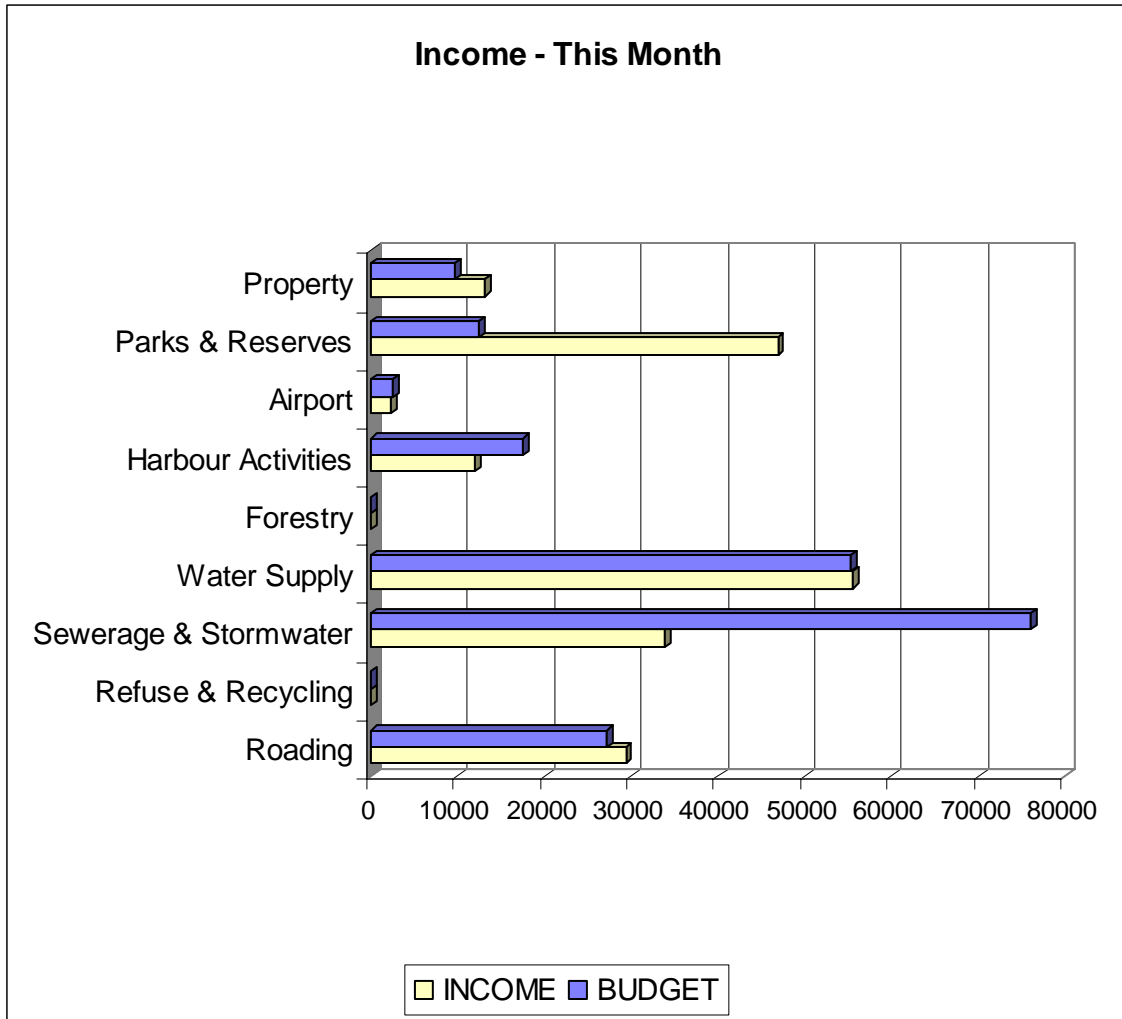
- i) Satisfactory condition.

20. Beach Road (Hapuku Settlement to Town)

- i) Raising of low area in Hapuku Settlement completed.
- ii) Grading required on Beach Road. Potholes and loss of shape causing scouring.

The date of the next road inspection is 5 July 2006.

Works & Services Budget Report



Expenditure - This Month

