

**KAIKOURA DISTRICT COUNCIL WORKS AND SERVICES  
COMMITTEE MEETING HELD AT 9.00AM ON WEDNESDAY 16  
MAY 2007 IN MEMORIAL HALL SUPPER ROOM, ESPLANADE,  
KAIKOURA.**

**AGENDA**

*1. Apologies*

*2. Matters of Importance to be raised as Urgent Business.*

*3. Matters Arising from Report of 18/04/2007*

*page 60*

*4. Minutes Action and Issues List Update*

<b>MEETING</b>	<b>ACTION REQUIRED</b>	<b>BY</b>	<b>DATE ACTIONED</b>
	<i>18 APRIL 2007</i>		
Works & Services	Provide a full report and costings for the upgrading of toilet facilities including how long it takes to clean each facility and the cleaning times for each facility	G Saidy/M Roberts-Saidy	Page 4
Works & Services	Hold a workshop to brainstorm how current toilet facilities could be improved	Council	To be arranged
Works & Services	Invite Murray Devine to May meeting	Marlene	See agenda

*5. Reports:*

- **Works and Services Report** *page 1*
- **Roading Report** *page 8*
- **Works and Services Budget Report** *page 16*

*6. 9.00am M Devine of Eastcoast Security will be present*

*7. Urgent Business*

# WORKS & SERVICES REPORTS

## General Works 1.0 WATER SUPPLY

### Urban Water Operations

No major problem was experienced with the urban system during the reporting Month.

### Water Demand

The average demand for the urban supply, meaning the township, for the month of April was 2790m<sup>3</sup>/day whereas the demand for the month of March was 3138m<sup>3</sup>/day; these figures are recorded from the new source. The peak daily demand recorded during the month was 3529m<sup>3</sup> on April 1, 2007.

### Water Quality

Water quality monitored since the commissioning of the Mackles bore shows that Faecal Coliform has consistently been less than the guideline values of the NZDWS 2005 however it has been observed on two occasions that the iron and manganese concentration exceeded the guideline values. This was attributed to bad samples as samples collected immediately after shows iron and manganese concentration well below the guideline values stipulated by NZDWS 2005. Figure 1 below shows the water quality profile for nitrates, iron and manganese. We will continue to monitor and report on these quality parameters at every council meeting.

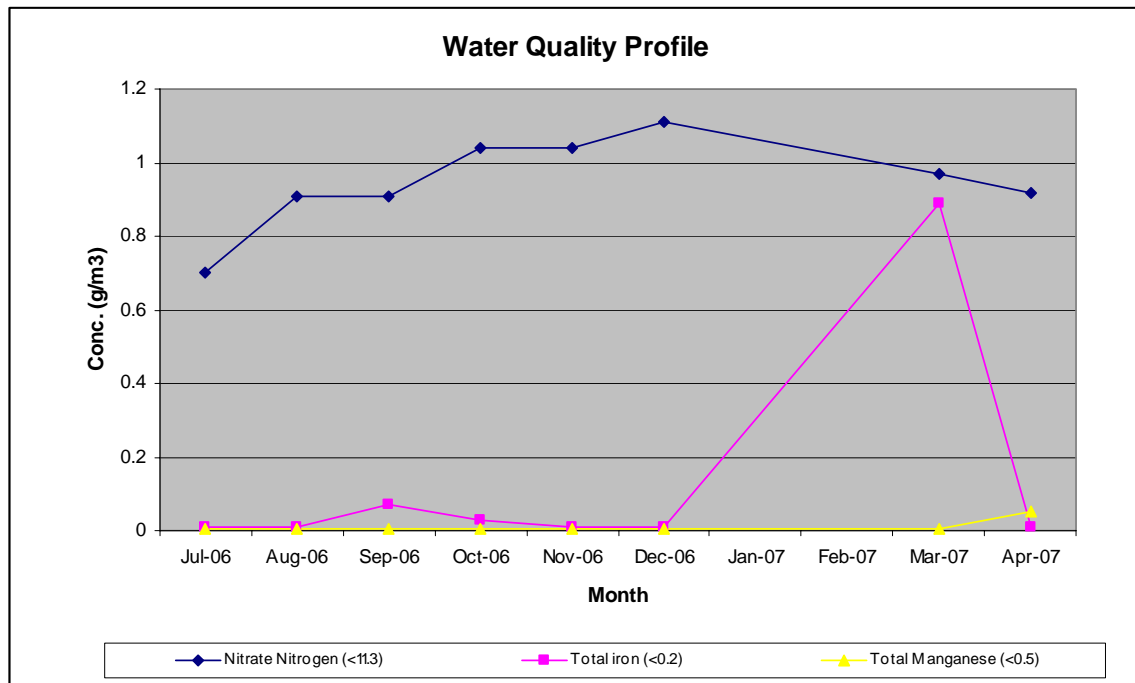


Figure 1: Water Quality Profile, Bore #1 - New Source

### ***Kincaid Water Supply***

No major problem was experienced with the Kincaid system during the reporting month.

### ***Public Health Management Plans (PHRMP)***

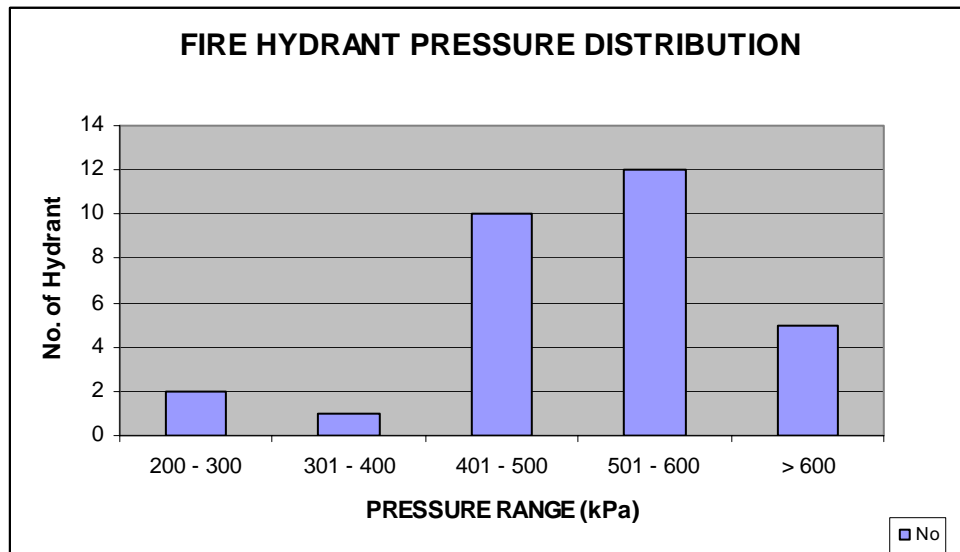
At the time of writing this report, Public Health Risk Management Plans have been approved for four of the small supplies (Kincaid, Fernleigh, Peketa and Oaro) with final approval of the East Coast supply pending.

In completing the steps to be eligible to apply for the Capital Assistant Programme (CAP) Funding we are currently at step 6 of the attached flowchart (Page 3). Peter Burt of the Ministry of Health (Water Assessor for Kaikoura) will be contacting the supply representatives shortly to initiate this process.

### ***Fire Hydrant Report***

An assessment of 30 fire hydrants (representing 23% of total hydrants) was conducted on 7th February 2007 by Fulton Hogan Ltd. The assessment shows that of the 30 fire hydrants assessed 29 complied with the minimum flow (12.5l/s) requirements whereas all 30 complied with minimum pressure requirements of 100kPa as stipulated by New Zealand Fire Service, Fire Fighting Water Supplies Code of Practice (SNZ PAS 4509:2003) . Figure 2 below shows the pressure distribution of the hydrants.

The remaining 98 hydrants will be tested at a later date.



**Figure 2: Fire Hydrant Pressure Profile**

### ***Pressure Reducing Valve Report***

On April 4<sup>th</sup> 2007, Deeco Services carried out an inspection of 12 pressure reducing valves in the system. 10 of these valves were assessed to be in good condition whereas two were assessed as being fair. The two valves assessed as being fair require some parts to be replaced.

## 2.0 SEWER SYSTEM

### *Urban Reticulation*

The sewage flow averaged 1357m<sup>3</sup>/day for the month of April whereas the flow for March 2007 was 1327 m<sup>3</sup>/day as measured at the Mill Rd pumping station. The average flows at the Oxidation pond was 1396 m<sup>3</sup>/day

The measured Dissolved Oxygen (DO) averaged 4.5mg/l whereas it measured 4.4mg/l in March 2007. The pond performed satisfactorily during the reporting month.

## 3.0 STORMWATER

### *Urban Stormwater*

There has been no operational problem with the storm-water system for the reporting month.

*Global Consent* – A Storm-water Global Consent application has been lodged with ECAN. This will see all un-consented and consented discharge under one consent for the next 7 years.

## 4.0 PARKS & RESERVES

These assets have been fairly maintained during the reporting month.

## 5.0 PUBLIC TOILETS

We have now entered the winter period hence the cleaning of the facilities has reverted to once daily. Considering this, the contractor was asked to have the West End facility cleaned twice daily from 18<sup>th</sup> April to the 27<sup>th</sup> to cater for the ANZAC period.

Cost for the upgrading of the toilets has been investigated. Table 1 below gives a brief outline of the proposed scope of works and their estimates.

WEST END TOILET UPGRADE					
ITEM	WORK DESCRIPTION	Unit	Rate (\$)	Quantity	Amount
1	Solar Lighting	LS		1	\$3,500.00
2	Floor Tiling	m2	115.00	95	\$10,925.00
3	Wall Tiling	m2	105.00	105	\$11,025.00
4	Re-Work on Panels, Doors metal Wall Mounted Boxes	LS			\$4,828.80
5	Painting of the Roof timber Framework	LS			\$2,200.00
					\$32,478.80
				Contingency 10%	\$3,247.88
				Sum	\$35,726.68
				Total Amount plus GST	<b>\$40,192.52</b>

**Table 1 Costing for proposed upgrade works**

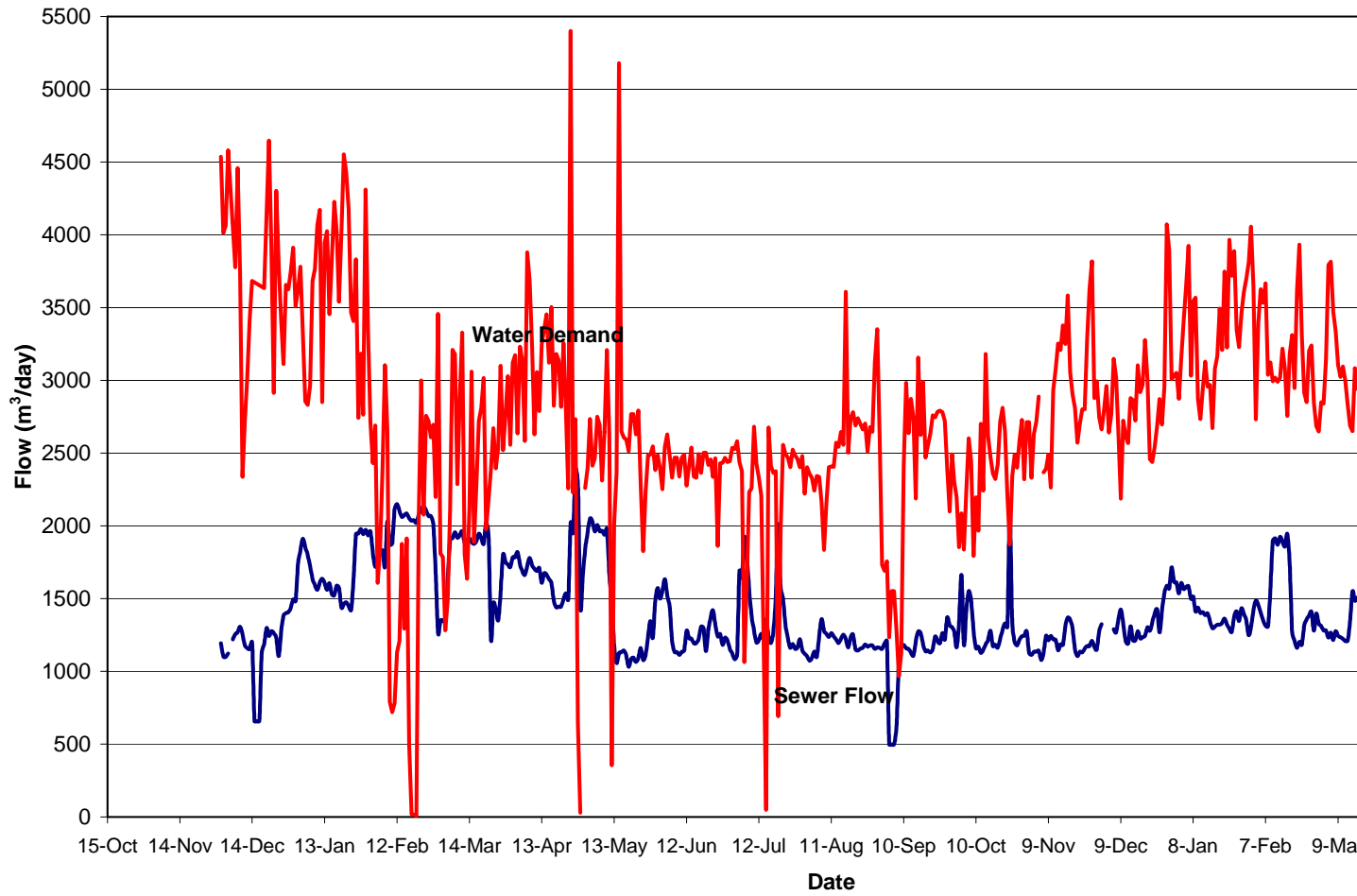
## 6.0 OTHERS

The lining of the anaerobic ponds has been completed. It is anticipated that the works will be commissioned on the week of May 20<sup>th</sup>, 2007.

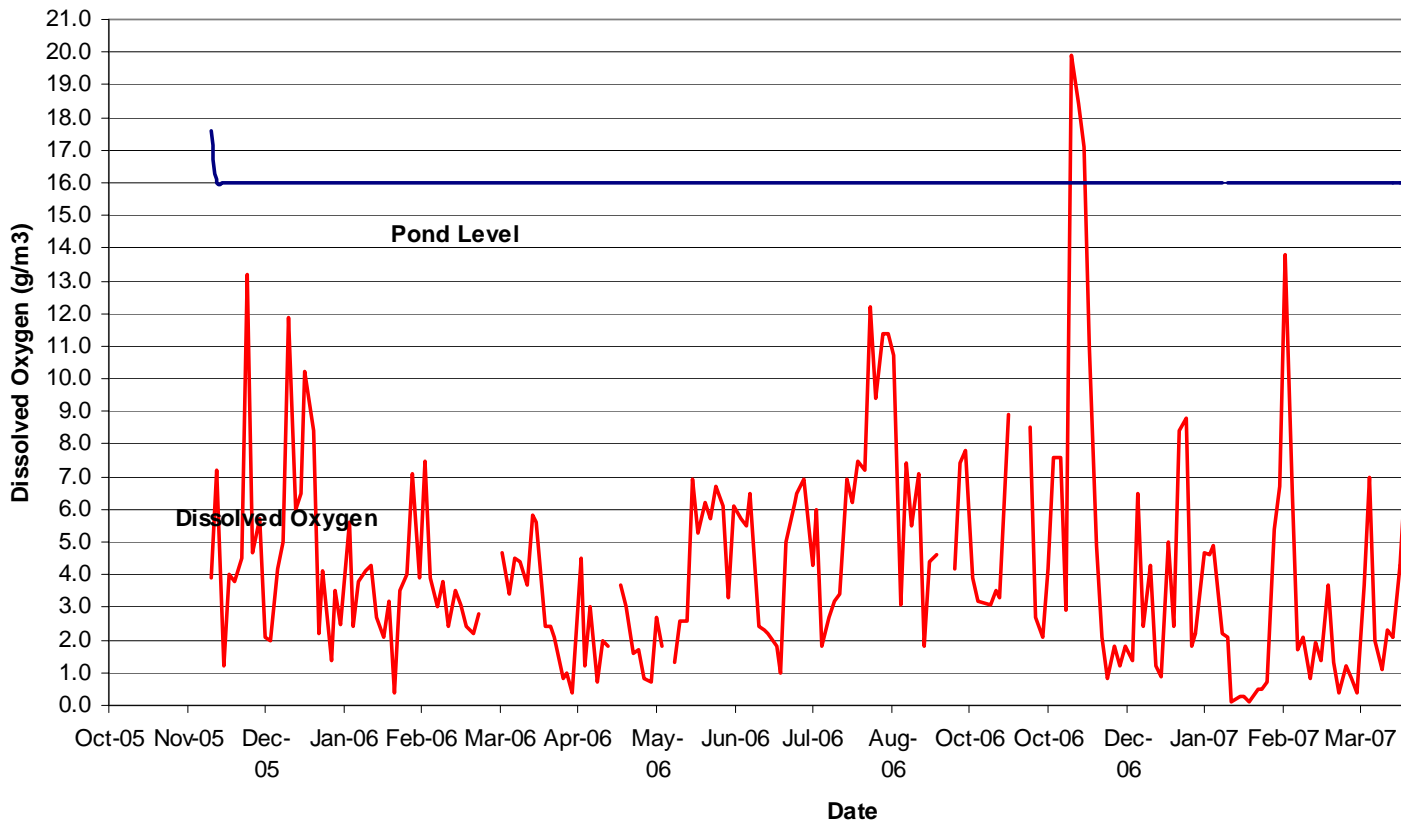
## **Capital Works**

There are no capital works outstanding at this point.

**Water Demands & Sewer Flows  
(Dec 2005 - April 2007)**



**Kaikoura Oxidation Pond  
DO & Water Levels  
(Dec 2005 to April 2007)**



# **ROADING REPORT**

## **CAPITAL PROJECTS**

No roading capital projects are outstanding as of 31 March 2007

## **BRIDGE MAINTENANCE PROGRAM**

Work is progressing on the maintenance/repair work identified as priority A, the only outstanding items on the approved priority lists remains the same as was reported last month

## **RAMM SYSTEM UPGRADE**

The updating of the RAMM data is progressing with Connell Wagner.

## **STOCK EFFLUENT ON COUNCIL ROADS**

We are awaiting the purchase and trial of Cow Trax by the Farmer.

## **MAINTAINANCE GRAVELING 2006/2007**

The 2006/2007 maintenance gravelling program is due to commence in May 2007

## **TRAFFIC COUNT**

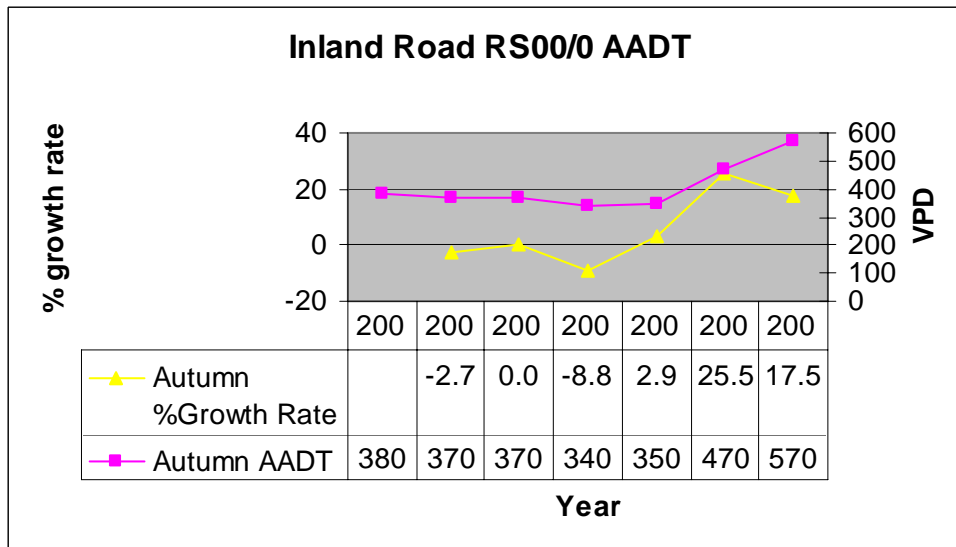
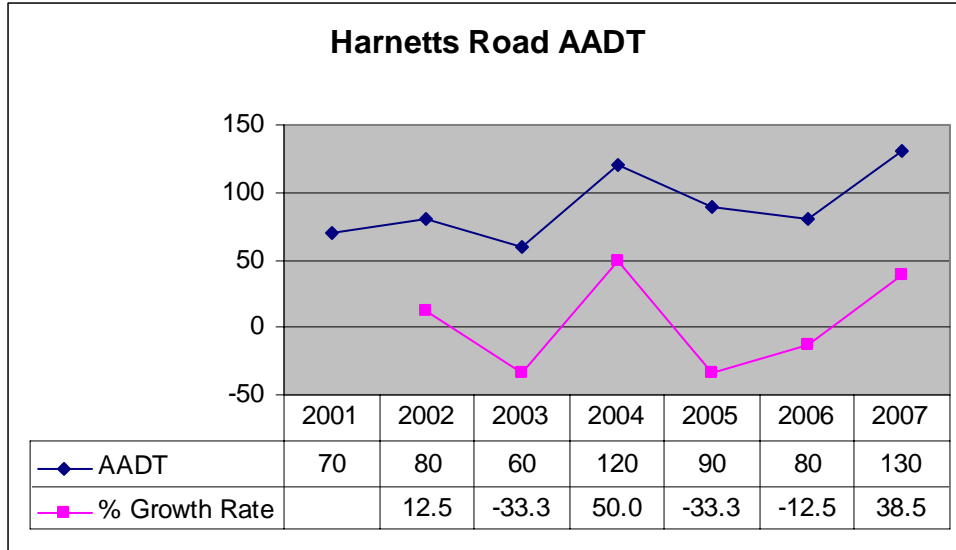
Traffic count for the month of April included the following roads

Harnetts Road – 130 Vehciles per day (vpd)

Inland Road (SH1 end) – 570 vpd.

The average daily count for Harnetts Road has increased by 38.5% since last year and is the highest reading yet recorded for this road. Heavy traffic constituted 20.5% of the traffic. 85% of traffic was recorded as traveling at less than 90 kmh however 5 vehicles were recorded as doing in excess of 140 kmh.

The Inland Road traffic counter showed an increase from last year of 17.5% and a trend from 2001 of 17.5%. 28.9% of vehicles were doing in excess of the posted speed limit of 100kmh. Heavy vehicles registered as 40%. A large proportion of these were recorded as travelling from west to east. Next months placement 16 km along Inland Road may give some indication of where the heavy traffic flow is generated.



We are continuing to provide the police with the traffic count results.

## SUMMARY OF COMPLETED WORK FOR MARCH 2007

Road ID	Road Name	Potholes	Grading	Various
101	Beach Rd		1/2	
157	Burrells lane		1	
103	Blue Duck Valley Road		1	
12	Esplanade	4		
123	Kiwa Road		1/2	
22	Killarney St	3		
27	Kowhai Ford Rd	5		
158	Mcinnnes road		1	
129	Mt Fyffe Rd	3		
134	Postmans Rd	5		flooding signs
140	Red Swamp Rd	4	1	
33	Scarborough St	2		
145	Skevingtons Road		1	
142	Schoolhouse Road		1	
45	Yarmouth St	10		

# RECORD OF INSPECTION

20 April 2007

**1. Puketa Road**

i) Road is in good condition.

**2. Valley Road**

ii) Road in Satisfactory condition. Some potholes.

**3. Moana**

i) Road in fair condition.

**4. Makura**

i) Road in fair condition.

**5. Oaro M**

iii) Loose shingle on left just after leaving SH1 is encroaching and needs a sweep, otherwise in a fairly satisfactory condition

**6. Birches Road**

iv) Few potholes require fixing.

**7. Waitane Road**

v) Sealed section is okay.

vi) Unsealed is in fair condition to 'Private Property' sign.

vii) Overhanging branches near junction with SH1 need clearing.

**8. Glencree**

i) Shallow scouring on first hill down. Otherwise road in fair condition

**9. Rakanui**

i) Potholes on unsealed section.

**The date of the next road inspection to be confirmed**

**Network Traffic Flows** - No major traffic delays were encountered in the Kaikoura roading network within the March period.

## MetroCount Traffic Executive Class Speed Matrix

### ClassMatrix-42 -- English (enz)

#### Datasets:

**Site:** [11800900] Inland Road RS00/0 - Control Count  
**Direction:** 7 - North bound A>B, South bound B>A., Lane: 0  
**Survey Duration:** 11:54 Wednesday, 18 April 2007 => 11:47 Thursday, 26 April 2007  
**File:** R:\13 Roding\13.1 General\13.1.1 Urban\Traffic  
Count\KDC\_Dat\_Files\2007\11800900 - Inland Route00(2)\11800900.EC0 (Plus)  
**Identifier:** M1211H48 MC56-6 [MC55] (c)Microcom 02/03/01  
**Algorithm:** Factory default  
**Data type:** Axle sensors - Paired (Class/Speed/Count)

#### Profile:

**Filter time:** 13:00 Wednesday, 18 April 2007 => 13:00 Wednesday, 25 April 2007  
**Included classes:** 1, 2, 3, 4, 5, 6, 7, 8, 9, 10, 11, 12  
**Speed range:** 10 - 160 km/h.  
**Direction:** North, East, South, West (bound)  
**Separation:** All - (Headway)  
**Name:** Factory default profile  
**Scheme:** Vehicle classification (AustRoads94)  
**Units:** Metric (meter, kilometer, m/s, km/h, kg, tonne)  
**In profile:** Vehicles = 3676 / 4112 (89.40%)

## Class Speed Matrix

**ClassMatrix-42**

**Site:** 11800900.0SN  
**Description:** Inland Road RS00/0 - Control Count  
**Filter time:** 13:00 Wednesday, 18 April 2007 => 13:00 Wednesday, 25 April 2007  
**Scheme:** Vehicle classification (AustRoads94)  
**Filter:** Cls(1 2 3 4 5 6 7 8 9 10 11 12 ) Dir(NESW) Sp(10,160) Headway(>0)

Speed (km/h)  
Speed Totals

		Class									
		1	2	3	4	5	6	7	8	9	10
<u>11</u>	<u>12</u>										
10 - 20		4	.	.	.	.	.	.	.	.	.
.		4	0.1%								
20 - 30		12	.	.	.	.	.	.	.	.	.
.		12	0.3%								
30 - 40		12	1	1	.	.	.	.	1	.	.
.		15	0.4%								
40 - 50		30	12	3	.	1	.	.	.	2	1
.		49	1.3%								
50 - 60		185	47	29	9	3	.	.	.	1	3
.		277	7.5%								
60 - 70		703	70	24	5	4	.	10	.	1	6
.		823	22.4%								
70 - 80		678	31	42	5	10	5	12	.	3	3
2		791	21.5%								
80 - 90		202	7	85	1	.	4	20	.	1	.
5		325	8.8%								
90 - 100		110	15	157	.	1	8	9	.	1	.
13		314	8.5%								
100 - 110		93	6	183	3	1	8	6	1	.	.
1		302	8.2%								
110 - 120		75	.	222	.	.	10	6	.	.	.
3		316	8.6%								
120 - 130		44	.	197	.	.	1	2	.	.	.
.		244	6.6%								
130 - 140		16	.	112	.	.	1	.	1	.	.
.		130	3.5%								
140 - 150		1	.	50	.	.	1	.	.	.	.
.		52	1.4%								
150 - 160		3	.	19	.	.	.	.	.	.	.
.		22	0.6%								
		2168	189	1124	23	20	38	65	3	9	13
24	0	3676									
0.7%	0.0%	59.0%	5.1%	30.6%	0.6%	0.5%	1.0%	1.8%	0.1%	0.2%	0.4%
Class Totals											

## MetroCount Traffic Executive Class Speed Matrix

### ClassMatrix-35 -- English (enz)

#### Datasets:

**Site:** [12001200] Harnetts Road  
**Direction:** 6 - West bound A>B, East bound B>A., **Lane:** 0  
**Survey Duration:** 12:44 Wednesday, 4 April 2007 => 11:49 Wednesday, 18 April 2007  
**File:** R:\13 Roding\13.1 General\13.1.1 Urban\Traffic  
Count\KDC\_Dat\_Files\2007\12001200 - Harnetts Road\12001200.EC0 (Plus)  
**Identifier:** M1211H48 MC56-6 [MC55] (c)Microcom 02/03/01  
**Algorithm:** Factory default  
**Data type:** Axle sensors - Paired (Class/Speed/Count)

#### Profile:

**Filter time:** 14:00 Wednesday, 4 April 2007 => 14:00 Wednesday, 11 April 2007  
**Included classes:** 1, 2, 3, 4, 5, 6, 7, 8, 9, 10, 11, 12  
**Speed range:** 10 - 160 km/h.  
**Direction:** North, East, South, West (bound)  
**Separation:** All - (Headway)  
**Name:** Factory default profile  
**Scheme:** Vehicle classification (AustRoads94)  
**Units:** Metric (meter, kilometer, m/s, km/h, kg, tonne)  
**In profile:** Vehicles = 900 / 1853 (48.57%)

## Class Speed Matrix

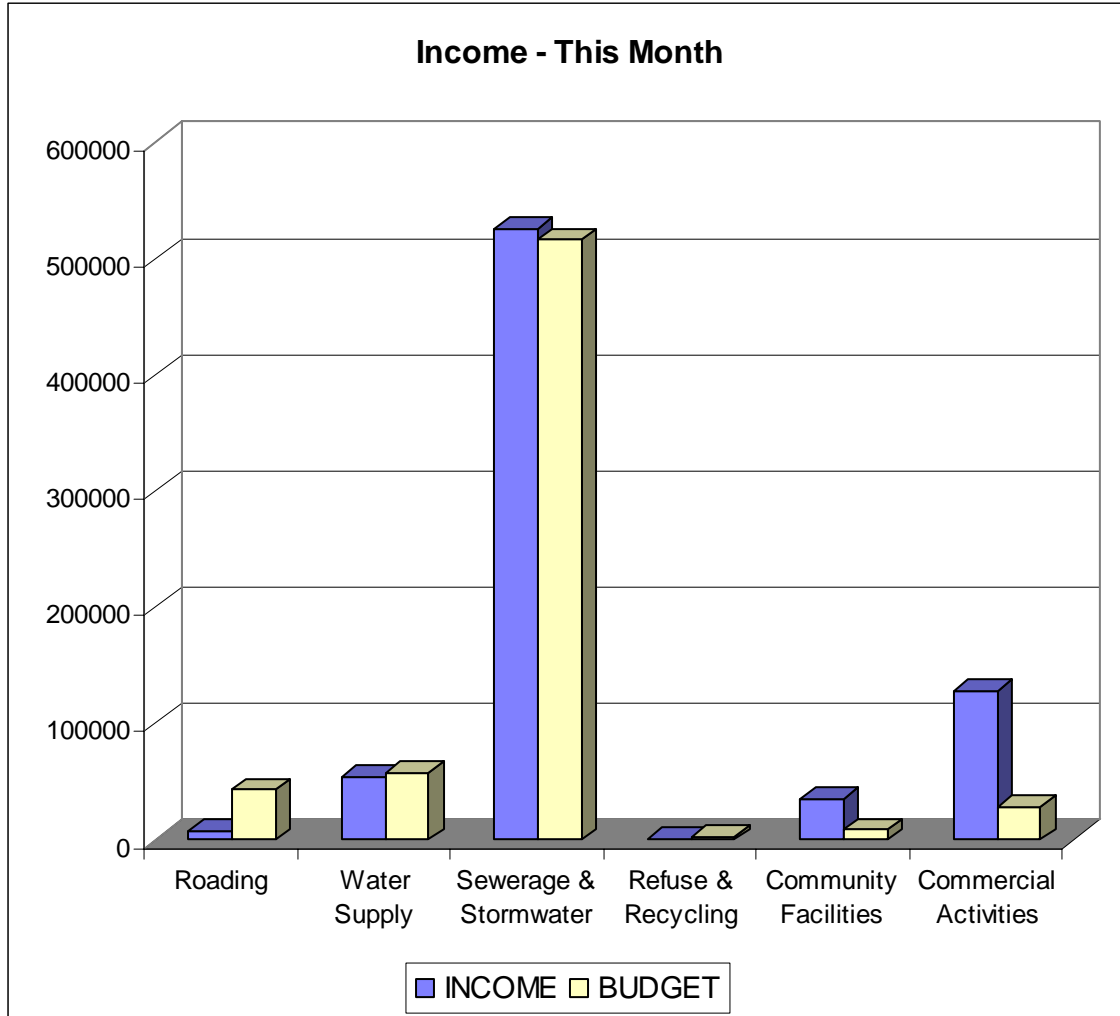
**ClassMatrix-35**

**Site:** 12001200.0EW  
**Description:** Harnetts Road  
**Filter time:** 14:00 Wednesday, 4 April 2007 => 14:00 Wednesday, 11 April 2007  
**Scheme:** Vehicle classification (AustRoads94)  
**Filter:** Cls(1 2 3 4 5 6 7 8 9 10 11 12 ) Dir(NESW) Sp(10,160) Headway(>0)

Speed (km/h)  
Speed Totals

		Class									
		1	2	3	4	5	6	7	8	9	10
<u>11</u>	<u>12</u>										
10 - 20		4	1	.	1	.	.	.	.	.	.
.		6	0.7%								
20 - 30		5	.	.	1	.	.	1	.	.	.
.		7	0.8%								
30 - 40		9	1	1	.	.	.	.	.	.	.
.		11	1.2%								
40 - 50		53	7	7	1	.	.	3	.	.	1
.		72	8.0%								
50 - 60		159	19	13	3	.	.	.	.	1	2
.		197	21.9%								
60 - 70		185	9	17	2	.	2	1	.	.	.
.		216	24.0%								
70 - 80		119	4	37	.	.	.	2	.	.	.
.		162	18.0%								
80 - 90		70	.	30	1	.	.	.	.	.	.
.		101	11.2%								
90 - 100		49	.	19	.	.	.	.	.	.	.
.		68	7.6%								
100 - 110		24	.	10	.	.	.	.	.	.	.
.		34	3.8%								
110 - 120		6	.	8	.	.	.	.	.	.	.
.		14	1.6%								
120 - 130		1	.	3	.	.	.	.	.	.	.
.		4	0.4%								
130 - 140		1	.	2	.	.	.	.	.	.	.
.		3	0.3%								
140 - 150		.	.	4	.	.	.	.	.	.	.
.		4	0.4%								
150 - 160		.	.	1	.	.	.	.	.	.	.
.		1	0.1%								
		Class Totals									
0	0	685	41	152	9	0	2	7	0	1	3
0.0%	0.0%	900									
		76.1%	4.6%	16.9%	1.0%	0.0%	0.2%	0.8%	0.0%	0.1%	0.3%

# WORKS & SERVICES BUDGET REPORT



### Expenditure - This Month

