

**KAIKOURA DISTRICT COUNCIL WORKS AND SERVICES
COMMITTEE MEETING HELD AT 9.00AM ON
WEDNESDAY 19 MARCH 2008 IN MEMORIAL HALL
SUPPER ROOM, ESPLANADE, KAIKOURA.**

AGENDA

1. Apologies

2. Matters of Importance to be raised as Urgent Business.

3. Matters Arising from Report of 20/02/2008

page 55

4. Minutes Action and Issues List Update

| MEETING | ACTION REQUIRED | BY | DATE ACTIONED |
|------------------|---|---|--|
| | 18 APRIL 2007 | | |
| Works & Services | Form a strategy with Environment Canterbury, Department of Conservation and Police to manage motorbikes on reserve at South Bay following petition from South Bay residents | Asset Manager & Engineering Support Officer | Taskgroup formed. Refer item 11 of Roading Report – Page 15 |
| | 19 SEPTEMBER 2007 | | |
| Works & Services | Arrange possible meeting with graffiti offender, parents, CEO, Mayor and 2 Councillors | CEO | In Progress |
| | 21 NOVEMBER 2007 | | |
| Works & Services | Prepare a priority programme for undergrounding of power in the district. | Gallo | Awaiting feedback from Mainpower as to priority areas for underground power. |
| | 20 FEBRUARY 2008 | | |
| Works & Services | Arrange for pergola at pensioner cottages to be stored by Lions Club during building works | Asset Manager / Councillor Holmes | In Progress |

5. Reports:

- **Works and Services Report** *page 1*
- **Roading Report** *page 5*
- **Works and Services Budget Report** *page 17*

6. Urgent Business

WORKS & SERVICES REPORT

General Works

1.0 WATER SUPPLY

Urban Water

Operations

The headwork (Waimangarara Source) was cleaned due to low flows and ingress of air into the system during the reported month.

Water Demand

Table 1 below shows the average water demand for the reporting month measured from the new source.

| <i>Water Demand(m³/day)</i> | | | |
|--|------------|-------------|-------------|
| | <i>min</i> | <i>avg</i> | <i>max</i> |
| <i>Dec 2007</i> | 3893 | 4770 | 5621 |
| <i>Jan 2008</i> | 3638 | 4648.5 | 5569 |
| <i>Feb 2008</i> | 2994 | 4200 | 5331 |

Table 1: Water demand for reporting period

Kincaid Water Supply

The presence of Ecoli was reported in one of the water samples however, subsequent tests were found to be satisfactory. The failure was related to the breaking down of the chlorination system due to a lightning strike. The damaged components have since been replaced. Apart from this event the system operated fairly well during the reporting month.

Capital Assistance Programme (CAP Funding)

Council is presently awaiting contractual agreements from the Ministry of Health for the implementation of works for Peketa, Oaro and the East Coast Supply.

The Kincaid Committee will need to make a decision as to where they go with the limited funding received as discussions with the Ministry's representative has indicated that the scope of works as per the application will need to be implemented.

2.0 SEWER SYSTEM

Urban Reticulation

Table 2 below shows the average sewage flows for the reporting month as measured at the Mill Rd pumping station.

| <i>Sewage flows (m³/day) – Mill Rd</i> | | |
|--|-------------------|-------------------|
| | <i>avg</i> | <i>max</i> |
| Dec 2007 | 1879 | 2378 |
| Jan 2008 | 2075 | 2299 |
| Feb 2008 | 2030 | 2402 |

Table 2: Sewage generated for reporting period

The measured Dissolved Oxygen (DO) averaged 2.7mg/l for the month of February and 3.7 for the month of January

There has been some fluctuation in the DO during the reporting months with DO falling below 2 on some days during the reporting month.

There was one report of odour from the facility however upon investigation this was from the anaerobic pond, the odour was abated immediately by placing straw (hay) over the surface as per the odour management plan.

3.0 STORMWATER

Urban Stormwater

There has been no operational problem during the reporting month.

4.0 PARKS & RESERVES

The parks and reserves areas are fairly maintained. Despite the occasional rain the Contractor's programme of works is still on schedule.

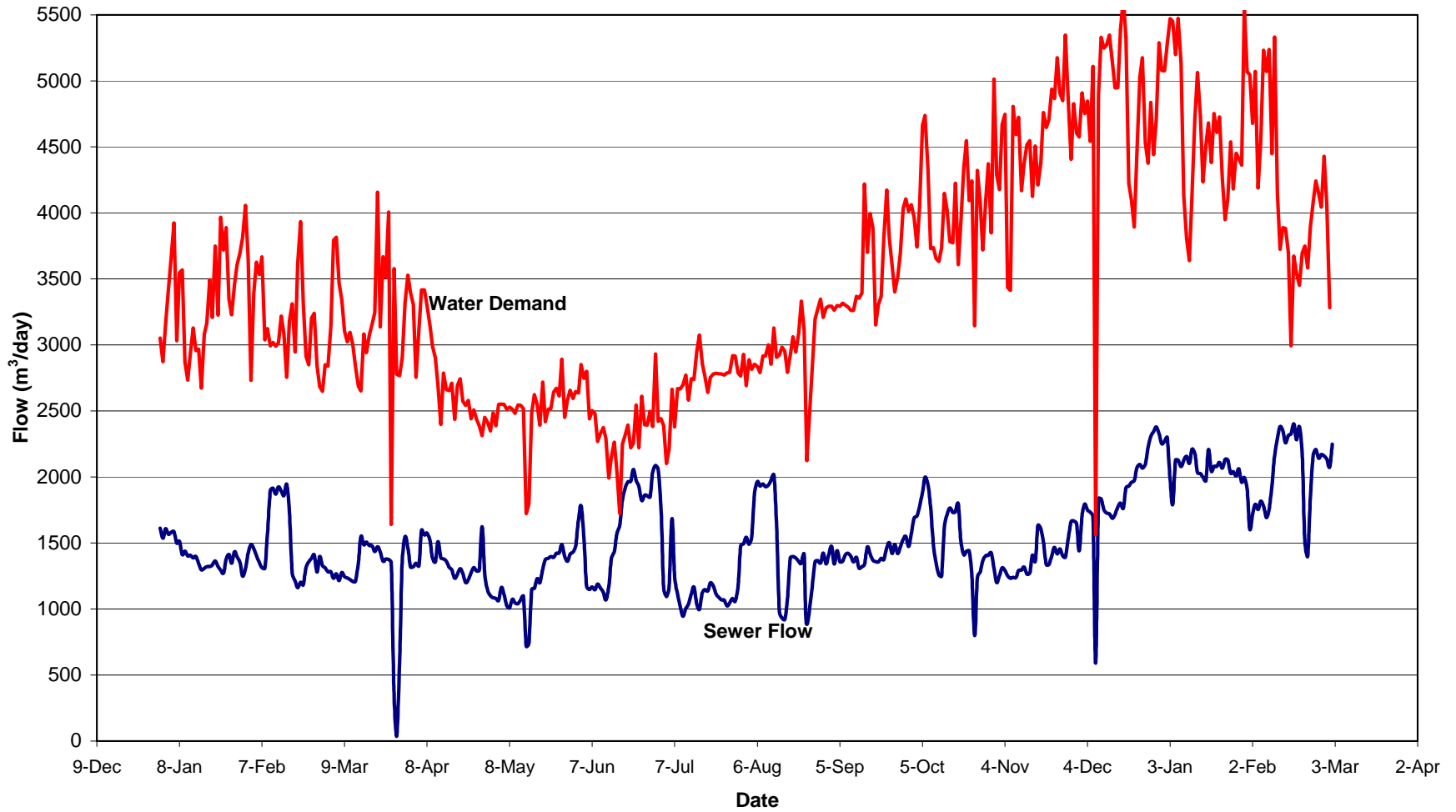
5.0 PUBLIC TOILETS

There is not much to report on these facilities for the reporting month.

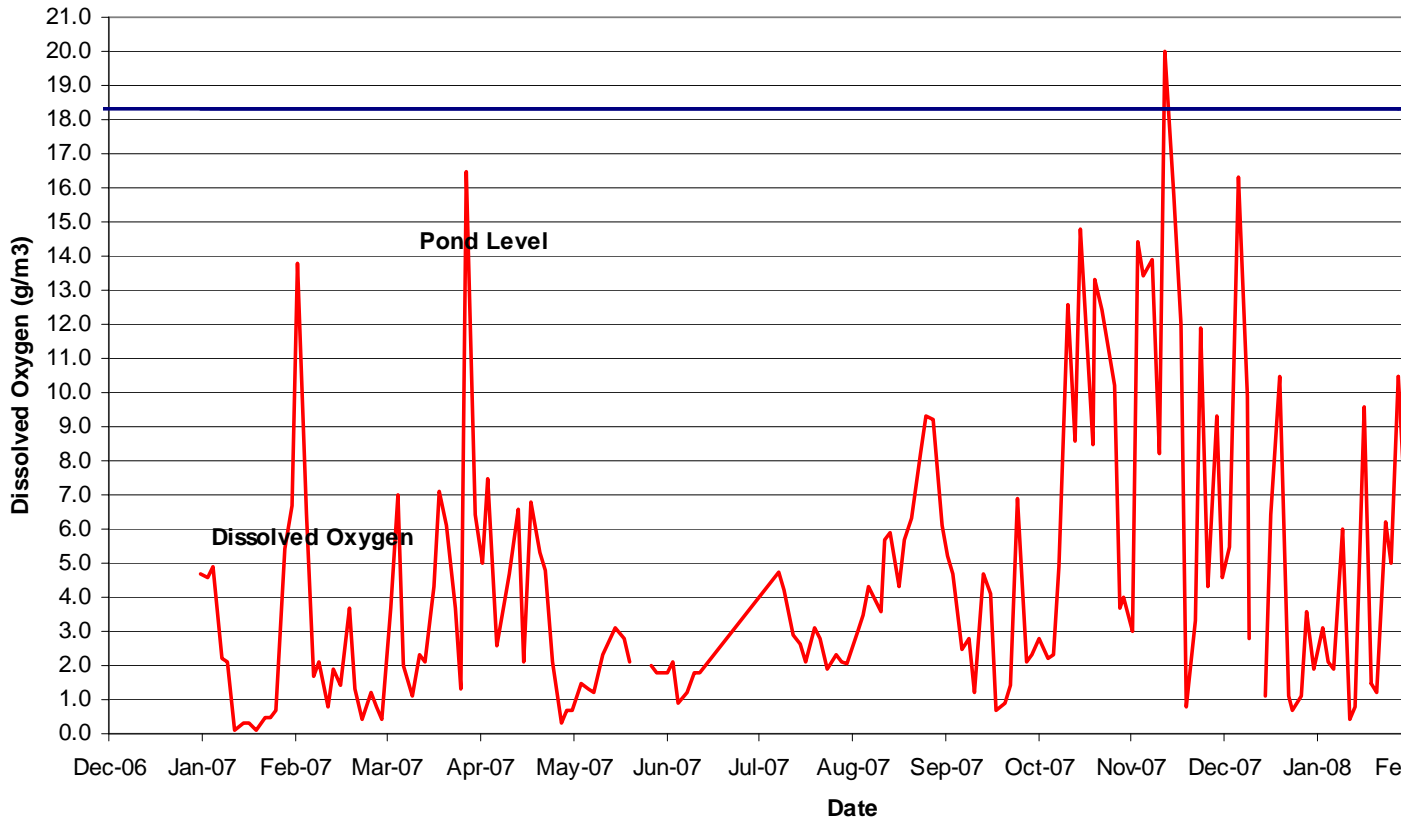
6.0 PENSIONER UNITS

The construction of the 4 new pensioner units commenced on 4th March 2008 and is expected to be completed by the end of June 2008.

Water Demands & Sewer Flows
(Jan 07- Feb 08)



**Kaikoura Oxidation Pond
DO & Water Levels
(Jan 2007 to Feb 2008)**



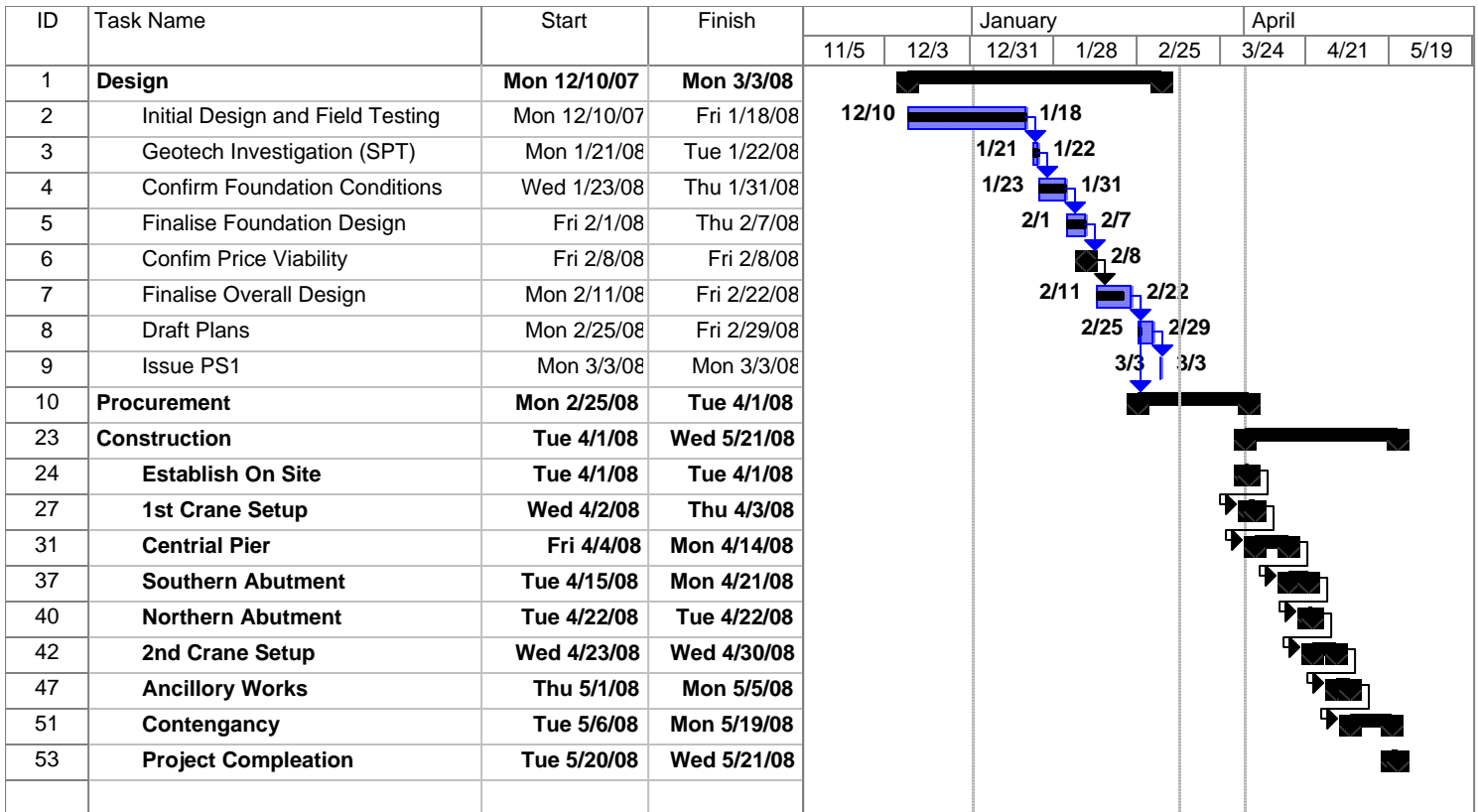
ROADING REPORT

1.0 SUMPS & STREET SWEEPING

Mechanical sweeping occurred in February. There was an issue with the truck sucking up some parts of the seal on some roads. The affected areas have been repaired by the contractor. The probable cause is the high suction level, the sub contractor has provided input and will be adjusting the suction level.

2.0 MIDDLE CREEK BRIDGE – WORK PROGRESS

The Upgrade works for Middle Creek Bridge is progressing, below is the updated program of works :



3.0 AREA WIDE TREATMENT

The area wide treatment on Inland Road is completed; total estimated length affected is 450m.

4.0 DUST SUPPRESSION TRIAL

A 150m trial length strip of OTTA seal dust suppression has been placed on McInnes Road and a 250m trial strip will be placed on Maui Street mid March.

5.0 MAINTENANCE GRAVELLING 2007/08

The Roads maintenance gravelling program for this financial year 2007/2008 is programmed to be completed in May – June 2008.

6.0 VEGETATION CONTROL

Inland Road and Scarborough mow completed in February.

7.0 SPEED LIMIT REVIEW

The speed limit review has been scheduled for discussion at a workshop on the 27th March 2008.

8.0 TRAFFIC COUNT

Traffic Count for the month of February included the following roads

Bay Paddock Road – 137 Vehicles per day (vpd)

Beach Road – Kaikoura End – 393 vpd

Beach Road Hapuku End – 135 vpd

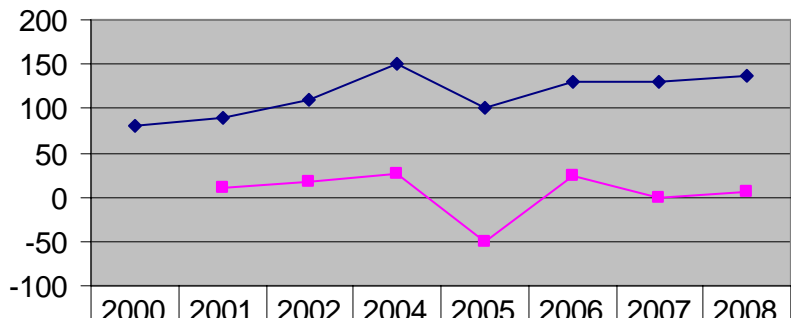
The average daily count for Bay Paddock Rd for 2008 has increased by 5% since last year, and the overall growth rate for traffic per year is 8.9% since 2000. 5% of vehicles were recorded as travelling at more than 100 kph with three vehicles recorded at over 140 kph.

The site used for vehicle movements for Beach Rd – Hapuku end has been changed this year to 50m south of the railway crossing on Factory Rd to capture more of the resident movements in the settlement. An increase of 40% was noted compared to last year, but this was probably mainly due to the change of site so it would be incorrect to make a comparison to previous years. The majority of vehicles were travelling below the speed limit with only 1.5% travelling above 50 kph.

The Kaikoura end of Beach Rd has seen a very slight increase of 0.8% in traffic volume since 2008 and an average annual growth rate of 10.1% since 2000. Less than 3% of vehicles were recorded at speeds over 100 kph,

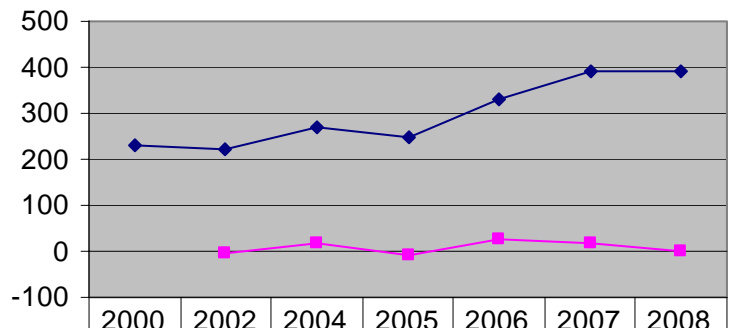
The figures below show the Annual Average Daily Traffic Trend from 2000 to 2008

Bay Paddock Road AADT



| | | | | | | | | |
|-----------------|----|------|------|------|-------|------|-----|-----|
| ◆ AADT | 80 | 90 | 110 | 150 | 100 | 130 | 130 | 137 |
| ■ % Growth Rate | | 11.1 | 18.2 | 26.7 | -50.0 | 23.1 | 0.0 | 5.1 |

Beach Road - Kaikoura End



| | | | | | | | |
|-----------------|-----|------|------|------|------|------|-----|
| ◆ AADT | 230 | 220 | 270 | 250 | 330 | 390 | 393 |
| ■ % Growth Rate | | -4.5 | 18.5 | -8.0 | 24.2 | 15.4 | 0.8 |

We are continuing to provide the police with the traffic count results.

9.0 MONTHLY PERFORMANCE REPORT

| Performance Indicators | Type | Response | Number | Within Period | % Acceptable |
|-----------------------------|-----------|----------|--------|---------------|--------------|
| Surfacing | Strategic | 6 Weeks | 1 | 1 | 100% |
| Surfacing | Local | 8 Weeks | | | |
| Digouts | Strategic | 6 Weeks | | | |
| Digouts | Local | 8 Weeks | | | |
| Depressions | Strategic | 6 Weeks | | | |
| Depressions | Local | 8 Weeks | | | |
| Edge Break | Strategic | 6 Weeks | | | |
| Edge Break | Local | 8 Weeks | | | |
| Shoulder Maintenance | Strategic | 6 Weeks | | | |
| Shoulder Maintenance | Local | 8 Weeks | | | |
| Potholes | Strategic | 2 Days | | | |
| Potholes | Local | 7 Days | 1 | 1 | 100% |
| Detritus & Slip Removal | Strategic | 2 Days | | | |
| Detritus & Slip Removal | Local | 7 Days | 3 | 3 | 100% |
| Drainage | All | 12 Hours | 8 | 8 | 100% |
| Unsealed Pavement Potholes | Local | 7 Days | 515 | 515 | 100% |
| Unsealed Pavement Digouts | Local | 6 Weeks | | | |
| Edge Marker Post | All | 7 Days | | | |
| Signs and Chevrons | All | 24 Hours | 6 | 5 | 83% |
| Sight Rails and End Markers | All | 48 Hours | | | |

10.0 SUMMARY OF COMPLETED WORK FOR FEBRUARY

| Road Name | Potholes | Digouts | Other Sealing | Emergency Work | Grading | Surface Debris | Drainage | Signs | Vegetation |
|-----------------------|----------|---------|---------------|----------------|---------|----------------|----------|-----------------------|------------|
| A VOCA STREET | | | Footpath | | | | | | |
| BAY PADDOCK ROAD | 1 | | | | | | | | |
| BAYVIEW STREET | | | | | | | Sump | | |
| BEACH ROAD | | | | | 13th | | | | |
| BLUE DUCK VALLEY ROAD | 72 | | | | | | | | |
| CLARENCE VALLEY ROAD | 342 | | | | | | | | Tree down |
| ESPLANADE ROAD | | | | Rattails | | | | Clean 1 Reinsate 1 | |
| GRAYS LANE | | | | | | | | Clean sign | |
| HASTINGS STREET | | | | | | Sweep | | | |
| INLAND ROUTE RS00/0 | | | | | | | | | Done |
| INLAND ROUTE RS16/0 | | 140m2 | 3150m2 | | | | 900m | | Done |
| KAIKOURA DUMP ROAD | | | | | | | | | |
| KAIKOURA LOOKOUT ROAD | | | | | | | Culvert | | |
| KOWHAI FORD ROAD | | | | | 13th | | | | |
| MARGATE STREET | | | | | | | | Clean sign | |
| MATARIKI ROAD | 58 | | | | | | | | |
| MOUNT FYFFE ROAD | 2 | | | | | | | | |
| PUHI PUHI ROAD | 12 | | | | 12-13th | | | | |
| SCARBOROUGH STREET | | | | | | | | Clean sign | |
| SCHOOLHOUSE ROAD | 1 | | | | | | | | Feb Mow |
| SILVER SPRINGS ROAD | 28 | | | | | | | | |
| SOUTH BAY PARADE | | | | | | | Sump | | |

11.0 SAFETY – SOUTH BAY PARADE ROAD RESERVE: MOTORCYCLE AND QUAD BIKE USE

The task force consisting of representatives from Department of Conservation, Police, and three Councilors: B Woods, M McChesney and J Macphail held a meeting on the 19th February 2008. It was resolved that a meeting be held with the affected parties/residents which took place on the 29th February 2008.

The residents and some of the users of the motor bikes have agreed to address the safety issues raised by implementing the following:

- 1 – Education – Prepare a leaflet and distribute this to all properties in South Bay;
- 2 - Advisory Signage- limit speed to 20kph within the reserve area which is referred to as a transit zone. Kaikoura District Council will assist with the signage

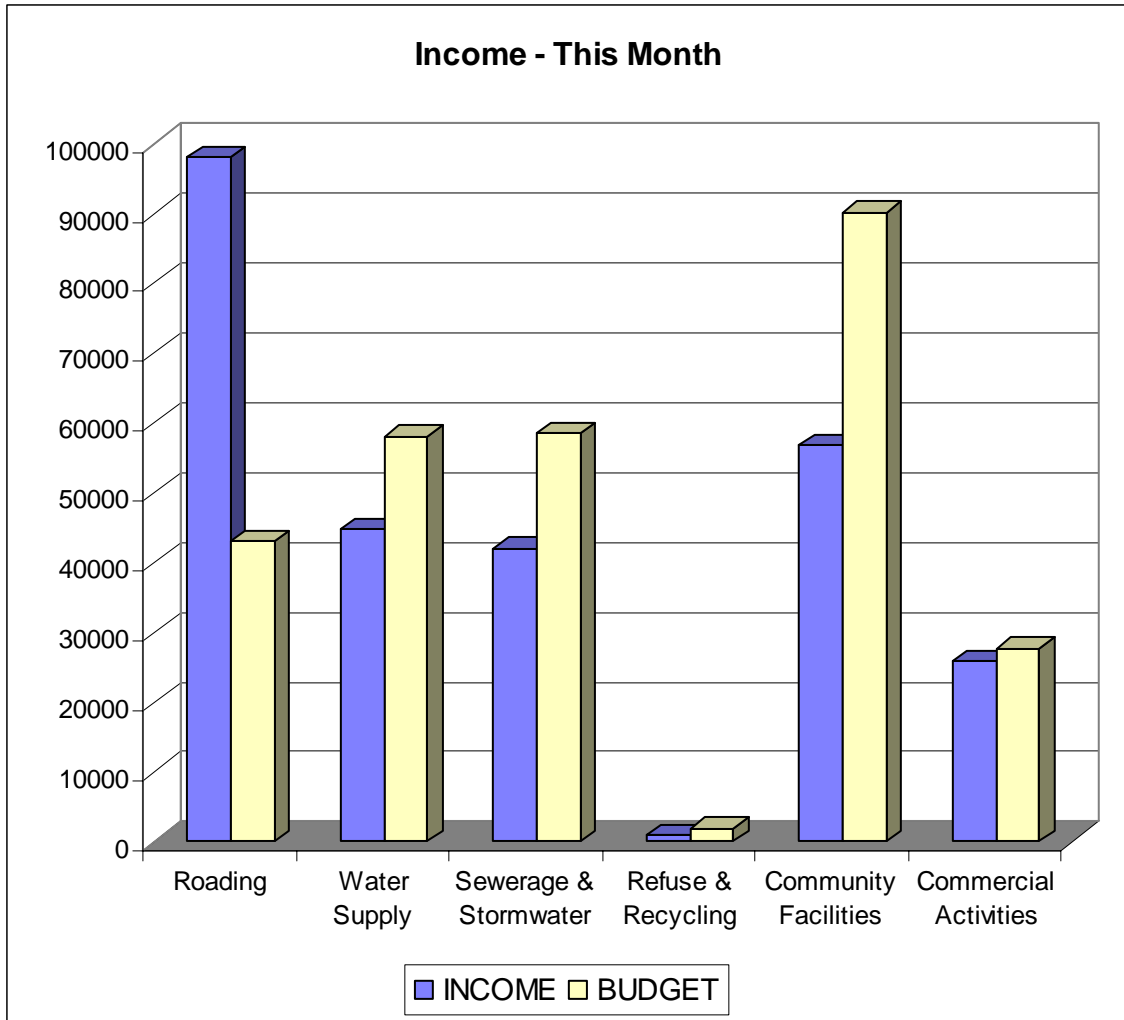
12.0 TRAFFIC CONTROL

There were no quality issues in February 2008 and no traffic delays on the Kaikoura network in the last four weeks

13.0 QUALITY AND ENVIRONMENTAL

There were no quality and environmental issues in February.

WORKS & SERVICES BUDGET REPORT



Expenditure - This Month

