

**KAIKOURA DISTRICT COUNCIL WORKS AND SERVICES
COMMITTEE MEETING HELD ON WEDNESDAY 21
OCTOBER 2009 IN MEMORIAL HALL SUPPER ROOM,
ESPLANADE, KAIKOURA.**

AGENDA

1. *Apologies*

2. *Matters of Importance to be raised as Urgent Business.*

3. *Matters Arising from Report of 16/9/2009* *page 67*

4. *Minutes Action and Issues List Update*

MEETING	ACTION REQUIRED	BY	DATE ACTIONED
	18 FEBRUARY 2009		
Works & Services	Provide an update on Stock crossings	Asset Manger	Refer agenda page 6

5. *Reports:*

- **Works and Services Report** *page 1*
- **Roading Report** *page 6*
- **Works and Services Budget Report** *page 11*

6. *Works & Services Public Excluded Session*

Moved, seconded that the public be excluded from the following parts of the proceedings of this meeting, namely

a. Confirmation of Minutes of Works & Services Public Excluded meeting on 16/9/2009

The general subject matter to be considered while the public is excluded, the reason for passing this resolution in relation to each matter, and the specific grounds under Section 48(1) and 7(2)(i) of the Local Government Information and Meetings Act 1987 for the passing of this resolution are as follows:

General subject of each to be considered	Reason for passing this resolution in relation to each matter	Grounds of the Act under which this resolution is made
Report of the Works & Services Public Excluded meeting 16/9/2009	The exclusion of the public from the whole or the relevant part of the proceedings of the meeting is necessary to enable the Local Authority to deliberate in private on its decision or recommendation.	Section 48(1)(a) and 7(2)(i)

7. *Urgent Business*

WORKS AND SERVICES REPORT

1.0 WATER SUPPLY

Urban Water

Operations – Kaikoura Urban Supply

During the month of September the chlorination system at the Mackle's treatment plant malfunctioned and required a valve adjusting repair kit to rectify the malfunctions. This was ordered and has since been received and installed. For the period of the malfunction, the chlorine dosage was increased to ensure adequate chlorination was occurring.

In addition to this some repair works was carried out on the larger of the Fords reservoirs and entailed repairing a section of the liners. During the repair works it was observed that there is heavy siltation within the tank and this will need to be addressed at a later stage.

Operations – Suburban Supply

During the reporting month we received two complaints from residents regarding lack of water, as a result the gallery was cleared of silt and debris and the system restored. Also during the month of September and specifically between the 25th and 28th heavy rain resulted in turbid water entering the distribution system effectively registering high levels of ecoli in the water sample, the three consecutive samples taken and tested were within the drinking water standards.

The domestic consumption averaged 14m³/day for the reporting month.

Water Demand

Table 1 below shows the water demand for the reporting month measured from the Mackles bore while figure 1 on page 4 shows the yearly cumulative water demand since 2006.

For the month of September 2009, the water demand totalled 90,981m³ which was 10,311m³ more than the previous month of August but significantly less than the same period last year where the demand was 102,694m³.

<i>Water Demand (m³/day)</i>				
	<i>Min (m³)</i>	<i>Avg (m³)</i>	<i>Max (m³)</i>	<i>Total Demand (m³)</i>
<i>June 2009</i>	2031	2431	2612	72943
<i>July 2009</i>	2189	2362	2600	73,209
<i>August 2009</i>	2357	2602	3017	80670

Table 1: Water Demand for reporting period

Kincaid Water Supply

During the reporting month the intake to Kincaid water supply system was shut down for approximately 3 days (25- 28 September 2009 as shown in figure 1 below) as a result of heavy rain. During this period the storage was able to satisfy the demand.

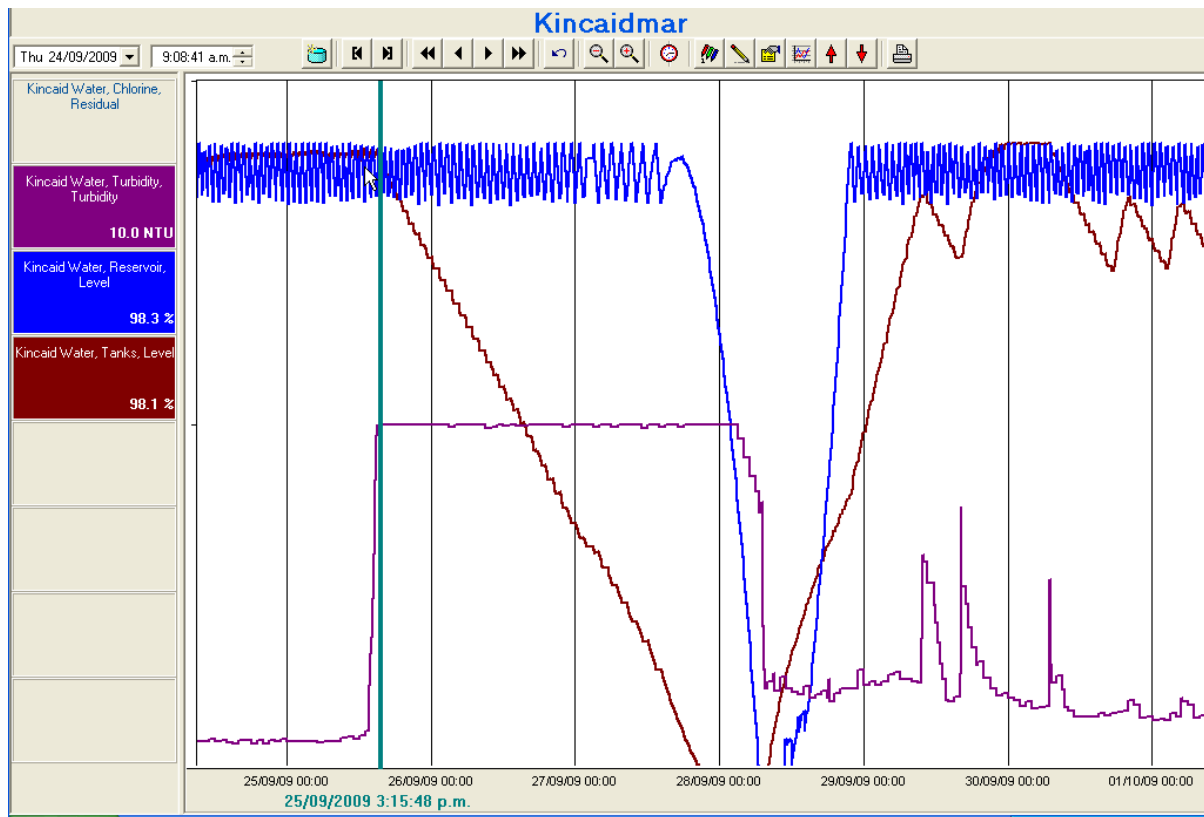


Figure 1: Telemetry output of Kincaid water Supply System Turbidity and Tank levels

Capital Assistance Programme (CAP)

At present we are still awaiting contract documents from the Ministry of Health to be able to implement the approved water projects. From discussions with the Ministry in Wellington these documents should be with Healthpac and some Councils have already received their contract.

2.0 SEWER SYSTEM

Table 2 below shows the average sewage flows for the reporting month as measured at the Mill Road pumping station while figure 2 on page 5 shows the sewage generation to date for 2009 in comparison to previous years.

The total flow for the month of September 2009 was approximately 41,897m³.

<i>Sewage flows (m3/day) – Mill Rd</i>			
	<i>avg</i>	<i>max</i>	<i>Total Flow</i>
<i>July 2009</i>	1482	2162	45,949
<i>August 2009</i>	1206	1651	38,609
<i>Sept 2009</i>	1397	1773	41,897

Table 2 : Sewage generated for reporting period

The measured Dissolved Oxygen (DO) averaged 3.4mg/l for the reporting month whereas it averaged 4.1mg/l for the month of August. Towards the end of September algal bloom resulted in the pond registering low DO levels but has since recovered.

3.0 STORMWATER

Urban Stormwater

There were no major issues for the reporting month.

4.0 PARKS AND RESERVES

In general the parks and reserve areas were fairly maintained despite the rainy days which have set back the contractor.

5.0 PUBLIC TOILETS

In general the facilities were fairly maintained during the period.

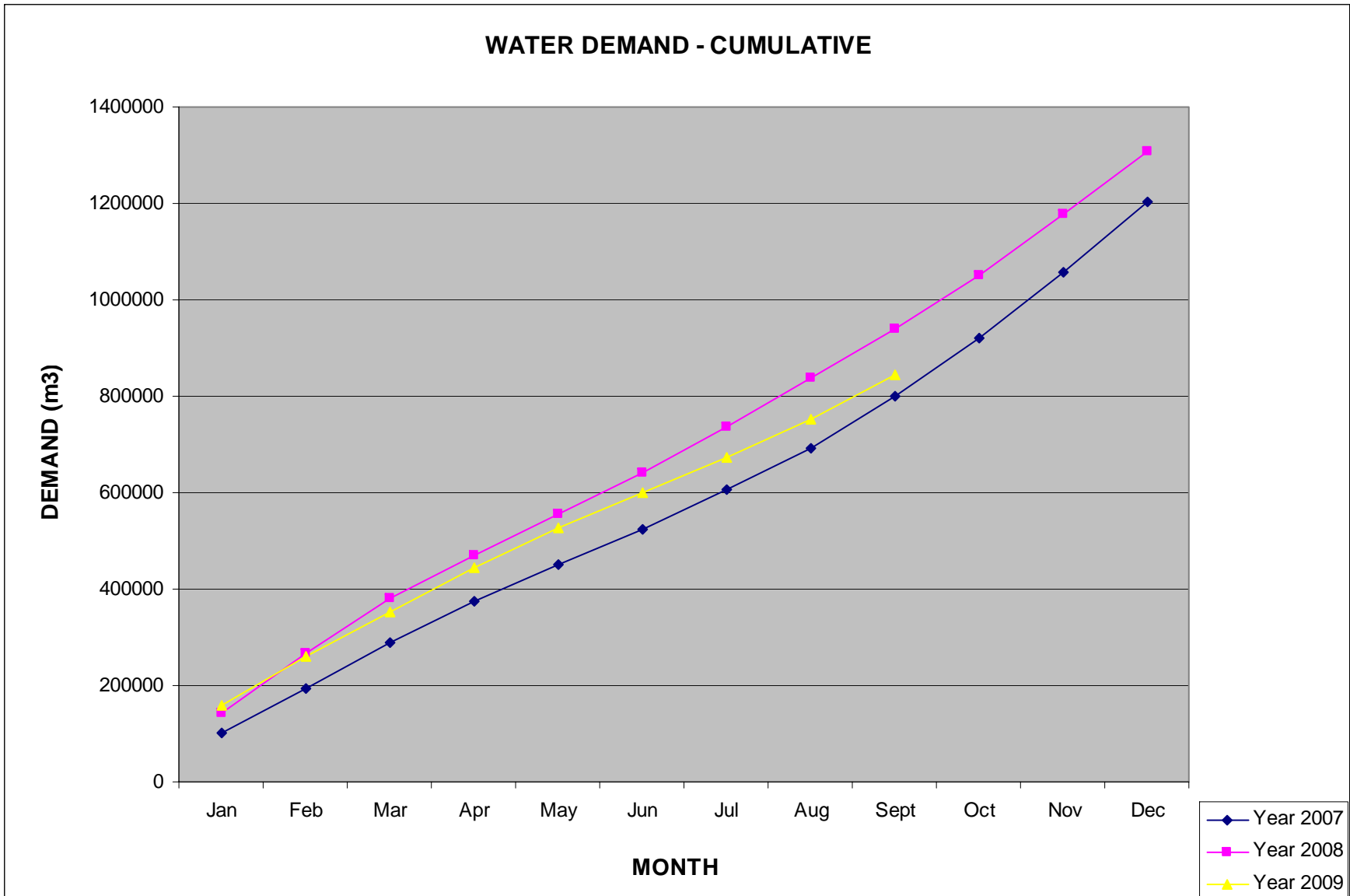


Figure 1: Yearly Cumulative Water demand

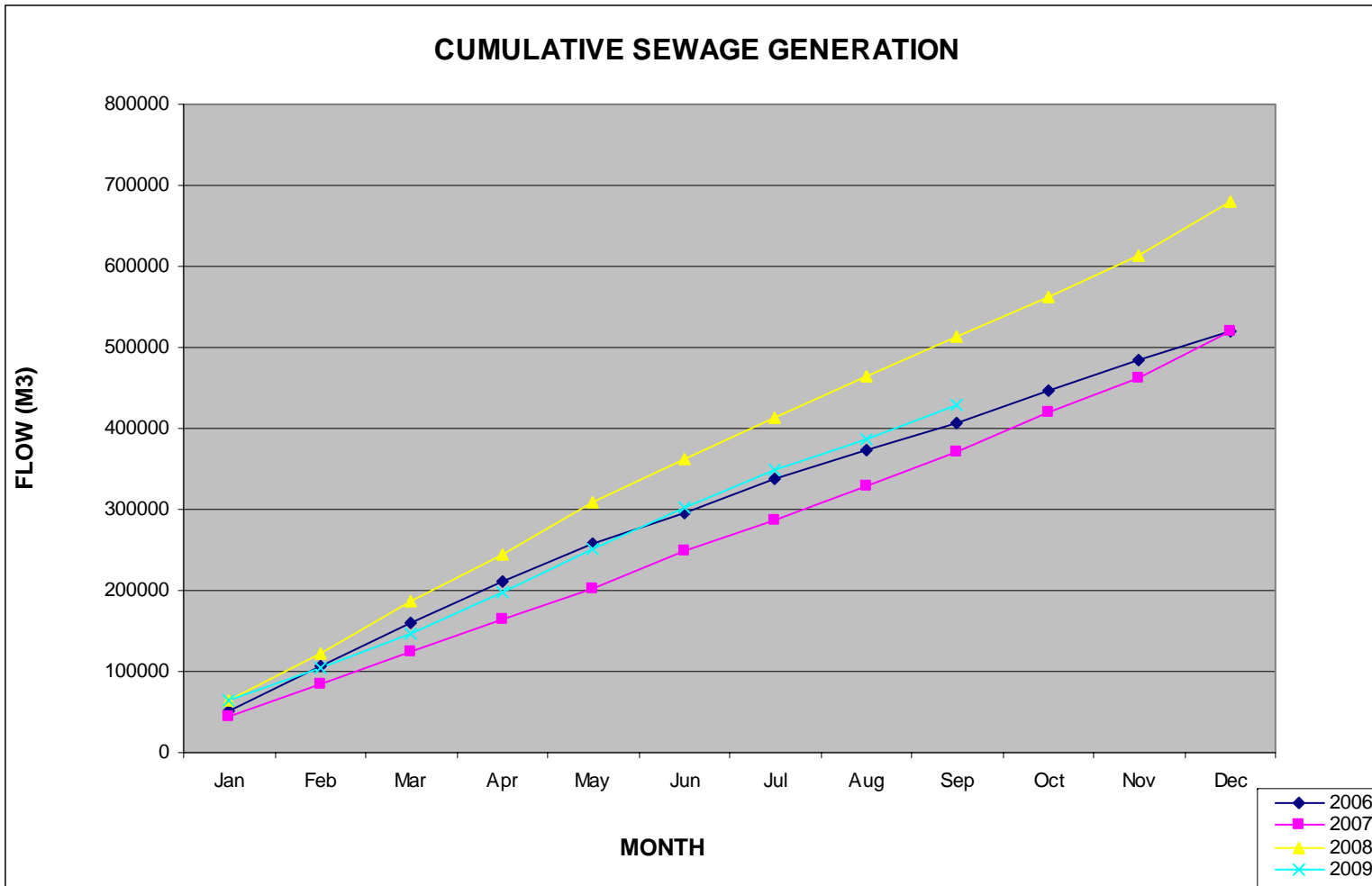


Figure 2: Yearly Sewage Generation

ROADING REPORT

1.0 Routine Bridge Inspections

Council has received the pricing and will now generate a maintenance programme for the contractors.

2.0 National Land Transport Programme 2009-2012

The National Land Transport Programme (NLTP) for 2009- 2012 has been approved by the New Zealand Land Transport Agency.

This is to inform Council that the subsidy funding requested for the Walking and Cycling programme for Kaikoura for the next 3 years and the Ludstone Road intersection project have not been approved.

A total of \$800,000.00 and \$100,000.00 was submitted to New Zealand Land Transport Agency for walking and cycling and for the Ludstone Road intersection project respectively.

The lack of subsidy for these projects will mean that Council will need to revisit the pledged projects namely the Ludstone Road Intersection Upgrade and walking and cycling.

3.0 Stock Crossings

There has been some opposition to installing the concrete crossings, with the belief that the initial shared cost of installing the crossing would not pay for itself over the life of the crossing. It has been suggested, that cost sharing for the maintenance of the sealed road, where the cattle cross, be considered instead.

4.0 Cycle Stand: West End

The beams for the stand have been cut and are waiting to be fixed. The design has been finalised, with consultation from a local sculptor, and the metal for the project has been ordered. The project is expected to be completed by the end of October.

5.0 Basking Shark

An interpretation is currently being designed with consultation with the artist, DOC and the Runanga. Other businesses will be consulted once an outline has been established.

6.0 Traffic Count

There was no traffic count scheduled for September, so on request of Council, the counter was placed on Red Swamp Road, between Mill Road and Kowhai Ford Road.

The Annual Average Daily Traffic (AADT) for the new position was 460 in comparison with 140 AADT at the original site on Red Swamp Rd (between Schoolhouse Road and Postmans Road).

Over the sample week, 351 Heavy Commercial Vehicles (HCVs) or 11% of all traffic travelled through the new site. This compares to 133 HCVs at the old site, although they made up 13.7% of all traffic.

Less than 2% of total traffic was travelling above the posted 100kph speed limit.

In October, the traffic counter will be moved to Kowhai Ford Road, to monitor the number of HCVs travelling along this road.

Copies of the traffic count reports are sent to the Kaikoura Police for their information.

7.0 The Loss and Damage of Traffic Signs

There is concern about the amount of traffic signs that are stolen, vandalised with graffiti or damaged by cars in the district. At least two signs are damaged or stolen each week. This means that, not only do the costs of the new signs have to be met, but there is also a significant outlay for reinstallation of the signs.

8.0 Quality

There were no quality issues during September.

9.0 Environmental

There were no environmental issues to report for the period.

10.0 Traffic Control

There were no traffic control issues to report for the period.

11.0 Vegetation Control

Routine and cyclic activities are being completed.

12.0 Emergency Work

Nothing to note.

13.0 Inspections

The monthly roading inspection is being carried out as specified.

14.0 Monthly Performance Report

	Performance Indicators	Type	Response	Number	Within Period	% Acceptable
3	Surfacing	Strategic	6 Weeks			
4	Surfacing	Local	8 Weeks			
5	Digouts	Strategic	6 Weeks			
6	Digouts	Local	8 Weeks			
7	Depressions	Strategic	6 Weeks			
8	Depressions	Local	8 Weeks			
9	Edge Break	Strategic	6 Weeks			
10	Edge Break	Local	8 Weeks	1	1	100%
11	Shoulder Maintenance	Strategic	6 Weeks			
12	Shoulder Maintenance	Local	8 Weeks			
13	Potholes	Strategic	2 Days			
14	Potholes	Local	7 Days			
15	Detritus & Slip Removal	Strategic	2 Days			
16	Detritus & Slip Removal	Local	7 Days			
17	Drainage	All	12 Hours			
18	Unsealed Pavement Potholes	Local	7 Days			
19	Unsealed Pavement Digouts	Local	6 Weeks			
20	Edge Marker Post	All	7 Days			
21	Signs and Chevrons	All	24 Hours	3	2	67%
22	Sight Rails and End Markers	All	48 Hours			

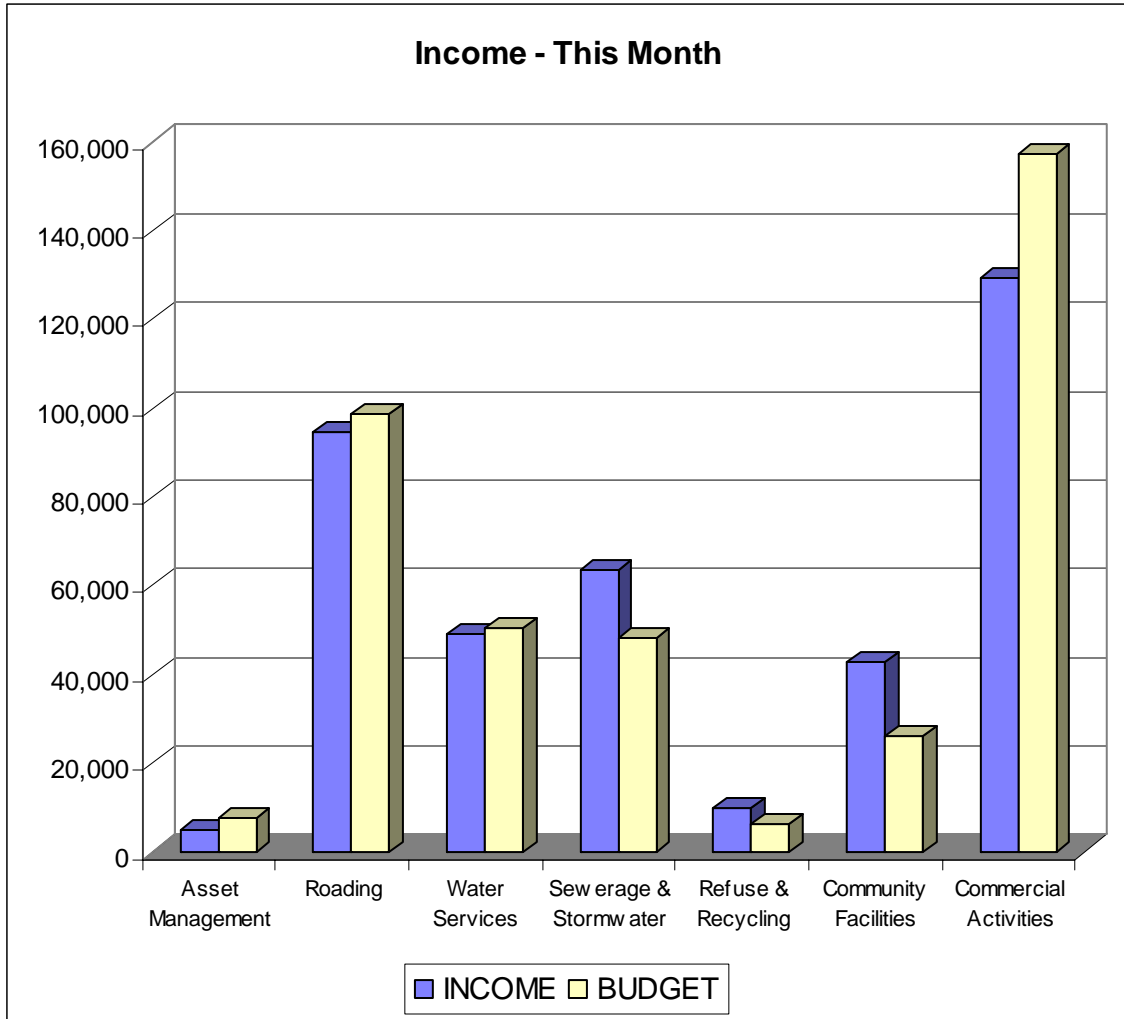
15.0 Summary of Work Completed in the Period

Road Name	Potholes	Edge Break	Other Sealing	Grading	Surface Debris	Drainage	Vegetation
BEACH ROAD				Grade			
BLUE DUCK VALLEY ROAD	16					Water tables	
CHAPMANS ROAD				Grade			
ESPLANADE ROAD			Second coat seal		Storm damage end of sea wall		
FACTORY ROAD				Grade			
GRANGE ROAD				Grade			
GREEN LANE				Grade			
HAWTHORN RD EAST		Edge breaks					
HAWTHORN ROAD WEST		Edge breaks					
INLAND ROUTE RS00/0							Mowed
INLAND ROUTE RS16/0					Remove Ice grit		Mowed
KOWHAI FORD ROAD		Edge breaks					
LUDSTONE ROAD		Edge breaks					
MOUNT FYFFE ROAD				Grade			
MOUNT FYFFE ROAD SOUTH		Edge breaks					
POSTMANS ROAD				Grade			
PUHI PUHI ROAD				Grade			
RED SWAMP ROAD		Edge breaks					
SCARBOROUGH STREET							Mowing
SCHOOLHOUSE ROAD				Grade			
SKEVINGTONS ROAD				Grade			
TOPLINE ROAD				Grade			
UNNAMED ROAD						soak pit Top 10	

Work Progress on the New Wharf

The piles and fenders have now been drilled and placed and the final half of the deck has been fitted. All outstanding work, including the concreting of the joints and servicing with electricity and water, should be completed by the end of October.

WORKS AND SERVICES BUDGET REPORT



Expenditure - This Month

