

Refuse & Recycling

Goal

To progressively increase the volumes of solid waste diverted from landfill in the district, with a view to ultimately achieving zero waste to landfill.

Nature and Scope of Activity

Kaikoura's Resource Recycling Centre is the culmination of Council's Zero Waste Policy. Where previously there existed only a dump, the facility now hosts a composting facility for green waste and organics, a demonstration worm farm, a recycling centre able to cater for anything recyclable, a hazardous waste disposal facility, and a training centre where courses are held for students to learn about our zero waste strategies and gain hands on experience. Innovative Waste Kaikoura have developed other projects outside their core tasks, another being Trees for Travellers where native trees are sold to tourists and the income is put back into resource recovery.

The resource consent for operating the landfill still has over 25 years to run, however even though the recycling facility boasts over 55% diversion of waste materials from landfill, the growth of the district is placing increasing pressure on the capacity of the landfill. As a result Council is being forced to consider either developing a new facility or joining the Kate Valley regional landfill either as a joint venture shareholder, or by sending residual waste to the landfill and pay per tonne of waste disposed of. This will most likely happen within the next six years; the financial implications of this are enormous, and Council is determined to continue at the existing site for as long as it is able.

Because of the increased volume of waste with the growth of the district, resources put into this activity will need to match the growth even just to maintain the current diversion rate from landfill. Innovative Waste Kaikoura's target is to increase the diversion rate by 5% per year and achieve the district's zero waste to landfill by 2015.

Effects on the Community

The Resource Recycling Centre has, since its instigation, had significant social and economic benefits for the community. Innovative Waste Kaikoura has a policy of only employing people from the WINZ register, and in the last five years has employed and stair-cased over 20 people, 14 of which remain as core staff.

Innovative Waste Kaikoura Ltd is leading the way to zero waste, and is receiving international recognition for its success. The weekly recycling pickup is a free service widely used by the community, and construction companies are contacted to encourage recycling their demolition and construction materials wherever possible. All of this been achieved at the same cost as conventional landfilling.

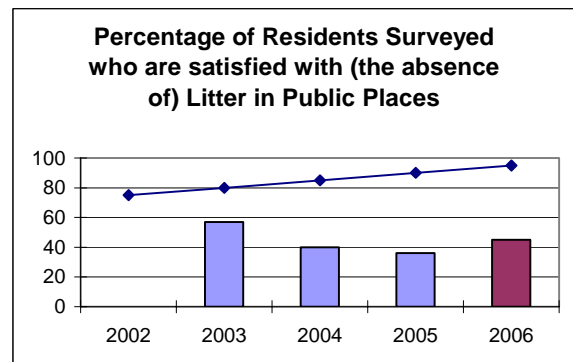
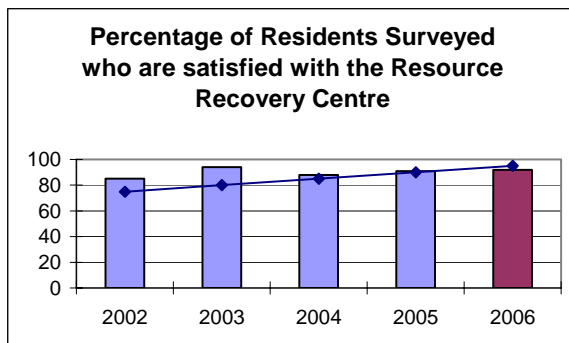
Community Outcomes

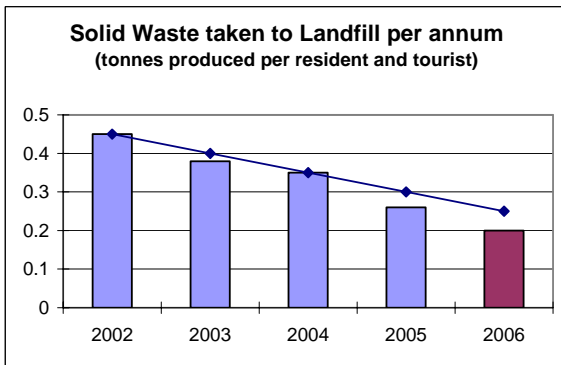
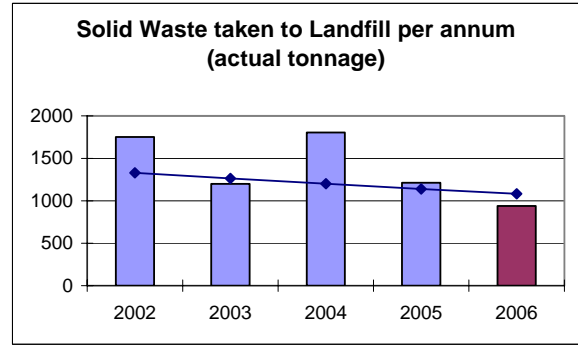
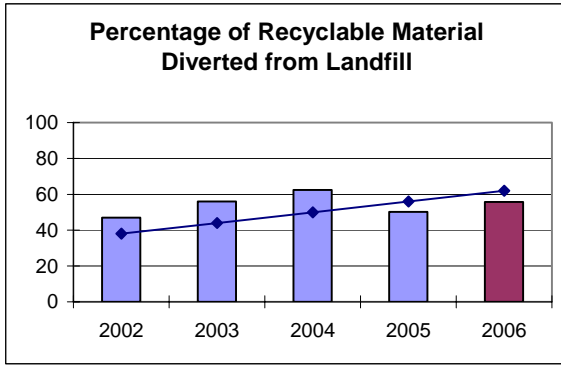
The following table highlights how Refuse & Recycling contributes to the achievement of Community Outcomes.

Community Outcome	How the Refuse & Recycling Activity Contributes	Performance Measure
Sustainable Development	By providing adequate infrastructure and services, appropriately funded, to meet future development needs	Percentage of residents surveyed who are satisfied with the Resource Recovery Centre
Environmental Protection and Enhancement	By preserving the scenic and amenity values that ensure a natural and tranquil Kaikoura,	Percentage of residents surveyed who are satisfied with the (absence of) litter in public places
	Ongoing development of an integrated waste strategy by maximising the remaining life of the existing landfill through a programme of waste minimisation and recycling, with diversion from landfill as high as possible before any residual waste is transported to a regional facility outside the district	Percentage of waste material diverted from landfill, measured by volume Solid waste taken to landfill per annum (tonnes produced by each resident and tourist) Solid waste taken to landfill per annum (actual tonnage)

Report on Performance

KEY: The line in each graph indicates the Councils desired trend, and for 2006 the Actual Target.





Level of Achievement

Steady progress continues to be made on the road to zero waste. When one considers the significant growth the district is currently experiencing, in terms of permanent population and visitor numbers, this shows the commitment of our community to reduce waste to landfill on a per person basis.

Satisfaction with the recycling centre remains high, and satisfaction with the absence of litter in public places has also increased.

Diversion refers to material that does not go to landfill. Recyclable material includes paper, cardboard, plastic, metal, shop goods, green waste, timber, tyres, cars, glass, and clean fill.

Cost of Service Statement: Refuse & Recycling

FOR THE YEAR ENDED 30 JUNE 2006

	2006 BUDGET \$	2006 ACTUAL \$	2005 ACTUAL \$
Operating Expenses			
<u>Refuse & Recycling</u>			
Operations	217,407	256,873	212,883
Loan Interest	7,792	7,911	8,006
Depreciation	3,918	1,551	588
	229,117	266,335	221,477
Funded by:			
User Fees & Charges	1,000	-	7,282
Development Contributions	-	3,148	-
Grant Revenue	-	-	4,444
	1,000	3,148	11,726
Operating Surplus/(Deficit)	(228,117)	(263,187)	(209,751)
Capital Expenditure			
Refuse & Recycling	-	-	-
Loan Principal	5,838	5,838	5,838
	5,838	5,838	5,838
Other Revenue			
General Rates	237,537	237,924	208,865
Transfer from/(to) Aftercare	(7,500)	29,550	6,136
Reserves			
Loans	-	-	-
	230,037	267,474	215,001
Balance (Depreciation)	(3,918)	(1,551)	(588)

Capital Expenditure: Acquisition of Assets

No significant assets were purchased, replaced or sold by Council, as the management of assets relating to this activity is undertaken by Innovative Waste Kaikoura Ltd. Council does, however, guarantee loans to Innovative Waste to enable capital expenditure to take place. This is consistent with provisions made in the Community Plan.