

Refuse & Recycling

Goal

To progressively increase the volumes of solid waste diverted from being landfilled in the district, with a view to ultimately achieving zero waste to landfill.

Nature and Scope of Activity

Kaikoura's Resource Recycling Centre is the culmination of Council's Zero Waste Policy. Where previously there existed only a dump, the facility now hosts a composting facility for green waste and organics, a demonstration worm farm, a recycling centre able to cater for anything recyclable, a hazardous waste disposal facility, and a training centre where courses are held for students to learn about our zero waste strategies and gain hands on experience. Innovative Waste Kaikoura have developed other projects outside their core tasks, another being Trees for Travellers where native trees are sold to tourists and the income is put back into resource recovery.

The resource consent for operating the landfill still has 30 years to run, however even though the recycling facility boasts a 62.4% diversion of waste materials from landfill, the growth of the district is placing increasing pressure on the capacity of the landfill, and Council is being forced to consider either developing a new facility or joining the Kate Valley regional landfill either as a joint venture shareholder, or by sending residual waste to the landfill and pay per tonne of waste disposed of, this will most likely happen within the next seven years. The financial implications of this are enormous, and Council is determined to continue at the existing site for as long as it is able.

Because of the increased volume of waste with the growth of the district, resources put into this activity will need to match the growth even just to maintain the current diversion rate from landfill. Innovative Waste Kaikoura's target is to increase the diversion rate by 5% per year and achieve the district's zero waste to landfill by 2015.

Effects on the Community

The Resource Recycling Centre has, since its instigation, had significant social and economic benefits for the community. Innovative Waste Kaikoura has a policy of only employing people from the WINZ register, and in the last five years has employed and stair-cased over 20 people, 14 of which remain as core staff.

Innovative Waste Kaikoura Ltd is leading the way to zero waste, and is receiving international recognition for its success. The weekly recycling pickup is a free service widely used by the community, and construction companies are contacted to encourage recycling their demolition and construction materials wherever possible. All of this been achieved at the same cost as conventional landfilling.

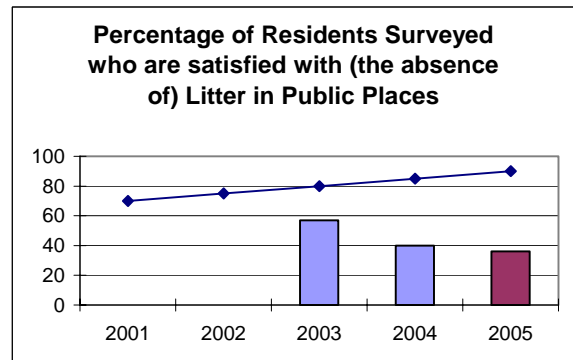
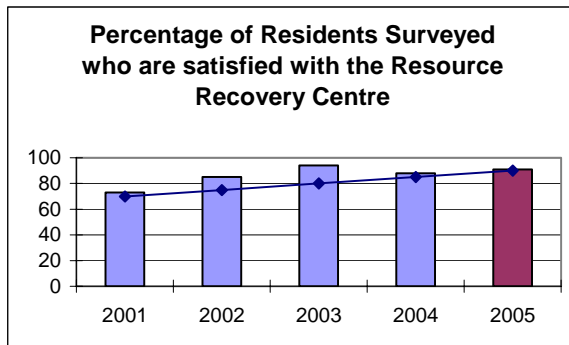
Community Outcomes

The following table highlights how Refuse & Recycling contributes to the achievement of Community Outcomes.

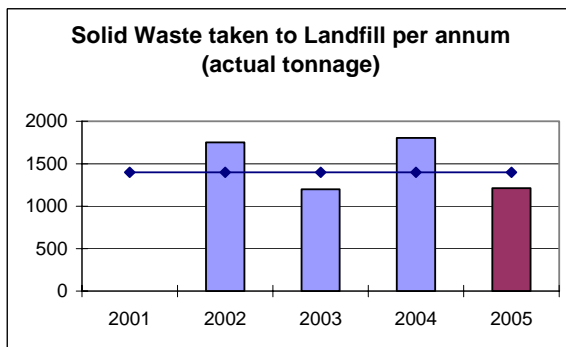
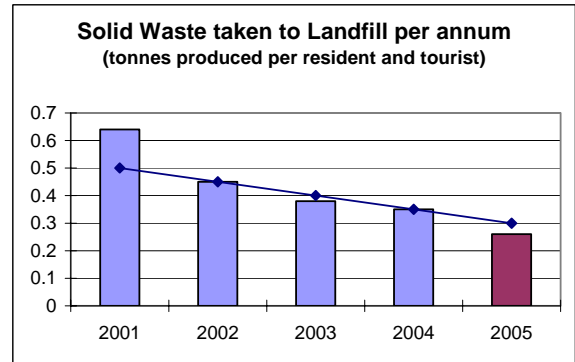
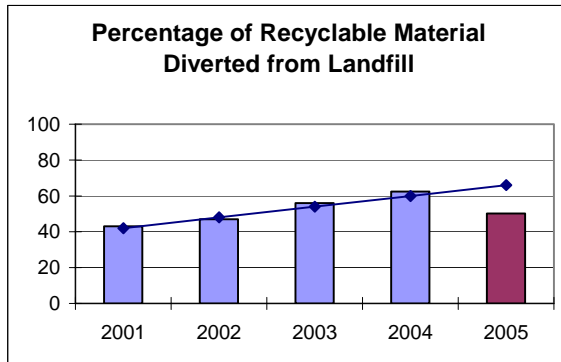
Community Outcome	How the Refuse & Recycling Activity Contributes	Performance Measure
Sustainable Development	By providing adequate infrastructure and services, appropriately funded, to meet future development needs	Percentage of residents surveyed who are satisfied with the Resource Recovery Centre
Environmental Protection and Enhancement	By preserving the scenic and amenity values that ensure a natural and tranquil Kaikoura,	Percentage of residents surveyed who are satisfied with the (absence of) litter in public places
	Ongoing development of an integrated waste strategy by maximising the remaining life of the existing landfill through a programme of waste minimisation and recycling, with diversion from landfill as high as possible before any residual waste is transported to a regional facility outside the district	Percentage of waste material diverted from landfill, measured by volume Solid waste taken to landfill per annum (tonnes produced by each resident and tourist) Solid waste taken to landfill per annum (actual tonnage)

Report on Performance

KEY: The line in each graph indicates the Councils desired trend, and for 2005 the Actual Target.



Not asked in 2001/2002 survey.



Not recorded in 2001.

Level of Achievement

The actual tonnage of solid waste being landfilled has decreased in 2005, and the tonnage being landfilled on a per person basis has also decreased. Overall residents are satisfied with the recycling centre, although less people are satisfied with the absence of litter in public places.

The percentage of waste diverted from landfill is recorded as having decreased quite significantly in 2005. This is due to a couple of factors.

- 1) Introduction of the weighbridge as the means of measurement (previously measured by volume not weight).
- 2) 180 tonnes of waste from a demolition site was dumped at IWK toward the end of the financial year.

Diversion refers to material that does not go to landfill. Recyclable material includes paper, cardboard, plastic, metal, shop goods, green waste, timber, tyres, cars, glass, and clean fill.

Cost of Service Statement: Refuse & Recycling

FOR THE YEAR ENDED 30 JUNE 2005

	2005 BUDGET \$	2005 ACTUAL \$	2004 ACTUAL \$
Operating Expenses			
<u>Refuse & Recycling</u>			
Operations	184,036	212,883	186,423
Loan Interest	8,368	8,006	9,190
Depreciation	3,134	588	2,421
	195,538	221,477	198,034
Funded by:			
User Fees & Charges	1,000	7,282	5
Grant Revenue	-	4,444	-
	1,000	11,726	5
Operating Surplus/(Deficit)	(194,538)	(209,751)	(198,029)
Capital Expenditure			
Refuse & Recycling	-	-	2,400
Loan Principal	5,838	5,838	5,034
	5,838	5,838	7,434
Other Revenue			
General Rates	204,742	208,865	213,840
Transfer from/(to) Aftercare	(7,500)	6,136	(10,798)
Reserves			
Loans	-	-	-
	197,242	215,001	203,042
Balance	(3,134)	(588)	(2,421)

Capital Expenditure: Acquisition of Assets

No significant assets were purchased, replaced or sold by Council, as the management of assets relating to this activity is undertaken by Innovative Waste Kaikoura Ltd. Council does, however, guarantee loans to Innovative Waste to enable capital expenditure to take place. This is consistent with provisions made in the Community Plan.