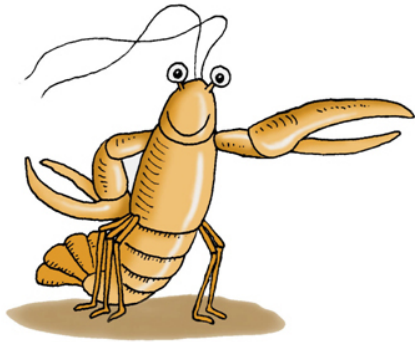


Mini Landfill



Items buried: 1. 2. 3. 4. 5. 6.

Identify the changes in each item over the next four weeks in the chart below.

Item 1. 2. 3. 4. 5. 6.	Item 1. 2. 3. 4. 5. 6.
Item 1. 2. 3. 4. 5. 6.	Item 1. 2. 3. 4. 5. 6.

Why do you think some items decomposed more rapidly than others?

What does this study tell you about the types of items we put in landfills?

Are there items that should never go into landfills? If yes, list some below.
