



Kaikoura Clues

tips for builders, developers & renovators

Kaikoura is the smallest district on mainland New Zealand and the community are committed to ensuring the environment is managed carefully for future generations.

If you are renovating, considering building or subdividing please take a moment to read through this *Kaikoura Clues* and gather some practical ideas to save money and also reduce your impact on the environment.

Kaikoura Clues has tips on:

- Low maintenance gardening,
- Conservation covenants to reduce your rates,
- Reducing, recycling and reusing your waste,
- Tapping into the local Waste Exchange,
- Work with our local demolition team,
- Save energy, money and the environment,
- Calculate your households carbon footprint
- Solar power options
- Water saving tips

Comments or questions?

If you would like further information or have any comments, please contact the
Kaikoura District Council
Phone (03) 319 5026
e-mail:kdc@kaikoura.govt.nz
www.kaikoura.govt.nz



Plant a low maintenance & beautiful garden

Planting native plants will improve the local environment for native birds and will eventually reduce the dominance of those pesky weeds! Refer to www.kaikoura.govt.nz for a list of native plants local to the Kaikoura area - planting these will reduce the need for water during summer and still give your garden great colours and attract bird life.

Ensure you use a dripper system to water areas that do need it (sprinklers tend to be the least efficient watering system!) Make sure you aren't watering the garden path.

Phone Council for further information Ph (03) 319 5026, e-mail: kdc@kaikoura.govt.nz



Covenants

Covenants legally protect your piece of paradise for the years to come. Agencies such as the Queen Elizabeth II National Trust can assist you in protecting sections of your property no matter how small- it just depends on the natural values. Values such as landscapes, streams, wetlands, coastlines, cultural & archaeological sites, forests, lakes, tussock grasslands and geological features are all worthy of protection.

Covenanted pieces of land are entitled to rates relief through Council and there are regular funding opportunities to assist in undertaking protective and restoration works such as fencing, pest and weed control. Phone Council for further information Ph (03) 319 5026, e-mail: kdc@kaikoura.govt.nz



Recycling, reuse & recycle

Kaikoura's waste management focuses on reduction, recycling and reuse! An extensive kerbside recycling collection is available each week for residents and everyone is responsible for disposing of their own refuse at the landfill, Scarborough St.

Grab a free fridge magnet from Council offices to pop on your fridge to ensure your guests help you reduce household waste.

- Each year every person in New Zealand produces about 83 kilograms of waste from excess packaging alone!
- About 40% of every households refuse is made up of kitchen scraps that could be used in your garden as compost or to feed the worm farm!



Remember the more you recycle the less you pay to dispose of waste in the landfill!

Phone: Resource Recovery Centre: 03 319 7148, e-mail: iwk@xtra.co.nz

Tips to reduce your household waste

- Shop at your local butcher & baker- where the produce is fresh and packaging minimal!
- Say NO to plastic bags - remember to take your own bags shopping!
- Recycle carefully
- Use cloth nappies
- Feed kitchen scraps to a worm farm or compost bin

Waste Exchange

The material exchange scheme can help your businesses, large or small, find markets for the things you currently landfill or burn. The waste exchange will save your company money through less costs for disposing of waste and paying less for buying the materials.

The name of your business will remain confidential; with each waste material given a coded number that needs to be quoted when making enquires and our trained personnel will work on your behalf to establish a solution for the materials you require or have available.

Joining is FOC- you simply contact Innovative Waste Kaikoura and list the materials you want to buy or wish to dispose of. All details can be kept strictly confidential.

Ph (03) 319 7148, e-mail: iwk@innovativewaste.org

Reclamation & demolition (R&D)

Kaikoura has its own R&D team who reuse as much of your construction and demolition material as possible - saving you money and enabling others to reuse the materials you don't want!

The R&D team have skips that you can use on site, which will prevent up to 55% of waste from going to landfill - saving money and resources. The team sort the material from the skips at the Resource Recovery Centre, allowing it to be reused.

If you need a building removed, the team will come and remove it for you!



Prioritise your choice of builders through their building skills, cost and ability to reduce waste.

R&D team Phone (03) 319 7148 e-mail: iwk@innovativewaste.org
www.rebri.org.nz/links/guidelines/EG-Demolition.pdf

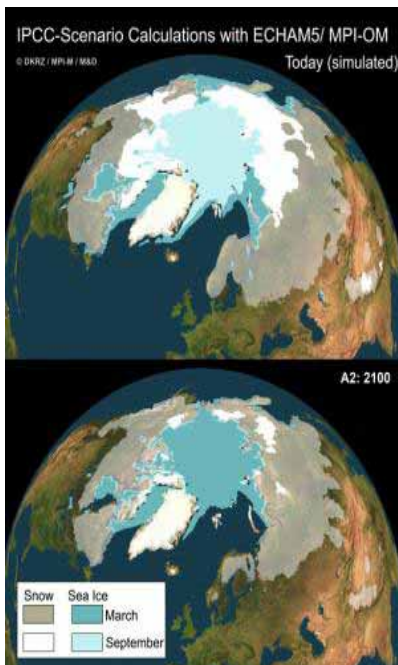
Save energy, money & our climate

Climate change is one of the biggest challenges facing the world today- resulting from inefficient energy use! Lessen your impact by reducing the amount of energy wasted:

- Spend a little on insulation and save 30% off your electricity bill each year.
- Site new buildings so the sun warms living areas, especially for winter months!
- Many appliances use up to 40% of their annual energy consumption on standby. Switch off dishwashers and microwaves after use!
- Placing 10% of your roof area with sky lights will reduce the need for lighting during the day!
- Use a heat pump in winter and save up to \$500 per year.
- Double-glaze windows – do the south-facing windows first.

Calculate your carbon footprint quickly and simply online

<http://www.carbonzero.co.nz/calculat>



Cultural Care

DID YOU KNOW THE LARGEST INTACT MOA EGG WAS FOUND IN KAIKOURA?



The Kaikoura District has a great deal of Maori and European history, of special significance to all New Zealanders. Many places, buildings, features and trees within the District have historical, cultural, spiritual, scientific or other special significance.



We each need to make an effort to retain the heritage of the past, not only for ourselves but also for those generations yet to come.

If you are developing, building, excavating or subdividing, please contact Council planning staff BEFORE any works take place to clarify if extra precautions need to be taken.

Please phone 03 319 5026 and further information is available from:
www.kaikoura.govt.nz/our_services/regulatory_services/statutory_planning/heritage.htm

Water savings

The drought which is currently gripping large parts of Australia is the most severe since records began- New Zealanders need to learn from our mates across the ditch- and reduce our water use.

- Use gutters to fill a rainwater tank for gardening, laundry and bathrooms.
- Composting toilets do not require water, can be odourless and simple to maintain.
- Place a brick in the toilet cistern - this will save 2 litres per flush!

http://www.consumerbuild.org.nz/publish/maintenance/money-saving_tips.php

Further information available from Council

Pop in and grab a copy of one of the following brochures or give us a call and we can post them out!

- Getting Warmer by Degrees- A homeowner's guide to energy savings EECA
- Saving Water in your house and garden
- Flammability of Native Plant Species – A guide to reducing fire hazard around your home- National Rural Fire Authority
- Plant & Animal Pests of the Canterbury Region – Environment Canterbury
- Proposed District Plan Appendix F – Landscape, Amenity & Energy Efficiency Guidelines
- Proposed District Plan Appendix G – Waste Management Protocol
- Guide for Drought Tolerant Landscaping in Kaikoura
- Easy Guide to Reducing Construction Waste - BRANZ
- Easy guide to Eco-Building - BRANZ
- The Septic Tank Ten Commandments –extract from Burkes & Minnis' book, Onsite Wastewater Treatment Systems

