

**WORKS AND SERVICES COMMITTEE MEETING HELD ON  
WEDNESDAY 18 FEBRUARY 2015 AT MEMORIAL HALL SUPPER  
ROOM, ESPLANADE, KAIKOURA.**

**AGENDA**

**1. Apologies**

**2. Matters of Importance to be raised as Urgent Business.**

**3. Reports:**

- Operations and Maintenance Manager's Report *page 1*
- Budget Report *page 7*

**4. Urgent Business**

**5. Works & Services Public Excluded Session**

***Moved, seconded that the public be excluded from the following parts of the proceedings of this meeting, namely***

***a. Water and Wastewater Services***

***The general subject matter to be considered while the public is excluded, the reason for passing this resolution in relation to each matter, and the specific grounds under Section 48(1) and 7(2)(i) of the Local Government Information and Meetings Act 1987 for the passing of this resolution are as follows:***

General subject of each to be considered	Reason for passing this resolution in relation to each matter	Grounds of the Act under which this resolution is made
Water and Wastewater Services	The exclusion of the public from the whole or the relevant part of the proceedings of the meeting is necessary to enable the Local Authority to protect information where the making available of that information would likely unreasonably to prejudice the commercial position of the person who supplied the information or who is the subject of the information.	Section 48(1)(a) and 7(2)(b)(ii)

# OPERATIONS AND MAINTENANCE MANAGER'S REPORT

## 1.0 WATER SUPPLY

### 1.1 Urban Water

#### Operations – Kaikoura Urban Supply

This facility operated satisfactorily during the reporting month. The extreme temperatures at the end of January have seen the reservoir affected by the high levels of irrigation.

Expenditure on operations and maintenance is running above budget levels, some work is now being deferred.

Significant Work planned for 2015 includes:

- South Bay pipe replacement (this project is reliant on an archaeological consent and a cultural impact report and approval. There is some chance that this project will be delayed and have to be completed in 2015/16)

#### Water Demand

Table 1 below shows the water demand for the reporting month measured from the Mackle's bore while Figure 1 shows the yearly cumulative water demand since 2009.

<b>Water Demand (m<sup>3</sup>/day)</b>				
	<b>Min</b>	<b>Avg</b>	<b>Max</b>	<b>Total Demand</b>
<b>July 2013</b>	1157	1826	2626	58,416
<b>August 2013</b>	1710	2001	2668	62,021
<b>September 2013</b>	1380	2272	2668	68,151
<b>October 2013</b>	2093	2607	3426	78,199
<b>November 2013</b>	1585	2332	2976	69,961
<b>December 2013</b>	2633	3149	4064	97,630
<b>January 2014</b>	1928	3002	3667	93,052
<b>February 2014</b>	2712	3339	3968	93,494
<b>March 2014</b>	1534	2510	3671	77,796
<b>April 2014</b>	1436	2609	3723	78,257
<b>May 2014</b>	1316	2639	3874	81,834
<b>June 2014</b>	2072	2710	3403	81,305
<b>July 2014</b>	1629	2166	2681	67,158
<b>August 2014</b>	1791	2271	2989	70,415
<b>September 2014</b>	1686	2546	3374	76,395
<b>October 2014</b>	1686	2252	3582	88,708
<b>November 2014</b>	2246	3259	4670	97,780
<b>December 2014</b>	2403	3444	4556	106,765
<b>January 2015</b>	3169	4327	5296	134,124

Table 1: Water Demand for reporting period

There was a 44% increase in water use compared to the same time last year. High usage is being attributed to the hot weather over the summer. The overall usage is the highest since 2010/11.

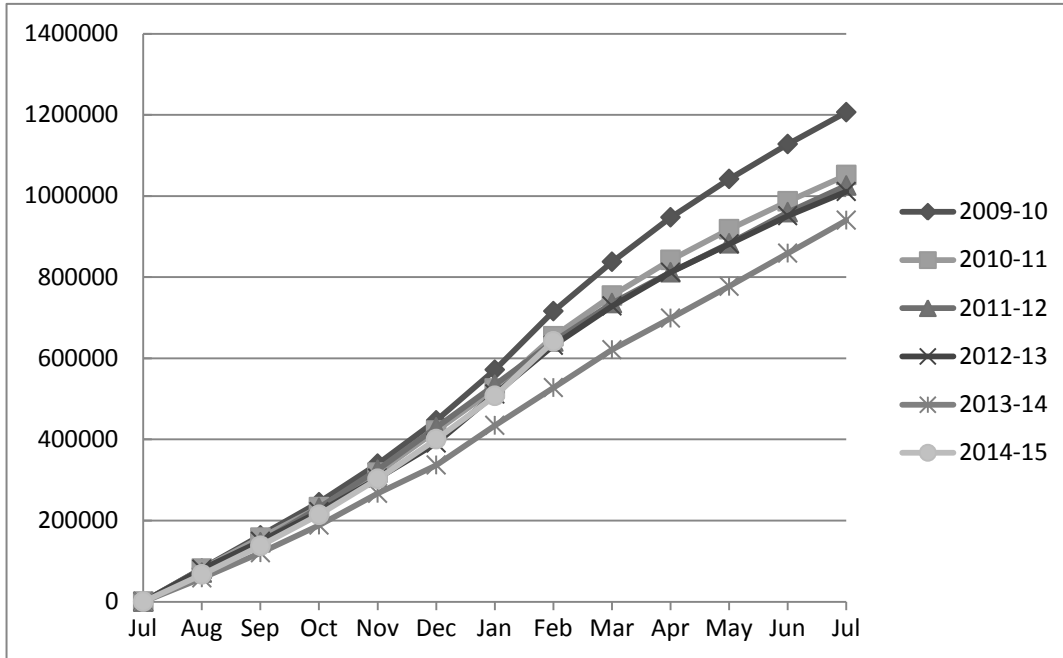


Figure 2: Cumulative Water Demand in cubic metres

### Operations – Suburban Supply

High demand due to irrigation and low water levels resulted in sand being drawn into the system. On separate occasions it also resulted in loss of water to users at the higher elevations on the scheme.

Satisfactory solutions include sand filters, further controls on the irrigation and special valves to ensure consumers receive priority over irrigators.

### 1.2 Kincaid Water Supply

High demand did see a reduction in levels of storage in the reservoir. There were no other issues with this system during the reporting month.

A quotation was received for the new tanks on Topline Road. This will see this year's renewals budget of \$15,000 exceeded by \$20,000. There are funds in reserves that will allow the project to proceed.

The proposal to install the tanks will be put to the Kincaid Water Supply Committee.

### 1.3 Oaro Water Supply

Water restrictions on irrigating were imposed as a result of the high demand. They will remain in force until the end of March.

#### 1.4 Fernleigh Water Supply

There were no issues with this system during the reporting month.

#### 1.5 Ocean Ridge Water Supply

There were no issues with this system during the reporting month.

#### 1.6 Peketa Water Supply

There were no issues with this system during the reporting month.

#### 1.7 East Coast Water Supply

There were no issues with this system during the reporting month.

### 2.0 SEWER SYSTEM

<i>Sewage flows (m3/day)</i>			
	<i>avg</i>	<i>Max*</i>	<i>Total Flow**</i>
<i>July 2013</i>	967	2012	30,255
<i>August 2013</i>	857	1771	25,723
<i>September 2013</i>	857	2005	25,710
<i>October 2013</i>	1149	2931	34,484
<i>November 2013</i>	733	1093	22,000
<i>December 2013</i>	775	2238	32,928
<i>January 2014</i>	868	1839	32,823
<i>February 2014</i>	957	1139	26,802
<i>March 2014</i>	1095	2357	33,938
<i>April 2014</i>	1642	2516	49,247
<i>May 2014</i>	1004	1927	31,141
<i>June 2014</i>	1028	2500	30,830
<i>July 2014</i>	857	2500	26,571
<i>August 2014</i>	677	860	20,975
<i>September 2014</i>	668	1233	20,052
<i>October 2014</i>	775	1321	24,025
<i>November 2014</i>	888	1537	26,641
<i>December 2014</i>	986	1266	30,557
<i>January 2015</i>	1029	1318	31,901

**Table 3 : Sewage generated for reporting period**

\*The asterisk figure represents daily flows during heavy rainfall events.

\*\*The double asterisk figure has not been adjusted to reflect inflows from storm-water.

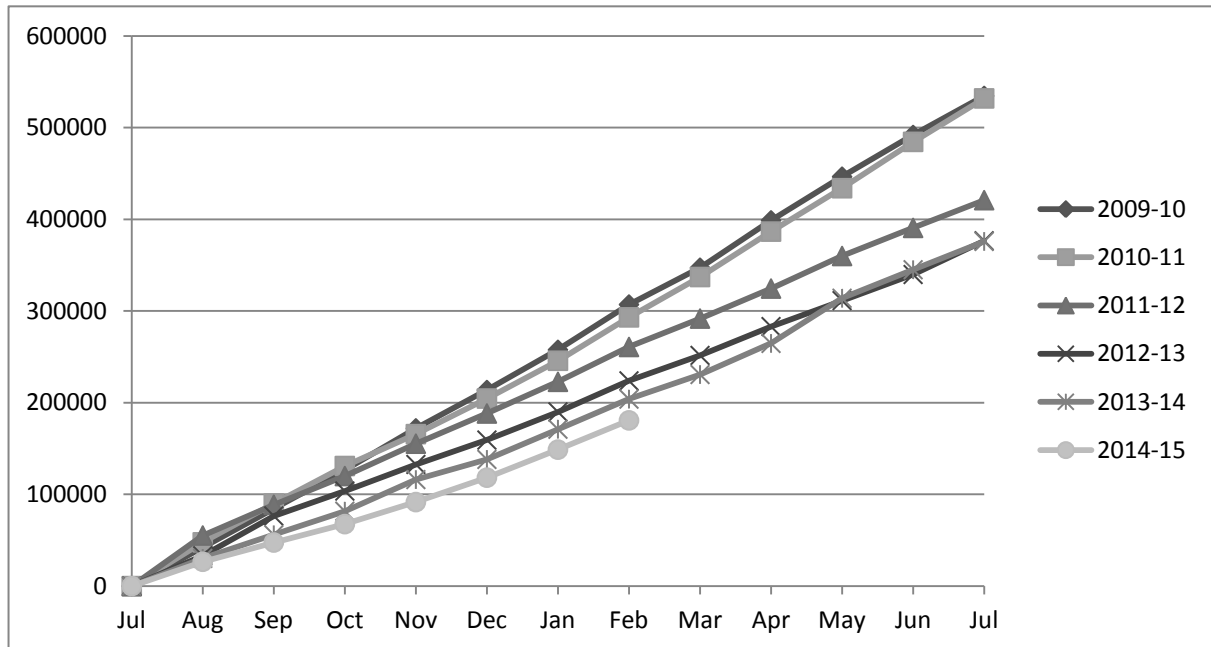


Figure 2: Cumulative Sewerage Discharge from Oxidation Ponds in cubic metres

One of the pumps at the Totara Lane Pump Station failed and is to be replaced.

The sewer extension to collect leachate and sewerage at the landfill site has been installed to the landfill boundary. Work on the internal reticulation is proceeding.

### 3.0 STORMWATER

The consent for the Kaikoura Urban Area is still being processed by Environment Canterbury.

### 4.0 PARKS AND RESERVES

The parks and reserves were satisfactorily maintained during the reporting month. The retaining wall on Tom's Track is complete.

### 5.0 BUILDINGS

The painting of the men's toilets in the Memorial Hall has been completed.

Significant Work planned for 2015 include:

- Disabled access to the Hall
- Install new door on men's disabled toilet

After completion of the disabled access to the women's toilets there is \$6,000 for remaining work. Two options are available for disabled access to the hall and ultimately both should be completed. The options are access to the front of the building \$8,590 and access to the rear of the building \$3,975.

The preferred option is access to the front of the building as this gives a similar level of accessibility to others using the front of the building.



Fig 1 Access to front of Building



Fig 2 Access to rear of Building

***Recommendation: That the installation of disabled access to the Memorial Hall be via the front of the building at an estimated cost of \$8,600.***

## **6.0 AIRPORT**

No issues have occurred at the airport.

## **7.0 SWIMMING POOL**

Part of the swimming pool fence has been removed and replaced with gates. Investigation into providing a ramp from the street is occurring. The meter into the pool has been repaired.

## **8.0 PUBLIC TOILETS**

From inspections carried out, the toilets were found to be in very good condition.

## **9.0 ROADING**

Work has occurred on Killarney Street to dewater the road formation.

Significant work planned for 2015:

- Replacement of mercury vapour lights

The contract for 818 metres of kerb and channel on Torquay, Ramsgate and Margate Street, the entrance to the Top 10 Holiday Park and in front of the cemetery has been let to Downers.

## **10.0 FOOTPATHS**

No work has been undertaken in October.

***Recommendation: That this report be received.***

Author: Operations and Maintenance Manager  
Endorsed by the Chief Executive Officer

## Works and Services Budget Report

