

# Draft Pre-event Recovery Plan for Canterbury



# Key messages for today

The CDEM role in recovery extends beyond Council BAU functions.

- It includes coordination of multiple agencies who all have a role in recovery.

Recovery is long, complex, expensive and involves lots of people.

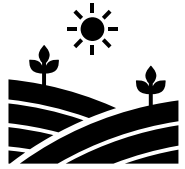
- Supporting people and communities must be at the heart of recovery.

We are not prepared for recovery.

- CDEM is response focused. Recovery roles, structures, funding, personnel, etc are not clear.
- “Building the plane while flying it” is not good enough.
- Prepare for recovery now, not after the event.



# Overview of today



Context of recovery



Key components of the plan



Discussion



# Context

- Part of CDEM – reduction, readiness, response, recovery

Draft plan part of getting better prepared for recovery

- Definition from CDEM Act 2002

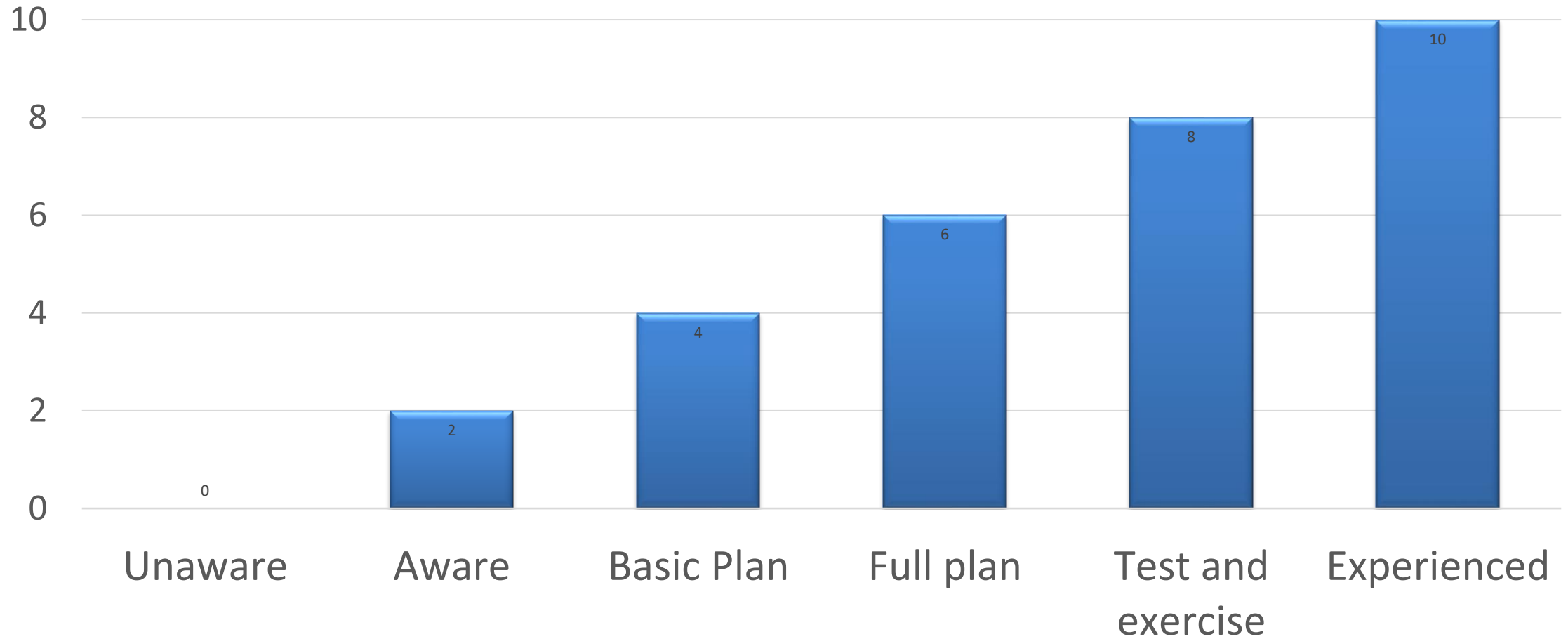
*“the co-ordinated efforts and processes used to bring about the immediate, medium-term and long-term holistic regeneration and enhancement of a community following an emergency.”*

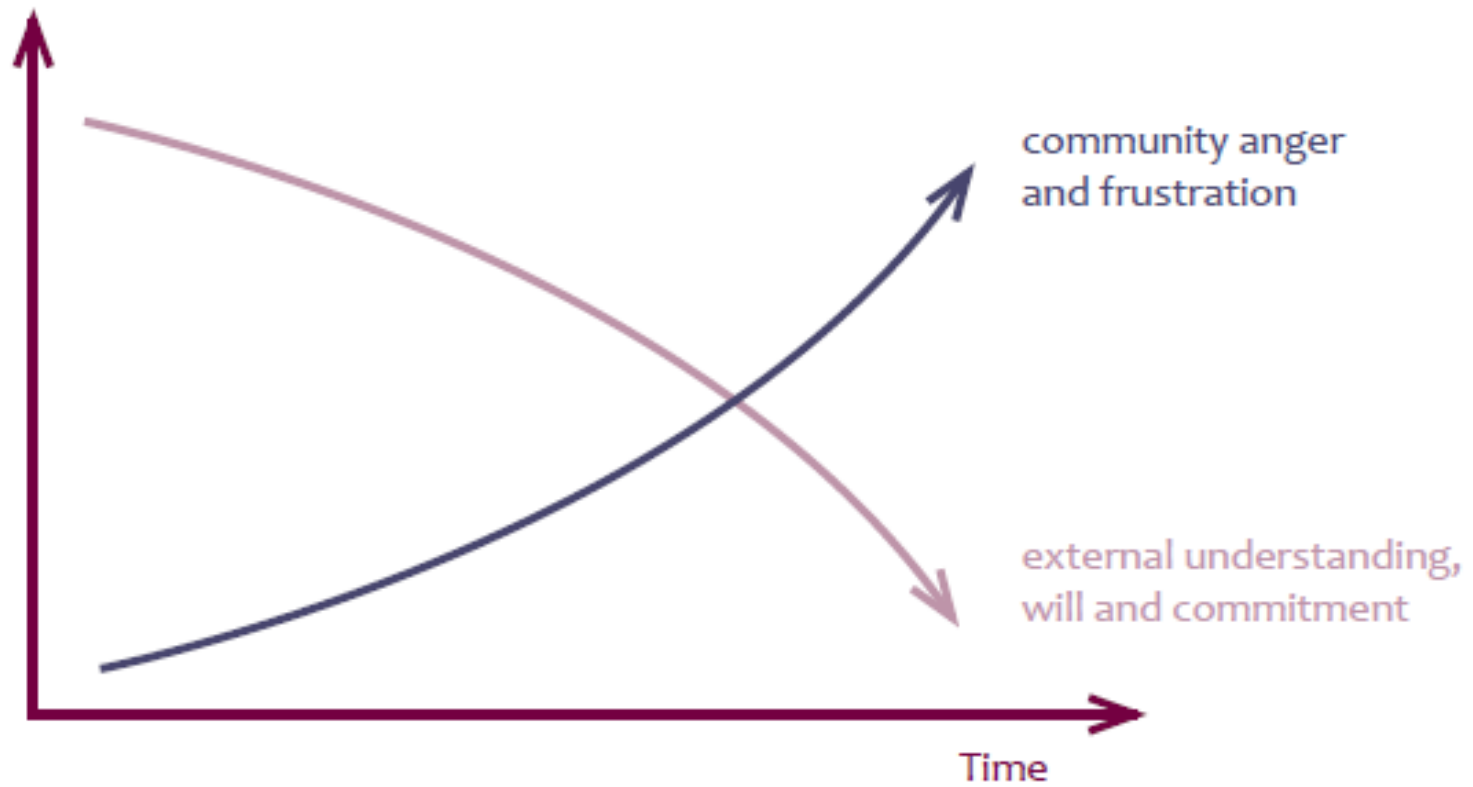
- CDEM role – Leadership and coordination

Different from restoring council services



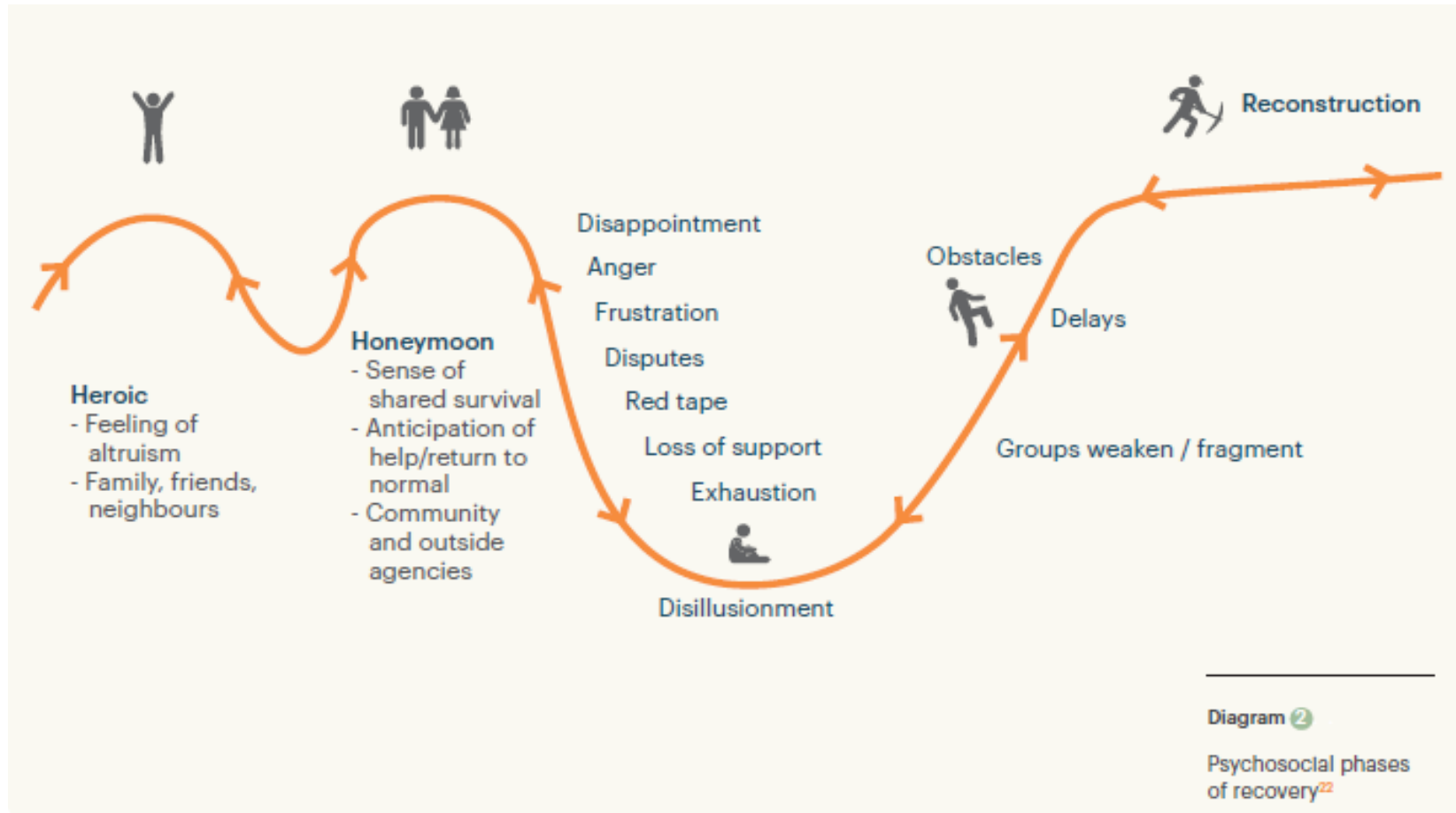
# Recovery Maturity





Source: Leading in Recovery, NZ Red Cross





Source: Australian Emergency Management Institute Community, Recovery Handbook 2.





# The Balancing Act



On the one hand, you need to:

- Act quickly
- Get things done
- Be responsive
- Be pragmatic
- Make strong decisions
- Make things clearer and simpler
- Grab opportunities and take risks

On the other hand, you also need to:

- Understand the problem
- Collaborate with others
- Think ahead
- Be empathetic
- Make quality decisions
- Deal with complexity
- Avoid causing bigger problems

Canterbury Earthquake Recovery Authority (CERA). “Walking the Recovery Tightrope”, April 2016





# The Plan

Draft plan is a first step

Overall outcome: Ready for Recovery

- Shared understanding and expectations across recovery partners
- Commitment to roles and responsibilities
- People and funding available (at least to get started)
- Prioritised programme to address gaps
- Supported by training and exercises

This plan is for a large or catastrophic event



# Things to consider

Coordination is a core function of emergency management

Most of recovery occurs outside of CDEM

Relies on goodwill rather than formal powers

Understanding of roles and responsibilities is essential

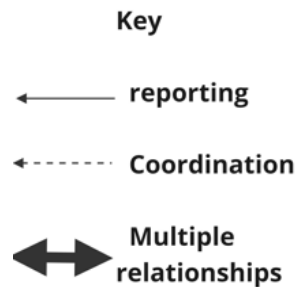
Without it time and resources are wasted

CDEM Group governance sits with Joint Committee

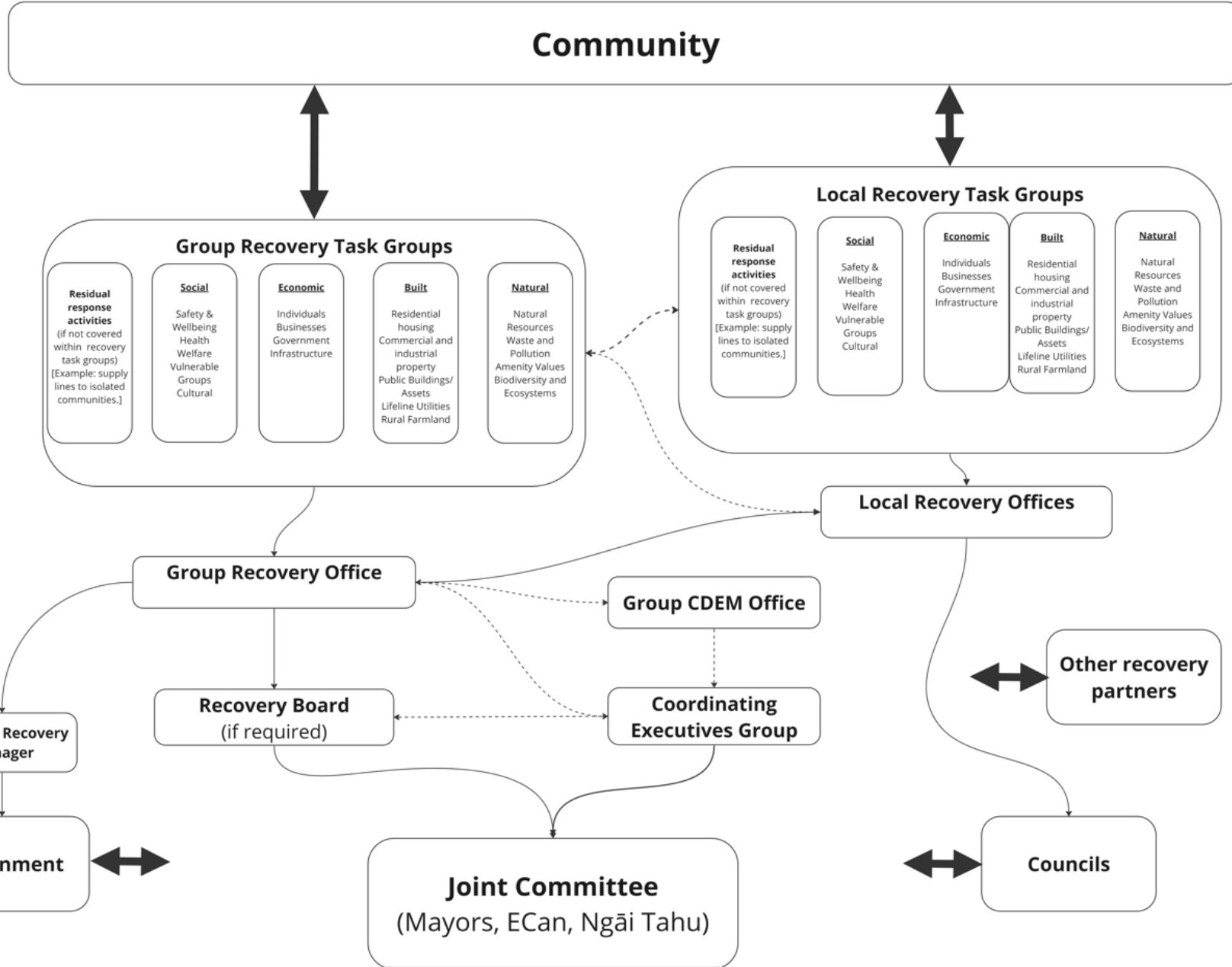
For a large event, a recovery board is proposed

Local governance sits with each Council





Recovery Task Groups are indicative only and may vary depending on the event.



# Local and Group Office

## Local

- Leading community engagement.
- Coordination of local recovery.
- Advocate and connect to regional and national initiatives.
- Some operational activity (such as welfare).
- Councils restore own services.

## Group

- Coordination at regional level.
- Advocacy and funding bids to Government.
- Policy, advice or tasks that requires consistent regional approach.
- Supporting local activities.



# Recovery Board

Proposed for large event only (multiple districts severely affected)

## Role

- Governance: strategy, advocacy, resourcing, risk management

## Why

- Expertise, trust & confidence, diversity, flexibility

## Membership

- To be decided - partly event specific



# Recovery Task Groups

## Role

- Coordinate, advocate, connect, problem solve.

## Membership

- Government (local, regional, national), Iwi, NGOs, private sector

Who leads?

What support is required?



# Ngāi Tahu and Māori Recovery Rōpū

## Role

- To determine and enable representation in the overall structure
- Representatives to be embedded in all other components

## Membership

- To be determined by Ngāi Tahu and Māori





# Next steps

Further engagement / hui with organisations and as groups

Feedback by 1 December

Revised version early 2024.

Contact: [richard.ball@cdemcanterbury.govt.nz](mailto:richard.ball@cdemcanterbury.govt.nz)

